

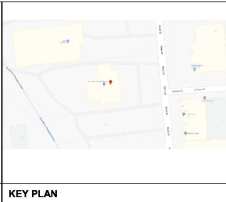
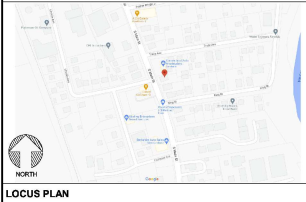
TORRINGTON SAVINGS BANK

TORRINGTON SAVINGS BANK

635 MAIN ST, TORRINGTON, CT 06790



ISSUED FOR: BID & PERMIT, 7.7.2023



PROJECT DESCRIPTION:

THIS PROJECT CONSISTS OF AN INTERIOR BUILD-OUT OF AN EXISTING BUILDING AT 635 MAIN ST., TORRINGTON, CT 06790. THIS BUILD-OUT CONSISTS OF A RENOVATED LOBBY AREA WITH NEW TELLER STATIONS, NEW VIEWING ROOMS, ATM, UPGRADED FRESH AND LIGHTING THROUGHOUT.

THE PROJECT CONSISTS OF THE FOLLOWING WORK:

- LIMITED LOCAL DEMOLITION ONLY AS NEEDED FOR NEW CONSTRUCTION.
- NEW INTERIOR PARTITIONS AND DOORS
- NEW FURNITURE MILLWORK
- NEW FINISHES AS SCHEDULED
- NEW CEILING AS SCHEDULED
- NEW LIGHTING AS SCHEDULED
- NEW PLUMBING AND FLOOR PENETRATIONS
- NEW ELECTRICAL DISTRIBUTION
- EXISTING TENANT SPACE (BUILDING ENVELOPE AND TENANT DEMISING WALLS)
- NEW SPECIALTY EQUIPMENT AND CONNECTIONS

OWNER / CLIENT

TORRINGTON SAVINGS BANK
126 MAIN STREET
TORRINGTON, CT 06790
T: 860.456.4440
CONTACT: MARK PERBECK
E-MAIL: markperbeck@torringtonsb.com

ARCHITECT

PHASE ZERO DESIGN
8 MILLICA STREET
BRIMSBURY, CT 06790
T: 860.384.6554
PROJECT MANAGER: CHRIS MILLARD
E-MAIL: cmillard@phasezerodesign.com

MEP ENGINEER

ACORN/DONALD/THOMAS ENGINEERS INC
244 FARMS VILLAGE ROAD
BRIMSBURY, CT 06790
T: 860.795.8800
CONTACT: W. MARK GENDRON
E-MAIL: vmg@cornthom.com

CONTRACTOR

MCC COMMERCIAL CONSTRUCTION
280 ROBERT JACOBSON WAY, 2ND FLOOR
PLAINVILLE, CT 06062
T: 860.961.0771
PROJECT MANAGER: JACKIE LARAMEE
E-MAIL: jackie.laramee@mccctg.com

SHEET INDEX

SHEET NO.	SHEET NAME	#	DATE	DESCRIPTION
G000	COVER SHEET			
G001	LOCUS PLAN, SYMBOLS & ABBREVIATIONS			
G002	GENERAL NOTES			
G003	GENERAL NOTES			
G004	CODE DATA & LEGEND PLAN			
D001	FIRST FLOOR DEMOLITION PLAN			
D011	FIRST FLOOR DEMOLITION REFLECTED CEILING PLAN			
A001	FIRST CONSTRUCTION PLAN			
A111	FIRST FLOOR REFLECTED CEILING PLAN			
A112	FURNITURE PLAN			
A113	FURNITURE PLAN			
A114	MISC. AND CEILING DETAILS			
A115	INTERIOR WALL ASSEMBLIES AND MISC. DETAILS			
A116	DOOR SCHEDULE & DOOR TYPE ELEVATIONS			
A117	INTERIOR FRAME TYPES, ELEVATIONS, FRAME SCHEDULE			
A118	INTERIOR ELEVATIONS			
A119	INTERIOR ELEVATIONS			
A120	MILLWORK PLAN			
A121	MILLWORK PLAN			
M001	FIRST FLOOR PLAN - MECHANICAL			
M002	DETAIL PLAN - MECHANICAL			
M003	SCHEDULE PLAN - MECHANICAL			
M004	SPECIFICATION PLAN - MECHANICAL			
E001	FIRST FLOOR PLAN - ELECTRICAL			
E002	ELECTRICAL DETAILS			
E003	ELECTRICAL SPECIFICATIONS			
P001	FIRST FLOOR PLAN - PLUMBING			
P002	DETAILS - PLUMBING			



ISSUED FOR: BID & PERMIT
ISSUED DATE: 7.7.2023

DRAWN BY: JB TO
CHECKED BY: CM
PROJECT NUMBER: 21953

COVER SHEET

G000

Torrington Savings Bank_635 Main Street - Bid and Permit - 7.7.2023.pdf (3) (23% of Scale); Takeoff in Active Area: All Areas; Torrington Savings Bank - Main S

<div><div>FINISH NOTES</div><div><div>1. EXPOSED SURFACES TO RECEIVE FINISHES ARE CLEAN, TRUE, AND FREE OF IRREGULARITIES. DO NOT PROCEED WITH WORK UNTIL SATISFACTORY CONDITIONS HAVE BEEN CONNECTED.</div><div>2. GENERAL CONTRACTOR TO SITE VERIFY SLAB AND USE WORKMAN MODERATE CONTACT SCENARIO PER MANUFACTURER'S RECOMMENDATIONS PRIOR TO INSTALLATION OF ANY FLOORING MATERIALS.</div><div>3. GENERAL CONTRACTOR TO PROVIDE PROTECTIVE FILM TO REMAIN AND PATCH AND REPAIR ANY AREAS DAMAGED DURING CONSTRUCTION PRIOR TO INSTALLATION OF FLOOR FINISHES.</div><div>4. CONTRACTOR TO REPAIR EXISTING SLAB COMPONENTS WHERE TRENCHES CROSSED WHICH MUST INCLUDE PATCHING OF EXISTING GASKET RETAINERS AND REPAIR GASKETS BACK INTO EXISTING SLAB PER CONTRACT DOCUMENTS DETAILS.</div><div>5. GENERAL CONTRACTOR SHALL VERIFY WALL SUBSTRATE PRIOR TO INSTALLATION OF NEW FINISH AND CONVEY ANY ISSUES BACK TO ARCH IMMEDIATELY.</div><div>6. ANY REQUEST FOR MATERIAL SUBSTITUTIONS ARE TO BE SENT TO ARCHITECT AND/OR CLIENT FOR APPROVAL PRIOR TO PURCHASE AND INSTALLATION. SAMPLES OF ALL FINISHES MUST BE SUBMITTED AND MUST BE APPROVED BY ARCHITECT & TENANT'S CONSTRUCTION MANAGER.</div><div>7. RETROFIT OR REFINISH SURFACES DAMAGED BY SUBSEQUENT WORK AS DIRECTED BY GC. THE COST OF SUCH RESTORATION WORK SHALL BE BORNE BY SUB CONTRACTOR.</div><div>8. THE GC SHALL BE RESPONSIBLE FOR THE MAINTENANCE OF ALL FINISHES IN THE SPACE PRIOR TO TURNOVER. E.G. SHALL TOUCH UP ALL CORNER BEADS, WALLS, CEILING AND FLOORING AS REQUIRED PRIOR TO TURNOVER AND ANY DAMAGE CAUSED BY OTHER TRADES INCLUDING MILLWORK VENDOR.</div><div>9. USE CLEAR CALLOUTS BETWEEN MILLWORK AND GIVE FLOOR TO CREATE A SMOOTH FINISH.</div><div>10. OVER SHALL BE INSTALLED WITH METAL CORNER BEADS, TRIM, ACCESSORIES AND MOLDINGS, ETC. AS REQUIRED FOR COMPLETION. TRIM AND BANDS READY FOR PAINT OR SELECTED FINISH, BY ORIGINAL CONTRACTOR. PATCH AND REPAIR CRACKING WALLS AS REQUIRED TO ACCEPT NEW FINISHES.</div><div>11. MOISTURE RESISTANT GYPSUM BOARD TO BE USED IN ALL "WET" AREAS.</div><div>12. IF APPLICABLE, AIR WALLS ARE TO RECEIVE THE FINISH ARE TO HAVE A GEMET BACKERBOARD.</div><div>13. GYPSUM WALL BOARD SURFACES SHALL BE WIPE WITH A DAMP CLOTH JUST PRIOR TO APPLICATION OF THE FIRST COAT OF PAINT IN ORDER TO LAY FLAT AND AIR WINDS MAY HAVE FORMED IN SANDING.</div><div>14. PAINTING RECOGNITION IS RESPONSIBLE FOR THE PROTECTION OF EXISTING OR REINSTALLATION OF EXISTING, SWITCHES, LIGHT COVERS, ETC. TO PROTECT FROM PAINTING.</div><div>15. ALL PAINTED SURFACES TO RECEIVE FINISHES (DO NOT PRIMER & CO. COATS FINISH-PART DRYDOWN WITH ADDITIONAL COATS AS REQUIRED FOR PROPER COVERAGE).</div><div>16. COAT WITH COAT OF PRIMER, ALL PAINT MATERIALS & EQUIPMENT SHALL BE CLEANED, ALL PAINT SPOTS REMOVED AND ALL AREAS THOROUGHLY CLEANED. ANY GRT OR SEVERE DAMAGE BY WORK SHALL BE CLEANED UP AND REPAIRS MADE IMMEDIATELY.</div><div>17. ALL FLOORING SUBCONTRACTORS SHALL HAVE A MINIMUM OF FIVE YEARS EXPERIENCE WORKING WITH RESPECTIVE FLOORING MATERIAL.</div><div>18. ALL FINISHED FLOORING TO BE PROTECTED BY G.C. FOLLOWING INSTALLATION.</div><div>19. U.O.N. ALL INTERIOR FINISHED WALL, FLOOR, AND CEILING, FURNISHINGS, AND MILLWORK ARE TO BE CLASS "X" FIRE-RATED AND ARE TO COMPLY WITH CODE-REQUIRED (INTERIOR FLAME SPREAD) RATINGS.</div><div>20. ALL TILE EDGES, CORNER TRANSITIONS, OR TOP CAPS SHALL BE FINISHED WITH ROLLER-JOLLY OR EQUAL STAINLESS STEEL FINISH OR EDGE PROTECTION PROFILE THROUGHOUT.</div><div>21. ANY WALL SURFACE ADJACENT TO EQUIPMENT THAT PROVIDES ADEQUATE TO HIGH LEVEL OF HEAT ARE TO BE FINISHED WITH STAINLESS STEEL PANELS. COORDINATE WITH A/C AND CLIENT PRIOR TO FABRICATION AND INSTALLATION.</div><div>22. ALL FLOOR TRANSITIONS BETWEEN DIFFERENT FLOORING MATERIALS ARE TO RECEIVE FLOOR TRANSITION STRIPS PER THE MANUFACTURER'S STANDARDS U.O.N. GENERAL CONTRACTOR TO FOLLOW A/C STANDARDS FOR ALL TRANSITION STRIPS BETWEEN MATERIALS.</div><div>23. G.C. TO PROVIDE LEVEL, FINISH THROUGHOUT SPACE U.O.N.</div></div></div> <tr><td data-bbox="417 27 784 1052"><div><div>MECHANICAL NOTES</div><div><div>1. EXCEPT WHERE SHOWN IN DIMENSIONAL DETAIL, THE LOCATIONS OF MECHANICAL EQUIPMENT, DUCTS, PIPING, AND FITTINGS ARE ONLY APPROXIMATE. THE EXACT LOCATIONS SHALL BE DETERMINED BY THE CONTRACTOR, SUBJECT TO APPROVAL BY THE ARCHITECT.</div><div>2. CONTRACTOR SHALL VERIFY SIZES AND LOCATIONS OF ALL MECHANICAL EQUIPMENT PADS AND BASES AS WELL AS POWER AND WATER OR DRAIN INSTALLATIONS WITH EQUIPMENT MANUFACTURERS BEFORE PROCEEDING WITH THE WORK. CHANGES TO ACCOMMODATE FIELD CONDITIONS OR SUBSTITUTIONS SHALL BE MADE AT NO ADDITIONAL COST.</div><div>3. MECHANICAL SUPPLY AND RETURN AIR SHAPES SHALL BE AIR TIGHT AND SEALED.</div><div>4. ALL RELEASABLE AND/OR, U.O.N. SHALL MEET THE REQUIREMENTS OF NFPA 96A 3-2-2 IN CONSTRUCTION AND INSTALLATION.</div></div><div><div>ELECTRICAL / TELEPHONE NOTES</div><div><div>1. ALL LINE AND DISCONNECT SWITCHES, SAFETY CUT-OUTS, CONTROL PANELS, FUSE BOXES, OR OTHER ELECTRICAL CONTROLS, FITTINGS, AND CONNECTIONS NOT FURNISHED AS A STANDARD PART OF THE FUTURE BY THE MANUFACTURERS TO BE FURNISHED AND INSTALLED UNDER ELECTRICAL CONTRACT. STARTING SWITCHES PROVIDED BY EQUIPMENT CONTRACTOR AND FURNISHED LOOSE AS STANDARD BY FOOD SERVICE EQUIPMENT MANUFACTURERS OTHER THAN CUSTOM FABRICATED ITEMS) TO BE MOUNTED AND WIRED COMPLETE UNDER ELECTRICAL CONTRACT.</div><div>2. ELECTRICAL SUB TO VERIFY SERVICE PROVIDED IS ADEQUATE. IF NOT, NOTIFY ARCHITECT IMMEDIATELY.</div><div>3. PRIOR TO CORING SLAB, VERIFY LOCATIONS WITH ARCHITECT AND COORDINATE LOCATIONS WITH OWNER. ALL LOCATIONS SHALL BE MARKED ON LANDSCAPE APPROVAL PRIOR TO CORING.</div><div>4. CONTRACTOR TO COORDINATE INSTALLATION OF ELECTRICAL, COMMUNICATIONS, DATA, SECURITY, AUDIO VISUAL SYSTEMS IN ACCORD WITH PROJECT PROGRAM.</div><div>5. VERIFY EQUIPMENT SPECIFICATIONS, POWER AND INSTALLATION REQUIREMENTS WITH MANUFACTURER TO ENSURE PROPER FIT AND FUNCTION.</div><div>6. VERIFY ADEQUATE REQUIREMENTS OF ELECTRICAL, TELEPHONE AND OTHER EQUIPMENT PROVIDE NON-COMBUSTIBLE BLOODING WITH WALLS AS REQUIRED FOR PROPER EQUIPMENT INSTALLATION.</div><div>7. GIVE ADEQUATE LIGHT SWITCHES AND COVER WITH A SINGLE PLATE.</div><div>8. INDICATED DIMENSIONS ARE TO THE CENTER LINE OF OUTLET OR SWITCH, OR CLUSTER OF OUTLETS OR SWITCHES, UNLESS OTHERWISE NOTED.</div><div>9. VERIFY ADEQUATE REQUIREMENTS OF ELECTRICAL, TELEPHONE AND OTHER EQUIPMENT PROVIDE NON-COMBUSTIBLE BLOODING WITH WALLS AS REQUIRED FOR PROPER EQUIPMENT INSTALLATION.</div><div>10. IDENTIFY DEDICATED OR ISOLATED GROUND ELECTRICAL OUTLETS WITH A RED DOT.</div><div>11. MOUNT STANDARD WALL OUTLETS, SWITCHES AND THERMOSTATS AT HEIGHTS REQUIRED BY TITLE 24 AND ADA REQUIREMENTS, UNLESS OTHERWISE NOTED. WHEN THERMOSTATS AND LIGHT SWITCHES OCCUR TOGETHER, INSTALL BOTH ALIGNED HORIZONTALLY WITH CENTER LINE AT 4'-2" ABOVE FINISHED FLOOR.</div><div>12. IF SPECIFICALLY INDICATED ON PLANS, ALL OUTLET AND/OR SWITCHES ARE TO BE INSTALLED AS DIMENSIONED ANY OVERCROWDINGS BETWEEN A/P AND EXISTING FIELD CONDITIONS TO BE CLARIFIED WITH THE ARCHITECT BEFORE COMMENCEMENT OF WORK.</div><div>13. ALL ELECTRICAL AND TELEPHONE WORK TO BE INSTALLED IN STRICT ACCORDANCE WITH THE REQUIREMENTS OF ALL ELECTRICAL CODES, NATIONAL BOARD OF FIRE UNDERWRITING, UTILITY COMPANIES, TELEPHONE COMPANIES, THE LANDLORD, AND ALL OTHER AUTHORITIES HAVING JURISDICTION.</div><div>14. THE GC SHALL PROVIDE ALL CUTTING AND PATCHING OF FLOORS, WALLS AND CEILING AS REQUIRED.</div><div>15. U.O.N. ALL DEVICES (TELEPHONE, DATA, ELECTRIC, SWITCH) SHALL BE WHITE WITH WHITE COVER PLATES AND ALL EXISTING OUTLETS TO REMAIN TO RECEIVE NEW WHITE DEVICES WITH WHITE COVER PLATES.</div><div>16. SURFACES WITH EXISTING OUTLETS REMOVED SHALL BE PATCHED FLUSH WITH ADJACENT WALL SURFACES.</div><div>17. PROVIDE BREAKER LOOKS FOR A.C. UNITS AND POSITIVE PHONE SYSTEMS.</div><div>18. ALL TELEPHONE OUTLETS SHALL BE PROVIDED WITH TWO (2) NULL STRONG BACK TO THE TELEPHONE EQUIPMENT.</div><div>19. U.O.N. ALL ELECTRICAL, TELEPHONE, AND DATA OUTLETS ARE TO BE MOUNTED 10" A.F.F.</div><div>20. CENTERLINE TO CENTERLINE DIMENSIONS OF ANY OUTLET PAIR OR GROUP SHALL NOT EXCEED 8".</div><div>21. ALL LIGHT FIXTURES SHALL BEAR UL LABELS.</div><div>22. EMERGENCY & EXIT LIGHTS TO BE INSTALLED ON SEPARATE CIRCUIT.</div></div></div><tr><td data-bbox="784 27 1151 1052"><div><div>PLUMBING NOTES</div><div><div>1. WHERE POSSIBLE, UTILITIES SHALL BE CONCEALED WITHIN BUILDING WALLS OR COLUMN CHASES, NOT RUN ALONG WALL FACE, DO NOT STRIKE OUT OF FLOOR AND RUN ON THE FACE OF THE WALL.</div><div>2. ANY AND ALL EXPOSED PIPING OR FITTINGS TO BE STAINLESS STEEL, CHROME PLATED OR ENCLOSED IN A CONCEALED, MOUNTED STAINLESS STEEL CHASE.</div><div>3. DRINKING FOUNTAINS ARE BY MECHANICAL TRADES. VERIFY UTILITY REQUIREMENTS WITH MECHANICAL ENGINEER.</div></div><div><div>FIRE / LIFE SAFETY NOTES</div><div><div>1. FIRE PROTECTION EQUIPMENT AND SERVICE ACCESS MUST BE PROVIDED DURING THE CONSTRUCTION PERIOD AS REQUIRED BY THE COUNTY.</div><div>2. PROVIDE A PORTABLE FIRE EXTINGUISHER WITH A RATING OF NOT LESS THAN 2-A WITH 10-PO TYPICAL, EXTANT TO ALL PORTIONS OF THE PROJECT, AND ADDITIONAL EXTINGUISHERS AS REQUIRED BY THE GOVERNMENT FIELD INSPECTOR OR BUILDING DEPARTMENT INSPECTOR.</div><div>3. ALL FIRE RATED ASSEMBLIES SHALL BE INSTALLED, LABELED, AND INSPECTED IN ACCORDANCE WITH THE APPLICABLE BUILDING CODE WHEN REQUIRED.</div><div>4. PROVIDE EXIT SIGN WITH 1-7275 OVER REQUIRED EXITS, WHERE SHOWN ON DRAWINGS, AND ADDITIONAL SIGNS AS REQUIRED BY BUILDING DEPARTMENT INSPECTOR OR FIRE DEPARTMENT FIELD INSPECTOR. CONNECT EXIT SIGNS TO EMERGENCY POWER CIRCUITS. COMPLY WITH BUILDING CODES.</div><div>5. VERIFY EXISTING LIGHTING OF ONE FOOT CANEAT AT FLOOR LEVEL, COMPLY WITH BUILDING CODES.</div><div>6. EVERY EXIT DOOR SHALL BE OPERABLE FROM THE INSIDE WITHOUT THE USE OF A KEY OR ANY SPECIAL KNOWLEDGE OR EFFORT. SPECIAL LOCKING DEVICES SHALL BE OF AN APPROVED TYPE. ALL NEW DOORS SHALL HAVE APPROVED LEVER HANDLES.</div><div>7. DOORS OPENING INTO REQUIRED 1-HOUR FIRE-RATED CORRIDORS SHALL BE PROTECTED WITH A SHOWN ON DRAWING 1-HOUR APPROVED 1-HOUR APPROVED RATING AND SHALL BE SELF-CLOSING.</div><div>8. 24-HOUR DOOR JAMBS TO BE TIGHT-FITTING, SMOKE AND DRAFT CONTROLLED.</div><div>9. EXIT DOORS SHALL SWING IN THE DIRECTION OF TRAVEL WHEN SERVING 30 OR MORE PERSONS.</div><div>10. PROVIDE FIRE DAMPERS ON DOORS WHERE AIR DUCTS PENETRATE FIRE-RATED WALLS OR CHASES.</div><div>11. STORAGE, DISPENSING OR USE OF ANY FLAMMABLE OR COMBUSTIBLE LIQUIDS, FLAMMABLE GAS AND HAZARDOUS SUBSTANCES SHALL COMPLY WITH UNIFORM FIRE CODE REGULATIONS.</div><div>12. EXTEND OR MODIFY EXISTING FIRE / LIFE SAFETY SYSTEM AS REQUIRED TO PROVIDE AN APPROVED FIRE / LIFE SAFETY SYSTEM FOR FLOORING AND ZONE APPROVAL. SUBMIT PLANS TO FIRE DEPARTMENT WITH COMPLETE DESCRIPTION OF SEQUENCE OF OPERATION, AND OBTAIN APPROVAL PRIOR TO INSTALLATION.</div><div>13. LOCATE THE CENTER OF FIRE ALARM PULSING DEVICES 4" ABOVE THE LEVEL OF THE FLOOR, WORKING PLATFORM, GROUND SURFACE OR SIDEWALK.</div><div>14. EMERGENCY WARNERS BY SIREN SHALL ACTIVATE A HORN OF WARNING THE HEARING IMPAIRED. FLASHING VIBES SHALL HAVE A FREQUENCY OF NOT MORE THAN 60 FLASHES PER MINUTE.</div><div>15. THE FIRE PROTECTION DOCUMENTATION CONTAINED WITHIN THESE DRAWINGS HAVE BEEN PREPARED TO PERFORMANCE SPECIFICATION LEVEL OF EQUIPMENT FOR GENERAL DESIGN AND FIRE PROTECTION CODE COMPLIANCE (GENERAL). THE GENERAL CONTRACTOR TO OBTAIN A LICENSED FIRE DESIGN ENGINEER FROM THE STATE OF CONNECTICUT FOR THE PROJECT. THE DESIGN ENGINEER SHALL PROVIDE A P.F. SHOP DRAWINGS, STAMP / SIGN AND P.F. SHOP DRAWINGS AND SUBMIT S&P SHOP DRAWINGS FOR PERMIT.</div></div><div><div>STRUCTURAL NOTES</div><div><div>1. THE GENERAL CONTRACTOR SHALL PROVIDE COLD-FORMED METAL FRAMING SHOP DRAWINGS STAMPED BY A PROFESSIONAL ENGINEER.</div><div>2. ENGINEERING RESPONSIBILITY: PREPARATION OF SHOP DRAWINGS, DESIGN CALCULATIONS, AND OTHER STRUCTURAL DATA BY A QUALIFIED PROFESSIONAL ENGINEER.</div><div>3. PROFESSIONAL ENGINEER QUALIFICATION: A PROFESSIONAL ENGINEER WHO IS (1) FULLY QUALIFIED TO PRACTICE IN JURISDICTION WHERE PROJECT IS LOCATED AND WHO IS EXPERIENCED IN PRACTICES OF PROFESSIONAL ENGINEERING OF THE TYPE INDICATED. ENGINEERING SERVICES ARE OFFERED AS THOSE PROVIDED FOR THE PROJECT IN DESIGN, DESIGN AND DETAIL.</div><div>4. SHOP DRAWINGS:<div><div>A. INCLUDE LAYOUT, SPACINGS, SIZES, THICKNESSES, AND TYPES OF COLD-FORMED STEEL FRAMING, FABRICATION, AND FASTENINGS AND JOINTS AND CRANE DETAILS, INCLUDING MECHANICAL FASTENINGS.</div><div>B. INDICATE REINFORCING CHANNELS, OPENING FRAMING, SUPPLEMENTAL FRAMING, STRAPPING, BRACING, BRIDGING, SPLICES, ACCESSORIES, CONNECTION DETAILS, AND ATTACHMENT TO ADJACENT WORK.</div></div></div></div></div><tr><td data-bbox="1151 27 1516 1052"><div><div>MILLWORK NOTES</div><div><div>1. REFER TO FINISH SCHEDULE FOR FINISHES.</div><div>2. MILLWORK CONTRACTOR TO SITE VERIFY ALL DIMENSIONS PRIOR TO CONSTRUCTION.</div><div>3. GENERAL CONTRACTOR SHALL REFER TO CASEWORK & COUNTERTOP SPECIFICATIONS.</div><div>4. CUSTOMER SEER OF ALL SERVING COUNTERTOPS SHALL NOT EXCEED 1/8" ABOVE FINISH FLOOR.</div><div>5. G.C. IS RESPONSIBLE FOR SUPPLYING & INSTALLING ALL SITE REQUIREMENTS (IN WALL, BLOODING, ETC.) FOR MILLWORK. COORDINATE ALL REQUIREMENTS WITH VENDORS.</div><div>6. SHOP DRAWINGS MUST BE SUBMITTED AND APPROVED BY ARCHITECT & TENANT'S CONSTRUCTION MANAGER FOR APPROVAL PRIOR TO FABRICATION WHEN REQUIRED.</div><div>7. ALL MILLWORK IS TO CONFORM TO AIA/NAAMC.A.C. PREMIUM STANDARDS.</div><div>8. G.C. IS RESPONSIBLE FOR THE COORDINATION OF THE INSTALLATION PROCESS OF ALL MILLWORK, INCLUDING TOUCH-UP OF ANY DAMAGE AND FINAL CLEANING AFTER INSTALLATION.</div><div>9. MILLWORK VENDOR TO COORDINATE WITH OTHER TRADES AND PROVIDE CONCEALED GROUNDS & OR FLOORING AS REQUIRED. PROVIDE CUTOUTS FOR OUTLETS AND EQUIPMENT AS REQUIRED. VERIFY ALL FABRICATED PARTS TO FABRICATION.</div><div>10. G.C. TO PROVIDE ADDITIONAL CUTOUTS AS REQUIRED IN VENDOR SUPPLIED MILLWORK. ALL MODIFICATIONS TO BE PERFORMED BY A QUALIFIED PART CARPENTER. ALL CUTS TO BE PLACED TO MINIMIZE VISIBILITY. NO ADDITIONAL MODIFICATION TO MILLWORK WILL BE ALLOWED WITHOUT PRIOR APPROVAL FROM TENANT'S PROJECT MANAGER.</div><div>11. ALL CUTOUTS IN UNFINISHED STONE SHALL BE SPACED A MINIMUM OF 2" APART AND/OR PER MANUFACTURER'S SPECIFICATIONS.</div><div>12. FINISHED VENEERED WOOD SHALL BE FREE FROM KNOTS, SHAKES AND OTHER DEFECTS AFFECTING OVERALL QUALITY OR APPEARANCE, & SHALL BE CAREFULLY SELECTED FOR GRAIN & COLOR FOR MATCHED VARIATIONS AT JOINTS BETWEEN VENEERS.</div><div>13. ALL MILLWORK IS TO BE LABELLED OUT IN A TRADE SHOP ONLY. NO FIELD CUTTING WILL BE ALLOWED. ALSO, NO FIELD FINISHING MORE THAN 18" FROM TOP-UPS OF MILLWORK WILL BE PERMITTED.</div><div>14. ALL MILLWORK HARDWARE TO BE FURNISHED & INSTALLED BY MILLWORK VENDOR.</div><div>15. MILLWORK VENDOR TO FINISH & INSTALL RUBBER SURFACES ON ALL DOORS AND DRAWERS.</div><div>16. WOOD BLOCKING SHALL BE PRE-TREATED IN ACCORDANCE WITH APPLICABLE CODE REQUIREMENTS. LENGTHS OF WALL BLOCKING ARE TYPICAL, ALWAYS EXTENDING TO THE MOST STUD IN EACH DIRECTION.</div><div>17. ALL SURFACES TO BE FINISHED, NO EXPOSED UNFINISHED SURFACES WILL BE ACCEPTED.</div><div>18. U.O.N. ALL INTERIOR KNEEWALL SURFACES TO RECEIVE A WHITE CLEANABLE TRIP FINISH.</div><div>19. U.O.N. ALL CABINET INTERIORS TO RECEIVE A WHITE PLASTIC LAMINATE FINISH.</div><div>20. U.O.N. THE UNDERSIDE OF ALL COUNTERTOP SUBSTRATES TO RECEIVE A WHITE PLASTIC LAMINATE FINISH.</div><div>21. MILLWORK CONTRACTOR TO INSURE ALL SPECIFIED EQUIPMENT FITS INTO COUNTER AS NOTED. CHECK ALL MANUFACTURER'S SPECIFICATIONS PRIOR TO FABRICATION.</div><div>22. MILLWORK CONTRACTOR TO INSURE COUNTER FITS BRUSH WITH SURROUNDING SITE AND FINISH.</div><div>23. COORDINATE ALL CUTOUTS A/P FINAL LOCATIONS WITH KITCHEN EQUIPMENT CONTRACTOR, TYP.</div><div>24. 1/2" X 1/2" STAINLESS STEEL CORNER GUARDS ALL EXPOSED OUTSIDE CORNERS AT MILLWORK, TYP.</div><div>25. 1/2" X 1/2" STAINLESS STEEL BOTTOM EDGING AT ALL EXPOSED LAMINATE TOP-EDGES AT MILLWORK, TYP.</div><div>26. FROD EQUIPMENT AND MILLWORK TO BE SEALED, USING APPROVED CLEAR SILICONE SEALANT, TO FLOORS, WALLS AND COUNTER TOPS AS REQUIRED.</div><div>27. ALL ENGINEERED STONE BACKSPLASHES AND COUNTERTOPS SHALL BE SEALED TO ADJACENT WALLS WITH CLEAR SILICONE SEALANT AS REQUIRED. GAPS BETWEEN ENGINEERED STONE AND WALL SURFACES SHALL NOT EXCEED 1/8" MAX.</div><div>28. ANY SUPPORT LEGS INDICATED ON THE DRAWINGS ARE SUGGESTED PLACEMENT ONLY. QUANTITY OF SUPPORT LEGS SHALL BE DETERMINED BY THE MILLWORK CONTRACTOR AND ICE.</div><div>29. INSTALLATION OF EQUIPMENT AND MILLWORK TO INCLUDE PROPER SPACING TO ALLOW FOR CLEANING.</div><div>30. ALL STAINLESS STEEL, ADJUSTABLE LEGS SHALL HAVE FEET MECHANICALLY FASTENED TO THE FLOOR.</div><div>31. MAX SPAN BETWEEN LOW WALL SUPPORTS AND/OR STAINLESS STEEL LEGS SHALL NOT EXCEED 4'-0" MAX.</div><div>32. MILLWORK CONTRACTOR TO LASE WITH ICE TO COORDINATE ADEQUATE MILLWORK REINFORCEMENT TO SUPPORT SPECIFIC EQUIPMENT AT FULL CAPACITY.</div><div>33. WHERE COUNTERTOP SUBSTRATE INTERFERES WITH UNDERCOUNTER EQUIPMENT CLEARANCES, STEEL PLAT BARS SHALL BE USED TO SUPPORT THE COUNTERTOP AS NEEDED.</div><div>34. ALL SEAM LOCATIONS SHALL BE SUPPORTED BY LOW WALL AND/OR STAINLESS STEEL LEG SUPPORT WITH STEEL CHANNEL RUNNING BACK TO MAIN LOW WALL SUPPORT.</div><div>35. AFTER WORK IS COMPLETED ALL MILLWORK AND/OR EQUIPMENT WILL BE CLEANED AND SANITIZED BEFORE OPERATIONS COMMENCE.</div><div>36. ALL PLYWOOD SUBSTRATES SHALL BE MAXIMUM GRADE PLYWOOD OR APPROVED EQUAL.</div><div>37. G.C. SHALL FURNISH AND INSTALL ACCESS PANELS IN MILLWORK WHERE INDICATED ON DRAWINGS. REQUIRED BY THE NATURE OF THE PROJECT, OR REQUIRED TO SERVICE DEVICES WITHIN THE MILLWORK. THE ACCESS PANELS SHALL BE OF SUFFICIENT SIZE SO THAT ALL EQUIPMENT WILL BE COMPLETELY SERVICEABLE. PANELS SHALL BE FINISHED TO MATCH THE SURFACE IN WHICH THEY ARE LOCATED.</div><div>38. MILLWORK CONTRACTOR TO PROVIDE ADEQUATE VENTILATION IN EQUIPMENT FOR REQUIRED EQUIPMENT. CHECK ALL MANUFACTURER'S SPECIFICATIONS PRIOR TO FABRICATION.</div><div>39. U.O.N. LOUVERED MILLWORK DOORS SHALL HAVE TOP VENTILATION SLOTS ROUTED INTO THE ENTIRE DOOR & 1/2" O.C. VENTILATION SLOTS SHALL STOP 1/8" FROM ALL SIDES. INSIDE OF SLOT TO BE PAINTED BLACK WITH WATERPROOF SEALANT.</div></div></div><tr><td data-bbox="1516 27 1593 1052"><div><div>TORRINGTON SAVINGS BANK</div><div>TORRINGTON SAVINGS BANK 635 MAIN ST., TORRINGTON, CT 06790</div></div></td></tr></td></tr></div></div></td></tr></div></td></tr>	<div><div>MECHANICAL NOTES</div><div><div>1. EXCEPT WHERE SHOWN IN DIMENSIONAL DETAIL, THE LOCATIONS OF MECHANICAL EQUIPMENT, DUCTS, PIPING, AND FITTINGS ARE ONLY APPROXIMATE. THE EXACT LOCATIONS SHALL BE DETERMINED BY THE CONTRACTOR, SUBJECT TO APPROVAL BY THE ARCHITECT.</div><div>2. CONTRACTOR SHALL VERIFY SIZES AND LOCATIONS OF ALL MECHANICAL EQUIPMENT PADS AND BASES AS WELL AS POWER AND WATER OR DRAIN INSTALLATIONS WITH EQUIPMENT MANUFACTURERS BEFORE PROCEEDING WITH THE WORK. CHANGES TO ACCOMMODATE FIELD CONDITIONS OR SUBSTITUTIONS SHALL BE MADE AT NO ADDITIONAL COST.</div><div>3. MECHANICAL SUPPLY AND RETURN AIR SHAPES SHALL BE AIR TIGHT AND SEALED.</div><div>4. ALL RELEASABLE AND/OR, U.O.N. SHALL MEET THE REQUIREMENTS OF NFPA 96A 3-2-2 IN CONSTRUCTION AND INSTALLATION.</div></div><div><div>ELECTRICAL / TELEPHONE NOTES</div><div><div>1. ALL LINE AND DISCONNECT SWITCHES, SAFETY CUT-OUTS, CONTROL PANELS, FUSE BOXES, OR OTHER ELECTRICAL CONTROLS, FITTINGS, AND CONNECTIONS NOT FURNISHED AS A STANDARD PART OF THE FUTURE BY THE MANUFACTURERS TO BE FURNISHED AND INSTALLED UNDER ELECTRICAL CONTRACT. STARTING SWITCHES PROVIDED BY EQUIPMENT CONTRACTOR AND FURNISHED LOOSE AS STANDARD BY FOOD SERVICE EQUIPMENT MANUFACTURERS OTHER THAN CUSTOM FABRICATED ITEMS) TO BE MOUNTED AND WIRED COMPLETE UNDER ELECTRICAL CONTRACT.</div><div>2. ELECTRICAL SUB TO VERIFY SERVICE PROVIDED IS ADEQUATE. IF NOT, NOTIFY ARCHITECT IMMEDIATELY.</div><div>3. PRIOR TO CORING SLAB, VERIFY LOCATIONS WITH ARCHITECT AND COORDINATE LOCATIONS WITH OWNER. ALL LOCATIONS SHALL BE MARKED ON LANDSCAPE APPROVAL PRIOR TO CORING.</div><div>4. CONTRACTOR TO COORDINATE INSTALLATION OF ELECTRICAL, COMMUNICATIONS, DATA, SECURITY, AUDIO VISUAL SYSTEMS IN ACCORD WITH PROJECT PROGRAM.</div><div>5. VERIFY EQUIPMENT SPECIFICATIONS, POWER AND INSTALLATION REQUIREMENTS WITH MANUFACTURER TO ENSURE PROPER FIT AND FUNCTION.</div><div>6. VERIFY ADEQUATE REQUIREMENTS OF ELECTRICAL, TELEPHONE AND OTHER EQUIPMENT PROVIDE NON-COMBUSTIBLE BLOODING WITH WALLS AS REQUIRED FOR PROPER EQUIPMENT INSTALLATION.</div><div>7. GIVE ADEQUATE LIGHT SWITCHES AND COVER WITH A SINGLE PLATE.</div><div>8. INDICATED DIMENSIONS ARE TO THE CENTER LINE OF OUTLET OR SWITCH, OR CLUSTER OF OUTLETS OR SWITCHES, UNLESS OTHERWISE NOTED.</div><div>9. VERIFY ADEQUATE REQUIREMENTS OF ELECTRICAL, TELEPHONE AND OTHER EQUIPMENT PROVIDE NON-COMBUSTIBLE BLOODING WITH WALLS AS REQUIRED FOR PROPER EQUIPMENT INSTALLATION.</div><div>10. IDENTIFY DEDICATED OR ISOLATED GROUND ELECTRICAL OUTLETS WITH A RED DOT.</div><div>11. MOUNT STANDARD WALL OUTLETS, SWITCHES AND THERMOSTATS AT HEIGHTS REQUIRED BY TITLE 24 AND ADA REQUIREMENTS, UNLESS OTHERWISE NOTED. WHEN THERMOSTATS AND LIGHT SWITCHES OCCUR TOGETHER, INSTALL BOTH ALIGNED HORIZONTALLY WITH CENTER LINE AT 4'-2" ABOVE FINISHED FLOOR.</div><div>12. IF SPECIFICALLY INDICATED ON PLANS, ALL OUTLET AND/OR SWITCHES ARE TO BE INSTALLED AS DIMENSIONED ANY OVERCROWDINGS BETWEEN A/P AND EXISTING FIELD CONDITIONS TO BE CLARIFIED WITH THE ARCHITECT BEFORE COMMENCEMENT OF WORK.</div><div>13. ALL ELECTRICAL AND TELEPHONE WORK TO BE INSTALLED IN STRICT ACCORDANCE WITH THE REQUIREMENTS OF ALL ELECTRICAL CODES, NATIONAL BOARD OF FIRE UNDERWRITING, UTILITY COMPANIES, TELEPHONE COMPANIES, THE LANDLORD, AND ALL OTHER AUTHORITIES HAVING JURISDICTION.</div><div>14. THE GC SHALL PROVIDE ALL CUTTING AND PATCHING OF FLOORS, WALLS AND CEILING AS REQUIRED.</div><div>15. U.O.N. ALL DEVICES (TELEPHONE, DATA, ELECTRIC, SWITCH) SHALL BE WHITE WITH WHITE COVER PLATES AND ALL EXISTING OUTLETS TO REMAIN TO RECEIVE NEW WHITE DEVICES WITH WHITE COVER PLATES.</div><div>16. SURFACES WITH EXISTING OUTLETS REMOVED SHALL BE PATCHED FLUSH WITH ADJACENT WALL SURFACES.</div><div>17. PROVIDE BREAKER LOOKS FOR A.C. UNITS AND POSITIVE PHONE SYSTEMS.</div><div>18. ALL TELEPHONE OUTLETS SHALL BE PROVIDED WITH TWO (2) NULL STRONG BACK TO THE TELEPHONE EQUIPMENT.</div><div>19. U.O.N. ALL ELECTRICAL, TELEPHONE, AND DATA OUTLETS ARE TO BE MOUNTED 10" A.F.F.</div><div>20. CENTERLINE TO CENTERLINE DIMENSIONS OF ANY OUTLET PAIR OR GROUP SHALL NOT EXCEED 8".</div><div>21. ALL LIGHT FIXTURES SHALL BEAR UL LABELS.</div><div>22. EMERGENCY & EXIT LIGHTS TO BE INSTALLED ON SEPARATE CIRCUIT.</div></div></div><tr><td data-bbox="784 27 1151 1052"><div><div>PLUMBING NOTES</div><div><div>1. WHERE POSSIBLE, UTILITIES SHALL BE CONCEALED WITHIN BUILDING WALLS OR COLUMN CHASES, NOT RUN ALONG WALL FACE, DO NOT STRIKE OUT OF FLOOR AND RUN ON THE FACE OF THE WALL.</div><div>2. ANY AND ALL EXPOSED PIPING OR FITTINGS TO BE STAINLESS STEEL, CHROME PLATED OR ENCLOSED IN A CONCEALED, MOUNTED STAINLESS STEEL CHASE.</div><div>3. DRINKING FOUNTAINS ARE BY MECHANICAL TRADES. VERIFY UTILITY REQUIREMENTS WITH MECHANICAL ENGINEER.</div></div><div><div>FIRE / LIFE SAFETY NOTES</div><div><div>1. FIRE PROTECTION EQUIPMENT AND SERVICE ACCESS MUST BE PROVIDED DURING THE CONSTRUCTION PERIOD AS REQUIRED BY THE COUNTY.</div><div>2. PROVIDE A PORTABLE FIRE EXTINGUISHER WITH A RATING OF NOT LESS THAN 2-A WITH 10-PO TYPICAL, EXTANT TO ALL PORTIONS OF THE PROJECT, AND ADDITIONAL EXTINGUISHERS AS REQUIRED BY THE GOVERNMENT FIELD INSPECTOR OR BUILDING DEPARTMENT INSPECTOR.</div><div>3. ALL FIRE RATED ASSEMBLIES SHALL BE INSTALLED, LABELED, AND INSPECTED IN ACCORDANCE WITH THE APPLICABLE BUILDING CODE WHEN REQUIRED.</div><div>4. PROVIDE EXIT SIGN WITH 1-7275 OVER REQUIRED EXITS, WHERE SHOWN ON DRAWINGS, AND ADDITIONAL SIGNS AS REQUIRED BY BUILDING DEPARTMENT INSPECTOR OR FIRE DEPARTMENT FIELD INSPECTOR. CONNECT EXIT SIGNS TO EMERGENCY POWER CIRCUITS. COMPLY WITH BUILDING CODES.</div><div>5. VERIFY EXISTING LIGHTING OF ONE FOOT CANEAT AT FLOOR LEVEL, COMPLY WITH BUILDING CODES.</div><div>6. EVERY EXIT DOOR SHALL BE OPERABLE FROM THE INSIDE WITHOUT THE USE OF A KEY OR ANY SPECIAL KNOWLEDGE OR EFFORT. SPECIAL LOCKING DEVICES SHALL BE OF AN APPROVED TYPE. ALL NEW DOORS SHALL HAVE APPROVED LEVER HANDLES.</div><div>7. DOORS OPENING INTO REQUIRED 1-HOUR FIRE-RATED CORRIDORS SHALL BE PROTECTED WITH A SHOWN ON DRAWING 1-HOUR APPROVED 1-HOUR APPROVED RATING AND SHALL BE SELF-CLOSING.</div><div>8. 24-HOUR DOOR JAMBS TO BE TIGHT-FITTING, SMOKE AND DRAFT CONTROLLED.</div><div>9. EXIT DOORS SHALL SWING IN THE DIRECTION OF TRAVEL WHEN SERVING 30 OR MORE PERSONS.</div><div>10. PROVIDE FIRE DAMPERS ON DOORS WHERE AIR DUCTS PENETRATE FIRE-RATED WALLS OR CHASES.</div><div>11. STORAGE, DISPENSING OR USE OF ANY FLAMMABLE OR COMBUSTIBLE LIQUIDS, FLAMMABLE GAS AND HAZARDOUS SUBSTANCES SHALL COMPLY WITH UNIFORM FIRE CODE REGULATIONS.</div><div>12. EXTEND OR MODIFY EXISTING FIRE / LIFE SAFETY SYSTEM AS REQUIRED TO PROVIDE AN APPROVED FIRE / LIFE SAFETY SYSTEM FOR FLOORING AND ZONE APPROVAL. SUBMIT PLANS TO FIRE DEPARTMENT WITH COMPLETE DESCRIPTION OF SEQUENCE OF OPERATION, AND OBTAIN APPROVAL PRIOR TO INSTALLATION.</div><div>13. LOCATE THE CENTER OF FIRE ALARM PULSING DEVICES 4" ABOVE THE LEVEL OF THE FLOOR, WORKING PLATFORM, GROUND SURFACE OR SIDEWALK.</div><div>14. EMERGENCY WARNERS BY SIREN SHALL ACTIVATE A HORN OF WARNING THE HEARING IMPAIRED. FLASHING VIBES SHALL HAVE A FREQUENCY OF NOT MORE THAN 60 FLASHES PER MINUTE.</div><div>15. THE FIRE PROTECTION DOCUMENTATION CONTAINED WITHIN THESE DRAWINGS HAVE BEEN PREPARED TO PERFORMANCE SPECIFICATION LEVEL OF EQUIPMENT FOR GENERAL DESIGN AND FIRE PROTECTION CODE COMPLIANCE (GENERAL). THE GENERAL CONTRACTOR TO OBTAIN A LICENSED FIRE DESIGN ENGINEER FROM THE STATE OF CONNECTICUT FOR THE PROJECT. THE DESIGN ENGINEER SHALL PROVIDE A P.F. SHOP DRAWINGS, STAMP / SIGN AND P.F. SHOP DRAWINGS AND SUBMIT S&P SHOP DRAWINGS FOR PERMIT.</div></div><div><div>STRUCTURAL NOTES</div><div><div>1. THE GENERAL CONTRACTOR SHALL PROVIDE COLD-FORMED METAL FRAMING SHOP DRAWINGS STAMPED BY A PROFESSIONAL ENGINEER.</div><div>2. ENGINEERING RESPONSIBILITY: PREPARATION OF SHOP DRAWINGS, DESIGN CALCULATIONS, AND OTHER STRUCTURAL DATA BY A QUALIFIED PROFESSIONAL ENGINEER.</div><div>3. PROFESSIONAL ENGINEER QUALIFICATION: A PROFESSIONAL ENGINEER WHO IS (1) FULLY QUALIFIED TO PRACTICE IN JURISDICTION WHERE PROJECT IS LOCATED AND WHO IS EXPERIENCED IN PRACTICES OF PROFESSIONAL ENGINEERING OF THE TYPE INDICATED. ENGINEERING SERVICES ARE OFFERED AS THOSE PROVIDED FOR THE PROJECT IN DESIGN, DESIGN AND DETAIL.</div><div>4. SHOP DRAWINGS:<div><div>A. INCLUDE LAYOUT, SPACINGS, SIZES, THICKNESSES, AND TYPES OF COLD-FORMED STEEL FRAMING, FABRICATION, AND FASTENINGS AND JOINTS AND CRANE DETAILS, INCLUDING MECHANICAL FASTENINGS.</div><div>B. INDICATE REINFORCING CHANNELS, OPENING FRAMING, SUPPLEMENTAL FRAMING, STRAPPING, BRACING, BRIDGING, SPLICES, ACCESSORIES, CONNECTION DETAILS, AND ATTACHMENT TO ADJACENT WORK.</div></div></div></div></div><tr><td data-bbox="1151 27 1516 1052"><div><div>MILLWORK NOTES</div><div><div>1. REFER TO FINISH SCHEDULE FOR FINISHES.</div><div>2. MILLWORK CONTRACTOR TO SITE VERIFY ALL DIMENSIONS PRIOR TO CONSTRUCTION.</div><div>3. GENERAL CONTRACTOR SHALL REFER TO CASEWORK & COUNTERTOP SPECIFICATIONS.</div><div>4. CUSTOMER SEER OF ALL SERVING COUNTERTOPS SHALL NOT EXCEED 1/8" ABOVE FINISH FLOOR.</div><div>5. G.C. IS RESPONSIBLE FOR SUPPLYING & INSTALLING ALL SITE REQUIREMENTS (IN WALL, BLOODING, ETC.) FOR MILLWORK. COORDINATE ALL REQUIREMENTS WITH VENDORS.</div><div>6. SHOP DRAWINGS MUST BE SUBMITTED AND APPROVED BY ARCHITECT & TENANT'S CONSTRUCTION MANAGER FOR APPROVAL PRIOR TO FABRICATION WHEN REQUIRED.</div><div>7. ALL MILLWORK IS TO CONFORM TO AIA/NAAMC.A.C. PREMIUM STANDARDS.</div><div>8. G.C. IS RESPONSIBLE FOR THE COORDINATION OF THE INSTALLATION PROCESS OF ALL MILLWORK, INCLUDING TOUCH-UP OF ANY DAMAGE AND FINAL CLEANING AFTER INSTALLATION.</div><div>9. MILLWORK VENDOR TO COORDINATE WITH OTHER TRADES AND PROVIDE CONCEALED GROUNDS & OR FLOORING AS REQUIRED. PROVIDE CUTOUTS FOR OUTLETS AND EQUIPMENT AS REQUIRED. VERIFY ALL FABRICATED PARTS TO FABRICATION.</div><div>10. G.C. TO PROVIDE ADDITIONAL CUTOUTS AS REQUIRED IN VENDOR SUPPLIED MILLWORK. ALL MODIFICATIONS TO BE PERFORMED BY A QUALIFIED PART CARPENTER. ALL CUTS TO BE PLACED TO MINIMIZE VISIBILITY. NO ADDITIONAL MODIFICATION TO MILLWORK WILL BE ALLOWED WITHOUT PRIOR APPROVAL FROM TENANT'S PROJECT MANAGER.</div><div>11. ALL CUTOUTS IN UNFINISHED STONE SHALL BE SPACED A MINIMUM OF 2" APART AND/OR PER MANUFACTURER'S SPECIFICATIONS.</div><div>12. FINISHED VENEERED WOOD SHALL BE FREE FROM KNOTS, SHAKES AND OTHER DEFECTS AFFECTING OVERALL QUALITY OR APPEARANCE, & SHALL BE CAREFULLY SELECTED FOR GRAIN & COLOR FOR MATCHED VARIATIONS AT JOINTS BETWEEN VENEERS.</div><div>13. ALL MILLWORK IS TO BE LABELLED OUT IN A TRADE SHOP ONLY. NO FIELD CUTTING WILL BE ALLOWED. ALSO, NO FIELD FINISHING MORE THAN 18" FROM TOP-UPS OF MILLWORK WILL BE PERMITTED.</div><div>14. ALL MILLWORK HARDWARE TO BE FURNISHED & INSTALLED BY MILLWORK VENDOR.</div><div>15. MILLWORK VENDOR TO FINISH & INSTALL RUBBER SURFACES ON ALL DOORS AND DRAWERS.</div><div>16. WOOD BLOCKING SHALL BE PRE-TREATED IN ACCORDANCE WITH APPLICABLE CODE REQUIREMENTS. LENGTHS OF WALL BLOCKING ARE TYPICAL, ALWAYS EXTENDING TO THE MOST STUD IN EACH DIRECTION.</div><div>17. ALL SURFACES TO BE FINISHED, NO EXPOSED UNFINISHED SURFACES WILL BE ACCEPTED.</div><div>18. U.O.N. ALL INTERIOR KNEEWALL SURFACES TO RECEIVE A WHITE CLEANABLE TRIP FINISH.</div><div>19. U.O.N. ALL CABINET INTERIORS TO RECEIVE A WHITE PLASTIC LAMINATE FINISH.</div><div>20. U.O.N. THE UNDERSIDE OF ALL COUNTERTOP SUBSTRATES TO RECEIVE A WHITE PLASTIC LAMINATE FINISH.</div><div>21. MILLWORK CONTRACTOR TO INSURE ALL SPECIFIED EQUIPMENT FITS INTO COUNTER AS NOTED. CHECK ALL MANUFACTURER'S SPECIFICATIONS PRIOR TO FABRICATION.</div><div>22. MILLWORK CONTRACTOR TO INSURE COUNTER FITS BRUSH WITH SURROUNDING SITE AND FINISH.</div><div>23. COORDINATE ALL CUTOUTS A/P FINAL LOCATIONS WITH KITCHEN EQUIPMENT CONTRACTOR, TYP.</div><div>24. 1/2" X 1/2" STAINLESS STEEL CORNER GUARDS ALL EXPOSED OUTSIDE CORNERS AT MILLWORK, TYP.</div><div>25. 1/2" X 1/2" STAINLESS STEEL BOTTOM EDGING AT ALL EXPOSED LAMINATE TOP-EDGES AT MILLWORK, TYP.</div><div>26. FROD EQUIPMENT AND MILLWORK TO BE SEALED, USING APPROVED CLEAR SILICONE SEALANT, TO FLOORS, WALLS AND COUNTER TOPS AS REQUIRED.</div><div>27. ALL ENGINEERED STONE BACKSPLASHES AND COUNTERTOPS SHALL BE SEALED TO ADJACENT WALLS WITH CLEAR SILICONE SEALANT AS REQUIRED. GAPS BETWEEN ENGINEERED STONE AND WALL SURFACES SHALL NOT EXCEED 1/8" MAX.</div><div>28. ANY SUPPORT LEGS INDICATED ON THE DRAWINGS ARE SUGGESTED PLACEMENT ONLY. QUANTITY OF SUPPORT LEGS SHALL BE DETERMINED BY THE MILLWORK CONTRACTOR AND ICE.</div><div>29. INSTALLATION OF EQUIPMENT AND MILLWORK TO INCLUDE PROPER SPACING TO ALLOW FOR CLEANING.</div><div>30. ALL STAINLESS STEEL, ADJUSTABLE LEGS SHALL HAVE FEET MECHANICALLY FASTENED TO THE FLOOR.</div><div>31. MAX SPAN BETWEEN LOW WALL SUPPORTS AND/OR STAINLESS STEEL LEGS SHALL NOT EXCEED 4'-0" MAX.</div><div>32. MILLWORK CONTRACTOR TO LASE WITH ICE TO COORDINATE ADEQUATE MILLWORK REINFORCEMENT TO SUPPORT SPECIFIC EQUIPMENT AT FULL CAPACITY.</div><div>33. WHERE COUNTERTOP SUBSTRATE INTERFERES WITH UNDERCOUNTER EQUIPMENT CLEARANCES, STEEL PLAT BARS SHALL BE USED TO SUPPORT THE COUNTERTOP AS NEEDED.</div><div>34. ALL SEAM LOCATIONS SHALL BE SUPPORTED BY LOW WALL AND/OR STAINLESS STEEL LEG SUPPORT WITH STEEL CHANNEL RUNNING BACK TO MAIN LOW WALL SUPPORT.</div><div>35. AFTER WORK IS COMPLETED ALL MILLWORK AND/OR EQUIPMENT WILL BE CLEANED AND SANITIZED BEFORE OPERATIONS COMMENCE.</div><div>36. ALL PLYWOOD SUBSTRATES SHALL BE MAXIMUM GRADE PLYWOOD OR APPROVED EQUAL.</div><div>37. G.C. SHALL FURNISH AND INSTALL ACCESS PANELS IN MILLWORK WHERE INDICATED ON DRAWINGS. REQUIRED BY THE NATURE OF THE PROJECT, OR REQUIRED TO SERVICE DEVICES WITHIN THE MILLWORK. THE ACCESS PANELS SHALL BE OF SUFFICIENT SIZE SO THAT ALL EQUIPMENT WILL BE COMPLETELY SERVICEABLE. PANELS SHALL BE FINISHED TO MATCH THE SURFACE IN WHICH THEY ARE LOCATED.</div><div>38. MILLWORK CONTRACTOR TO PROVIDE ADEQUATE VENTILATION IN EQUIPMENT FOR REQUIRED EQUIPMENT. CHECK ALL MANUFACTURER'S SPECIFICATIONS PRIOR TO FABRICATION.</div><div>39. U.O.N. LOUVERED MILLWORK DOORS SHALL HAVE TOP VENTILATION SLOTS ROUTED INTO THE ENTIRE DOOR & 1/2" O.C. VENTILATION SLOTS SHALL STOP 1/8" FROM ALL SIDES. INSIDE OF SLOT TO BE PAINTED BLACK WITH WATERPROOF SEALANT.</div></div></div><tr><td data-bbox="1516 27 1593 1052"><div><div>TORRINGTON SAVINGS BANK</div><div>TORRINGTON SAVINGS BANK 635 MAIN ST., TORRINGTON, CT 06790</div></div></td></tr></td></tr></div></div></td></tr></div>	<div><div>PLUMBING NOTES</div><div><div>1. WHERE POSSIBLE, UTILITIES SHALL BE CONCEALED WITHIN BUILDING WALLS OR COLUMN CHASES, NOT RUN ALONG WALL FACE, DO NOT STRIKE OUT OF FLOOR AND RUN ON THE FACE OF THE WALL.</div><div>2. ANY AND ALL EXPOSED PIPING OR FITTINGS TO BE STAINLESS STEEL, CHROME PLATED OR ENCLOSED IN A CONCEALED, MOUNTED STAINLESS STEEL CHASE.</div><div>3. DRINKING FOUNTAINS ARE BY MECHANICAL TRADES. VERIFY UTILITY REQUIREMENTS WITH MECHANICAL ENGINEER.</div></div><div><div>FIRE / LIFE SAFETY NOTES</div><div><div>1. FIRE PROTECTION EQUIPMENT AND SERVICE ACCESS MUST BE PROVIDED DURING THE CONSTRUCTION PERIOD AS REQUIRED BY THE COUNTY.</div><div>2. PROVIDE A PORTABLE FIRE EXTINGUISHER WITH A RATING OF NOT LESS THAN 2-A WITH 10-PO TYPICAL, EXTANT TO ALL PORTIONS OF THE PROJECT, AND ADDITIONAL EXTINGUISHERS AS REQUIRED BY THE GOVERNMENT FIELD INSPECTOR OR BUILDING DEPARTMENT INSPECTOR.</div><div>3. ALL FIRE RATED ASSEMBLIES SHALL BE INSTALLED, LABELED, AND INSPECTED IN ACCORDANCE WITH THE APPLICABLE BUILDING CODE WHEN REQUIRED.</div><div>4. PROVIDE EXIT SIGN WITH 1-7275 OVER REQUIRED EXITS, WHERE SHOWN ON DRAWINGS, AND ADDITIONAL SIGNS AS REQUIRED BY BUILDING DEPARTMENT INSPECTOR OR FIRE DEPARTMENT FIELD INSPECTOR. CONNECT EXIT SIGNS TO EMERGENCY POWER CIRCUITS. COMPLY WITH BUILDING CODES.</div><div>5. VERIFY EXISTING LIGHTING OF ONE FOOT CANEAT AT FLOOR LEVEL, COMPLY WITH BUILDING CODES.</div><div>6. EVERY EXIT DOOR SHALL BE OPERABLE FROM THE INSIDE WITHOUT THE USE OF A KEY OR ANY SPECIAL KNOWLEDGE OR EFFORT. SPECIAL LOCKING DEVICES SHALL BE OF AN APPROVED TYPE. ALL NEW DOORS SHALL HAVE APPROVED LEVER HANDLES.</div><div>7. DOORS OPENING INTO REQUIRED 1-HOUR FIRE-RATED CORRIDORS SHALL BE PROTECTED WITH A SHOWN ON DRAWING 1-HOUR APPROVED 1-HOUR APPROVED RATING AND SHALL BE SELF-CLOSING.</div><div>8. 24-HOUR DOOR JAMBS TO BE TIGHT-FITTING, SMOKE AND DRAFT CONTROLLED.</div><div>9. EXIT DOORS SHALL SWING IN THE DIRECTION OF TRAVEL WHEN SERVING 30 OR MORE PERSONS.</div><div>10. PROVIDE FIRE DAMPERS ON DOORS WHERE AIR DUCTS PENETRATE FIRE-RATED WALLS OR CHASES.</div><div>11. STORAGE, DISPENSING OR USE OF ANY FLAMMABLE OR COMBUSTIBLE LIQUIDS, FLAMMABLE GAS AND HAZARDOUS SUBSTANCES SHALL COMPLY WITH UNIFORM FIRE CODE REGULATIONS.</div><div>12. EXTEND OR MODIFY EXISTING FIRE / LIFE SAFETY SYSTEM AS REQUIRED TO PROVIDE AN APPROVED FIRE / LIFE SAFETY SYSTEM FOR FLOORING AND ZONE APPROVAL. SUBMIT PLANS TO FIRE DEPARTMENT WITH COMPLETE DESCRIPTION OF SEQUENCE OF OPERATION, AND OBTAIN APPROVAL PRIOR TO INSTALLATION.</div><div>13. LOCATE THE CENTER OF FIRE ALARM PULSING DEVICES 4" ABOVE THE LEVEL OF THE FLOOR, WORKING PLATFORM, GROUND SURFACE OR SIDEWALK.</div><div>14. EMERGENCY WARNERS BY SIREN SHALL ACTIVATE A HORN OF WARNING THE HEARING IMPAIRED. FLASHING VIBES SHALL HAVE A FREQUENCY OF NOT MORE THAN 60 FLASHES PER MINUTE.</div><div>15. THE FIRE PROTECTION DOCUMENTATION CONTAINED WITHIN THESE DRAWINGS HAVE BEEN PREPARED TO PERFORMANCE SPECIFICATION LEVEL OF EQUIPMENT FOR GENERAL DESIGN AND FIRE PROTECTION CODE COMPLIANCE (GENERAL). THE GENERAL CONTRACTOR TO OBTAIN A LICENSED FIRE DESIGN ENGINEER FROM THE STATE OF CONNECTICUT FOR THE PROJECT. THE DESIGN ENGINEER SHALL PROVIDE A P.F. SHOP DRAWINGS, STAMP / SIGN AND P.F. SHOP DRAWINGS AND SUBMIT S&P SHOP DRAWINGS FOR PERMIT.</div></div><div><div>STRUCTURAL NOTES</div><div><div>1. THE GENERAL CONTRACTOR SHALL PROVIDE COLD-FORMED METAL FRAMING SHOP DRAWINGS STAMPED BY A PROFESSIONAL ENGINEER.</div><div>2. ENGINEERING RESPONSIBILITY: PREPARATION OF SHOP DRAWINGS, DESIGN CALCULATIONS, AND OTHER STRUCTURAL DATA BY A QUALIFIED PROFESSIONAL ENGINEER.</div><div>3. PROFESSIONAL ENGINEER QUALIFICATION: A PROFESSIONAL ENGINEER WHO IS (1) FULLY QUALIFIED TO PRACTICE IN JURISDICTION WHERE PROJECT IS LOCATED AND WHO IS EXPERIENCED IN PRACTICES OF PROFESSIONAL ENGINEERING OF THE TYPE INDICATED. ENGINEERING SERVICES ARE OFFERED AS THOSE PROVIDED FOR THE PROJECT IN DESIGN, DESIGN AND DETAIL.</div><div>4. SHOP DRAWINGS:<div><div>A. INCLUDE LAYOUT, SPACINGS, SIZES, THICKNESSES, AND TYPES OF COLD-FORMED STEEL FRAMING, FABRICATION, AND FASTENINGS AND JOINTS AND CRANE DETAILS, INCLUDING MECHANICAL FASTENINGS.</div><div>B. INDICATE REINFORCING CHANNELS, OPENING FRAMING, SUPPLEMENTAL FRAMING, STRAPPING, BRACING, BRIDGING, SPLICES, ACCESSORIES, CONNECTION DETAILS, AND ATTACHMENT TO ADJACENT WORK.</div></div></div></div></div><tr><td data-bbox="1151 27 1516 1052"><div><div>MILLWORK NOTES</div><div><div>1. REFER TO FINISH SCHEDULE FOR FINISHES.</div><div>2. MILLWORK CONTRACTOR TO SITE VERIFY ALL DIMENSIONS PRIOR TO CONSTRUCTION.</div><div>3. GENERAL CONTRACTOR SHALL REFER TO CASEWORK & COUNTERTOP SPECIFICATIONS.</div><div>4. CUSTOMER SEER OF ALL SERVING COUNTERTOPS SHALL NOT EXCEED 1/8" ABOVE FINISH FLOOR.</div><div>5. G.C. IS RESPONSIBLE FOR SUPPLYING & INSTALLING ALL SITE REQUIREMENTS (IN WALL, BLOODING, ETC.) FOR MILLWORK. COORDINATE ALL REQUIREMENTS WITH VENDORS.</div><div>6. SHOP DRAWINGS MUST BE SUBMITTED AND APPROVED BY ARCHITECT & TENANT'S CONSTRUCTION MANAGER FOR APPROVAL PRIOR TO FABRICATION WHEN REQUIRED.</div><div>7. ALL MILLWORK IS TO CONFORM TO AIA/NAAMC.A.C. PREMIUM STANDARDS.</div><div>8. G.C. IS RESPONSIBLE FOR THE COORDINATION OF THE INSTALLATION PROCESS OF ALL MILLWORK, INCLUDING TOUCH-UP OF ANY DAMAGE AND FINAL CLEANING AFTER INSTALLATION.</div><div>9. MILLWORK VENDOR TO COORDINATE WITH OTHER TRADES AND PROVIDE CONCEALED GROUNDS & OR FLOORING AS REQUIRED. PROVIDE CUTOUTS FOR OUTLETS AND EQUIPMENT AS REQUIRED. VERIFY ALL FABRICATED PARTS TO FABRICATION.</div><div>10. G.C. TO PROVIDE ADDITIONAL CUTOUTS AS REQUIRED IN VENDOR SUPPLIED MILLWORK. ALL MODIFICATIONS TO BE PERFORMED BY A QUALIFIED PART CARPENTER. ALL CUTS TO BE PLACED TO MINIMIZE VISIBILITY. NO ADDITIONAL MODIFICATION TO MILLWORK WILL BE ALLOWED WITHOUT PRIOR APPROVAL FROM TENANT'S PROJECT MANAGER.</div><div>11. ALL CUTOUTS IN UNFINISHED STONE SHALL BE SPACED A MINIMUM OF 2" APART AND/OR PER MANUFACTURER'S SPECIFICATIONS.</div><div>12. FINISHED VENEERED WOOD SHALL BE FREE FROM KNOTS, SHAKES AND OTHER DEFECTS AFFECTING OVERALL QUALITY OR APPEARANCE, & SHALL BE CAREFULLY SELECTED FOR GRAIN & COLOR FOR MATCHED VARIATIONS AT JOINTS BETWEEN VENEERS.</div><div>13. ALL MILLWORK IS TO BE LABELLED OUT IN A TRADE SHOP ONLY. NO FIELD CUTTING WILL BE ALLOWED. ALSO, NO FIELD FINISHING MORE THAN 18" FROM TOP-UPS OF MILLWORK WILL BE PERMITTED.</div><div>14. ALL MILLWORK HARDWARE TO BE FURNISHED & INSTALLED BY MILLWORK VENDOR.</div><div>15. MILLWORK VENDOR TO FINISH & INSTALL RUBBER SURFACES ON ALL DOORS AND DRAWERS.</div><div>16. WOOD BLOCKING SHALL BE PRE-TREATED IN ACCORDANCE WITH APPLICABLE CODE REQUIREMENTS. LENGTHS OF WALL BLOCKING ARE TYPICAL, ALWAYS EXTENDING TO THE MOST STUD IN EACH DIRECTION.</div><div>17. ALL SURFACES TO BE FINISHED, NO EXPOSED UNFINISHED SURFACES WILL BE ACCEPTED.</div><div>18. U.O.N. ALL INTERIOR KNEEWALL SURFACES TO RECEIVE A WHITE CLEANABLE TRIP FINISH.</div><div>19. U.O.N. ALL CABINET INTERIORS TO RECEIVE A WHITE PLASTIC LAMINATE FINISH.</div><div>20. U.O.N. THE UNDERSIDE OF ALL COUNTERTOP SUBSTRATES TO RECEIVE A WHITE PLASTIC LAMINATE FINISH.</div><div>21. MILLWORK CONTRACTOR TO INSURE ALL SPECIFIED EQUIPMENT FITS INTO COUNTER AS NOTED. CHECK ALL MANUFACTURER'S SPECIFICATIONS PRIOR TO FABRICATION.</div><div>22. MILLWORK CONTRACTOR TO INSURE COUNTER FITS BRUSH WITH SURROUNDING SITE AND FINISH.</div><div>23. COORDINATE ALL CUTOUTS A/P FINAL LOCATIONS WITH KITCHEN EQUIPMENT CONTRACTOR, TYP.</div><div>24. 1/2" X 1/2" STAINLESS STEEL CORNER GUARDS ALL EXPOSED OUTSIDE CORNERS AT MILLWORK, TYP.</div><div>25. 1/2" X 1/2" STAINLESS STEEL BOTTOM EDGING AT ALL EXPOSED LAMINATE TOP-EDGES AT MILLWORK, TYP.</div><div>26. FROD EQUIPMENT AND MILLWORK TO BE SEALED, USING APPROVED CLEAR SILICONE SEALANT, TO FLOORS, WALLS AND COUNTER TOPS AS REQUIRED.</div><div>27. ALL ENGINEERED STONE BACKSPLASHES AND COUNTERTOPS SHALL BE SEALED TO ADJACENT WALLS WITH CLEAR SILICONE SEALANT AS REQUIRED. GAPS BETWEEN ENGINEERED STONE AND WALL SURFACES SHALL NOT EXCEED 1/8" MAX.</div><div>28. ANY SUPPORT LEGS INDICATED ON THE DRAWINGS ARE SUGGESTED PLACEMENT ONLY. QUANTITY OF SUPPORT LEGS SHALL BE DETERMINED BY THE MILLWORK CONTRACTOR AND ICE.</div><div>29. INSTALLATION OF EQUIPMENT AND MILLWORK TO INCLUDE PROPER SPACING TO ALLOW FOR CLEANING.</div><div>30. ALL STAINLESS STEEL, ADJUSTABLE LEGS SHALL HAVE FEET MECHANICALLY FASTENED TO THE FLOOR.</div><div>31. MAX SPAN BETWEEN LOW WALL SUPPORTS AND/OR STAINLESS STEEL LEGS SHALL NOT EXCEED 4'-0" MAX.</div><div>32. MILLWORK CONTRACTOR TO LASE WITH ICE TO COORDINATE ADEQUATE MILLWORK REINFORCEMENT TO SUPPORT SPECIFIC EQUIPMENT AT FULL CAPACITY.</div><div>33. WHERE COUNTERTOP SUBSTRATE INTERFERES WITH UNDERCOUNTER EQUIPMENT CLEARANCES, STEEL PLAT BARS SHALL BE USED TO SUPPORT THE COUNTERTOP AS NEEDED.</div><div>34. ALL SEAM LOCATIONS SHALL BE SUPPORTED BY LOW WALL AND/OR STAINLESS STEEL LEG SUPPORT WITH STEEL CHANNEL RUNNING BACK TO MAIN LOW WALL SUPPORT.</div><div>35. AFTER WORK IS COMPLETED ALL MILLWORK AND/OR EQUIPMENT WILL BE CLEANED AND SANITIZED BEFORE OPERATIONS COMMENCE.</div><div>36. ALL PLYWOOD SUBSTRATES SHALL BE MAXIMUM GRADE PLYWOOD OR APPROVED EQUAL.</div><div>37. G.C. SHALL FURNISH AND INSTALL ACCESS PANELS IN MILLWORK WHERE INDICATED ON DRAWINGS. REQUIRED BY THE NATURE OF THE PROJECT, OR REQUIRED TO SERVICE DEVICES WITHIN THE MILLWORK. THE ACCESS PANELS SHALL BE OF SUFFICIENT SIZE SO THAT ALL EQUIPMENT WILL BE COMPLETELY SERVICEABLE. PANELS SHALL BE FINISHED TO MATCH THE SURFACE IN WHICH THEY ARE LOCATED.</div><div>38. MILLWORK CONTRACTOR TO PROVIDE ADEQUATE VENTILATION IN EQUIPMENT FOR REQUIRED EQUIPMENT. CHECK ALL MANUFACTURER'S SPECIFICATIONS PRIOR TO FABRICATION.</div><div>39. U.O.N. LOUVERED MILLWORK DOORS SHALL HAVE TOP VENTILATION SLOTS ROUTED INTO THE ENTIRE DOOR & 1/2" O.C. VENTILATION SLOTS SHALL STOP 1/8" FROM ALL SIDES. INSIDE OF SLOT TO BE PAINTED BLACK WITH WATERPROOF SEALANT.</div></div></div><tr><td data-bbox="1516 27 1593 1052"><div><div>TORRINGTON SAVINGS BANK</div><div>TORRINGTON SAVINGS BANK 635 MAIN ST., TORRINGTON, CT 06790</div></div></td></tr></td></tr></div></div>	<div><div>MILLWORK NOTES</div><div><div>1. REFER TO FINISH SCHEDULE FOR FINISHES.</div><div>2. MILLWORK CONTRACTOR TO SITE VERIFY ALL DIMENSIONS PRIOR TO CONSTRUCTION.</div><div>3. GENERAL CONTRACTOR SHALL REFER TO CASEWORK & COUNTERTOP SPECIFICATIONS.</div><div>4. CUSTOMER SEER OF ALL SERVING COUNTERTOPS SHALL NOT EXCEED 1/8" ABOVE FINISH FLOOR.</div><div>5. G.C. IS RESPONSIBLE FOR SUPPLYING & INSTALLING ALL SITE REQUIREMENTS (IN WALL, BLOODING, ETC.) FOR MILLWORK. COORDINATE ALL REQUIREMENTS WITH VENDORS.</div><div>6. SHOP DRAWINGS MUST BE SUBMITTED AND APPROVED BY ARCHITECT & TENANT'S CONSTRUCTION MANAGER FOR APPROVAL PRIOR TO FABRICATION WHEN REQUIRED.</div><div>7. ALL MILLWORK IS TO CONFORM TO AIA/NAAMC.A.C. PREMIUM STANDARDS.</div><div>8. G.C. IS RESPONSIBLE FOR THE COORDINATION OF THE INSTALLATION PROCESS OF ALL MILLWORK, INCLUDING TOUCH-UP OF ANY DAMAGE AND FINAL CLEANING AFTER INSTALLATION.</div><div>9. MILLWORK VENDOR TO COORDINATE WITH OTHER TRADES AND PROVIDE CONCEALED GROUNDS & OR FLOORING AS REQUIRED. PROVIDE CUTOUTS FOR OUTLETS AND EQUIPMENT AS REQUIRED. VERIFY ALL FABRICATED PARTS TO FABRICATION.</div><div>10. G.C. TO PROVIDE ADDITIONAL CUTOUTS AS REQUIRED IN VENDOR SUPPLIED MILLWORK. ALL MODIFICATIONS TO BE PERFORMED BY A QUALIFIED PART CARPENTER. ALL CUTS TO BE PLACED TO MINIMIZE VISIBILITY. NO ADDITIONAL MODIFICATION TO MILLWORK WILL BE ALLOWED WITHOUT PRIOR APPROVAL FROM TENANT'S PROJECT MANAGER.</div><div>11. ALL CUTOUTS IN UNFINISHED STONE SHALL BE SPACED A MINIMUM OF 2" APART AND/OR PER MANUFACTURER'S SPECIFICATIONS.</div><div>12. FINISHED VENEERED WOOD SHALL BE FREE FROM KNOTS, SHAKES AND OTHER DEFECTS AFFECTING OVERALL QUALITY OR APPEARANCE, & SHALL BE CAREFULLY SELECTED FOR GRAIN & COLOR FOR MATCHED VARIATIONS AT JOINTS BETWEEN VENEERS.</div><div>13. ALL MILLWORK IS TO BE LABELLED OUT IN A TRADE SHOP ONLY. NO FIELD CUTTING WILL BE ALLOWED. ALSO, NO FIELD FINISHING MORE THAN 18" FROM TOP-UPS OF MILLWORK WILL BE PERMITTED.</div><div>14. ALL MILLWORK HARDWARE TO BE FURNISHED & INSTALLED BY MILLWORK VENDOR.</div><div>15. MILLWORK VENDOR TO FINISH & INSTALL RUBBER SURFACES ON ALL DOORS AND DRAWERS.</div><div>16. WOOD BLOCKING SHALL BE PRE-TREATED IN ACCORDANCE WITH APPLICABLE CODE REQUIREMENTS. LENGTHS OF WALL BLOCKING ARE TYPICAL, ALWAYS EXTENDING TO THE MOST STUD IN EACH DIRECTION.</div><div>17. ALL SURFACES TO BE FINISHED, NO EXPOSED UNFINISHED SURFACES WILL BE ACCEPTED.</div><div>18. U.O.N. ALL INTERIOR KNEEWALL SURFACES TO RECEIVE A WHITE CLEANABLE TRIP FINISH.</div><div>19. U.O.N. ALL CABINET INTERIORS TO RECEIVE A WHITE PLASTIC LAMINATE FINISH.</div><div>20. U.O.N. THE UNDERSIDE OF ALL COUNTERTOP SUBSTRATES TO RECEIVE A WHITE PLASTIC LAMINATE FINISH.</div><div>21. MILLWORK CONTRACTOR TO INSURE ALL SPECIFIED EQUIPMENT FITS INTO COUNTER AS NOTED. CHECK ALL MANUFACTURER'S SPECIFICATIONS PRIOR TO FABRICATION.</div><div>22. MILLWORK CONTRACTOR TO INSURE COUNTER FITS BRUSH WITH SURROUNDING SITE AND FINISH.</div><div>23. COORDINATE ALL CUTOUTS A/P FINAL LOCATIONS WITH KITCHEN EQUIPMENT CONTRACTOR, TYP.</div><div>24. 1/2" X 1/2" STAINLESS STEEL CORNER GUARDS ALL EXPOSED OUTSIDE CORNERS AT MILLWORK, TYP.</div><div>25. 1/2" X 1/2" STAINLESS STEEL BOTTOM EDGING AT ALL EXPOSED LAMINATE TOP-EDGES AT MILLWORK, TYP.</div><div>26. FROD EQUIPMENT AND MILLWORK TO BE SEALED, USING APPROVED CLEAR SILICONE SEALANT, TO FLOORS, WALLS AND COUNTER TOPS AS REQUIRED.</div><div>27. ALL ENGINEERED STONE BACKSPLASHES AND COUNTERTOPS SHALL BE SEALED TO ADJACENT WALLS WITH CLEAR SILICONE SEALANT AS REQUIRED. GAPS BETWEEN ENGINEERED STONE AND WALL SURFACES SHALL NOT EXCEED 1/8" MAX.</div><div>28. ANY SUPPORT LEGS INDICATED ON THE DRAWINGS ARE SUGGESTED PLACEMENT ONLY. QUANTITY OF SUPPORT LEGS SHALL BE DETERMINED BY THE MILLWORK CONTRACTOR AND ICE.</div><div>29. INSTALLATION OF EQUIPMENT AND MILLWORK TO INCLUDE PROPER SPACING TO ALLOW FOR CLEANING.</div><div>30. ALL STAINLESS STEEL, ADJUSTABLE LEGS SHALL HAVE FEET MECHANICALLY FASTENED TO THE FLOOR.</div><div>31. MAX SPAN BETWEEN LOW WALL SUPPORTS AND/OR STAINLESS STEEL LEGS SHALL NOT EXCEED 4'-0" MAX.</div><div>32. MILLWORK CONTRACTOR TO LASE WITH ICE TO COORDINATE ADEQUATE MILLWORK REINFORCEMENT TO SUPPORT SPECIFIC EQUIPMENT AT FULL CAPACITY.</div><div>33. WHERE COUNTERTOP SUBSTRATE INTERFERES WITH UNDERCOUNTER EQUIPMENT CLEARANCES, STEEL PLAT BARS SHALL BE USED TO SUPPORT THE COUNTERTOP AS NEEDED.</div><div>34. ALL SEAM LOCATIONS SHALL BE SUPPORTED BY LOW WALL AND/OR STAINLESS STEEL LEG SUPPORT WITH STEEL CHANNEL RUNNING BACK TO MAIN LOW WALL SUPPORT.</div><div>35. AFTER WORK IS COMPLETED ALL MILLWORK AND/OR EQUIPMENT WILL BE CLEANED AND SANITIZED BEFORE OPERATIONS COMMENCE.</div><div>36. ALL PLYWOOD SUBSTRATES SHALL BE MAXIMUM GRADE PLYWOOD OR APPROVED EQUAL.</div><div>37. G.C. SHALL FURNISH AND INSTALL ACCESS PANELS IN MILLWORK WHERE INDICATED ON DRAWINGS. REQUIRED BY THE NATURE OF THE PROJECT, OR REQUIRED TO SERVICE DEVICES WITHIN THE MILLWORK. THE ACCESS PANELS SHALL BE OF SUFFICIENT SIZE SO THAT ALL EQUIPMENT WILL BE COMPLETELY SERVICEABLE. PANELS SHALL BE FINISHED TO MATCH THE SURFACE IN WHICH THEY ARE LOCATED.</div><div>38. MILLWORK CONTRACTOR TO PROVIDE ADEQUATE VENTILATION IN EQUIPMENT FOR REQUIRED EQUIPMENT. CHECK ALL MANUFACTURER'S SPECIFICATIONS PRIOR TO FABRICATION.</div><div>39. U.O.N. LOUVERED MILLWORK DOORS SHALL HAVE TOP VENTILATION SLOTS ROUTED INTO THE ENTIRE DOOR & 1/2" O.C. VENTILATION SLOTS SHALL STOP 1/8" FROM ALL SIDES. INSIDE OF SLOT TO BE PAINTED BLACK WITH WATERPROOF SEALANT.</div></div></div> <tr><td data-bbox="1516 27 1593 1052"><div><div>TORRINGTON SAVINGS BANK</div><div>TORRINGTON SAVINGS BANK 635 MAIN ST., TORRINGTON, CT 06790</div></div></td></tr>	<div><div>TORRINGTON SAVINGS BANK</div><div>TORRINGTON SAVINGS BANK 635 MAIN ST., TORRINGTON, CT 06790</div></div>
<div><div>MECHANICAL NOTES</div><div><div>1. EXCEPT WHERE SHOWN IN DIMENSIONAL DETAIL, THE LOCATIONS OF MECHANICAL EQUIPMENT, DUCTS, PIPING, AND FITTINGS ARE ONLY APPROXIMATE. THE EXACT LOCATIONS SHALL BE DETERMINED BY THE CONTRACTOR, SUBJECT TO APPROVAL BY THE ARCHITECT.</div><div>2. CONTRACTOR SHALL VERIFY SIZES AND LOCATIONS OF ALL MECHANICAL EQUIPMENT PADS AND BASES AS WELL AS POWER AND WATER OR DRAIN INSTALLATIONS WITH EQUIPMENT MANUFACTURERS BEFORE PROCEEDING WITH THE WORK. CHANGES TO ACCOMMODATE FIELD CONDITIONS OR SUBSTITUTIONS SHALL BE MADE AT NO ADDITIONAL COST.</div><div>3. MECHANICAL SUPPLY AND RETURN AIR SHAPES SHALL BE AIR TIGHT AND SEALED.</div><div>4. ALL RELEASABLE AND/OR, U.O.N. SHALL MEET THE REQUIREMENTS OF NFPA 96A 3-2-2 IN CONSTRUCTION AND INSTALLATION.</div></div><div><div>ELECTRICAL / TELEPHONE NOTES</div><div><div>1. ALL LINE AND DISCONNECT SWITCHES, SAFETY CUT-OUTS, CONTROL PANELS, FUSE BOXES, OR OTHER ELECTRICAL CONTROLS, FITTINGS, AND CONNECTIONS NOT FURNISHED AS A STANDARD PART OF THE FUTURE BY THE MANUFACTURERS TO BE FURNISHED AND INSTALLED UNDER ELECTRICAL CONTRACT. STARTING SWITCHES PROVIDED BY EQUIPMENT CONTRACTOR AND FURNISHED LOOSE AS STANDARD BY FOOD SERVICE EQUIPMENT MANUFACTURERS OTHER THAN CUSTOM FABRICATED ITEMS) TO BE MOUNTED AND WIRED COMPLETE UNDER ELECTRICAL CONTRACT.</div><div>2. ELECTRICAL SUB TO VERIFY SERVICE PROVIDED IS ADEQUATE. IF NOT, NOTIFY ARCHITECT IMMEDIATELY.</div><div>3. PRIOR TO CORING SLAB, VERIFY LOCATIONS WITH ARCHITECT AND COORDINATE LOCATIONS WITH OWNER. ALL LOCATIONS SHALL BE MARKED ON LANDSCAPE APPROVAL PRIOR TO CORING.</div><div>4. CONTRACTOR TO COORDINATE INSTALLATION OF ELECTRICAL, COMMUNICATIONS, DATA, SECURITY, AUDIO VISUAL SYSTEMS IN ACCORD WITH PROJECT PROGRAM.</div><div>5. VERIFY EQUIPMENT SPECIFICATIONS, POWER AND INSTALLATION REQUIREMENTS WITH MANUFACTURER TO ENSURE PROPER FIT AND FUNCTION.</div><div>6. VERIFY ADEQUATE REQUIREMENTS OF ELECTRICAL, TELEPHONE AND OTHER EQUIPMENT PROVIDE NON-COMBUSTIBLE BLOODING WITH WALLS AS REQUIRED FOR PROPER EQUIPMENT INSTALLATION.</div><div>7. GIVE ADEQUATE LIGHT SWITCHES AND COVER WITH A SINGLE PLATE.</div><div>8. INDICATED DIMENSIONS ARE TO THE CENTER LINE OF OUTLET OR SWITCH, OR CLUSTER OF OUTLETS OR SWITCHES, UNLESS OTHERWISE NOTED.</div><div>9. VERIFY ADEQUATE REQUIREMENTS OF ELECTRICAL, TELEPHONE AND OTHER EQUIPMENT PROVIDE NON-COMBUSTIBLE BLOODING WITH WALLS AS REQUIRED FOR PROPER EQUIPMENT INSTALLATION.</div><div>10. IDENTIFY DEDICATED OR ISOLATED GROUND ELECTRICAL OUTLETS WITH A RED DOT.</div><div>11. MOUNT STANDARD WALL OUTLETS, SWITCHES AND THERMOSTATS AT HEIGHTS REQUIRED BY TITLE 24 AND ADA REQUIREMENTS, UNLESS OTHERWISE NOTED. WHEN THERMOSTATS AND LIGHT SWITCHES OCCUR TOGETHER, INSTALL BOTH ALIGNED HORIZONTALLY WITH CENTER LINE AT 4'-2" ABOVE FINISHED FLOOR.</div><div>12. IF SPECIFICALLY INDICATED ON PLANS, ALL OUTLET AND/OR SWITCHES ARE TO BE INSTALLED AS DIMENSIONED ANY OVERCROWDINGS BETWEEN A/P AND EXISTING FIELD CONDITIONS TO BE CLARIFIED WITH THE ARCHITECT BEFORE COMMENCEMENT OF WORK.</div><div>13. ALL ELECTRICAL AND TELEPHONE WORK TO BE INSTALLED IN STRICT ACCORDANCE WITH THE REQUIREMENTS OF ALL ELECTRICAL CODES, NATIONAL BOARD OF FIRE UNDERWRITING, UTILITY COMPANIES, TELEPHONE COMPANIES, THE LANDLORD, AND ALL OTHER AUTHORITIES HAVING JURISDICTION.</div><div>14. THE GC SHALL PROVIDE ALL CUTTING AND PATCHING OF FLOORS, WALLS AND CEILING AS REQUIRED.</div><div>15. U.O.N. ALL DEVICES (TELEPHONE, DATA, ELECTRIC, SWITCH) SHALL BE WHITE WITH WHITE COVER PLATES AND ALL EXISTING OUTLETS TO REMAIN TO RECEIVE NEW WHITE DEVICES WITH WHITE COVER PLATES.</div><div>16. SURFACES WITH EXISTING OUTLETS REMOVED SHALL BE PATCHED FLUSH WITH ADJACENT WALL SURFACES.</div><div>17. PROVIDE BREAKER LOOKS FOR A.C. UNITS AND POSITIVE PHONE SYSTEMS.</div><div>18. ALL TELEPHONE OUTLETS SHALL BE PROVIDED WITH TWO (2) NULL STRONG BACK TO THE TELEPHONE EQUIPMENT.</div><div>19. U.O.N. ALL ELECTRICAL, TELEPHONE, AND DATA OUTLETS ARE TO BE MOUNTED 10" A.F.F.</div><div>20. CENTERLINE TO CENTERLINE DIMENSIONS OF ANY OUTLET PAIR OR GROUP SHALL NOT EXCEED 8".</div><div>21. ALL LIGHT FIXTURES SHALL BEAR UL LABELS.</div><div>22. EMERGENCY & EXIT LIGHTS TO BE INSTALLED ON SEPARATE CIRCUIT.</div></div></div><tr><td data-bbox="784 27 1151 1052"><div><div>PLUMBING NOTES</div><div><div>1. WHERE POSSIBLE, UTILITIES SHALL BE CONCEALED WITHIN BUILDING WALLS OR COLUMN CHASES, NOT RUN ALONG WALL FACE, DO NOT STRIKE OUT OF FLOOR AND RUN ON THE FACE OF THE WALL.</div><div>2. ANY AND ALL EXPOSED PIPING OR FITTINGS TO BE STAINLESS STEEL, CHROME PLATED OR ENCLOSED IN A CONCEALED, MOUNTED STAINLESS STEEL CHASE.</div><div>3. DRINKING FOUNTAINS ARE BY MECHANICAL TRADES. VERIFY UTILITY REQUIREMENTS WITH MECHANICAL ENGINEER.</div></div><div><div>FIRE / LIFE SAFETY NOTES</div><div><div>1. FIRE PROTECTION EQUIPMENT AND SERVICE ACCESS MUST BE PROVIDED DURING THE CONSTRUCTION PERIOD AS REQUIRED BY THE COUNTY.</div><div>2. PROVIDE A PORTABLE FIRE EXTINGUISHER WITH A RATING OF NOT LESS THAN 2-A WITH 10-PO TYPICAL, EXTANT TO ALL PORTIONS OF THE PROJECT, AND ADDITIONAL EXTINGUISHERS AS REQUIRED BY THE GOVERNMENT FIELD INSPECTOR OR BUILDING DEPARTMENT INSPECTOR.</div><div>3. ALL FIRE RATED ASSEMBLIES SHALL BE INSTALLED, LABELED, AND INSPECTED IN ACCORDANCE WITH THE APPLICABLE BUILDING CODE WHEN REQUIRED.</div><div>4. PROVIDE EXIT SIGN WITH 1-7275 OVER REQUIRED EXITS, WHERE SHOWN ON DRAWINGS, AND ADDITIONAL SIGNS AS REQUIRED BY BUILDING DEPARTMENT INSPECTOR OR FIRE DEPARTMENT FIELD INSPECTOR. CONNECT EXIT SIGNS TO EMERGENCY POWER CIRCUITS. COMPLY WITH BUILDING CODES.</div><div>5. VERIFY EXISTING LIGHTING OF ONE FOOT CANEAT AT FLOOR LEVEL, COMPLY WITH BUILDING CODES.</div><div>6. EVERY EXIT DOOR SHALL BE OPERABLE FROM THE INSIDE WITHOUT THE USE OF A KEY OR ANY SPECIAL KNOWLEDGE OR EFFORT. SPECIAL LOCKING DEVICES SHALL BE OF AN APPROVED TYPE. ALL NEW DOORS SHALL HAVE APPROVED LEVER HANDLES.</div><div>7. DOORS OPENING INTO REQUIRED 1-HOUR FIRE-RATED CORRIDORS SHALL BE PROTECTED WITH A SHOWN ON DRAWING 1-HOUR APPROVED 1-HOUR APPROVED RATING AND SHALL BE SELF-CLOSING.</div><div>8. 24-HOUR DOOR JAMBS TO BE TIGHT-FITTING, SMOKE AND DRAFT CONTROLLED.</div><div>9. EXIT DOORS SHALL SWING IN THE DIRECTION OF TRAVEL WHEN SERVING 30 OR MORE PERSONS.</div><div>10. PROVIDE FIRE DAMPERS ON DOORS WHERE AIR DUCTS PENETRATE FIRE-RATED WALLS OR CHASES.</div><div>11. STORAGE, DISPENSING OR USE OF ANY FLAMMABLE OR COMBUSTIBLE LIQUIDS, FLAMMABLE GAS AND HAZARDOUS SUBSTANCES SHALL COMPLY WITH UNIFORM FIRE CODE REGULATIONS.</div><div>12. EXTEND OR MODIFY EXISTING FIRE / LIFE SAFETY SYSTEM AS REQUIRED TO PROVIDE AN APPROVED FIRE / LIFE SAFETY SYSTEM FOR FLOORING AND ZONE APPROVAL. SUBMIT PLANS TO FIRE DEPARTMENT WITH COMPLETE DESCRIPTION OF SEQUENCE OF OPERATION, AND OBTAIN APPROVAL PRIOR TO INSTALLATION.</div><div>13. LOCATE THE CENTER OF FIRE ALARM PULSING DEVICES 4" ABOVE THE LEVEL OF THE FLOOR, WORKING PLATFORM, GROUND SURFACE OR SIDEWALK.</div><div>14. EMERGENCY WARNERS BY SIREN SHALL ACTIVATE A HORN OF WARNING THE HEARING IMPAIRED. FLASHING VIBES SHALL HAVE A FREQUENCY OF NOT MORE THAN 60 FLASHES PER MINUTE.</div><div>15. THE FIRE PROTECTION DOCUMENTATION CONTAINED WITHIN THESE DRAWINGS HAVE BEEN PREPARED TO PERFORMANCE SPECIFICATION LEVEL OF EQUIPMENT FOR GENERAL DESIGN AND FIRE PROTECTION CODE COMPLIANCE (GENERAL). THE GENERAL CONTRACTOR TO OBTAIN A LICENSED FIRE DESIGN ENGINEER FROM THE STATE OF CONNECTICUT FOR THE PROJECT. THE DESIGN ENGINEER SHALL PROVIDE A P.F. SHOP DRAWINGS, STAMP / SIGN AND P.F. SHOP DRAWINGS AND SUBMIT S&P SHOP DRAWINGS FOR PERMIT.</div></div><div><div>STRUCTURAL NOTES</div><div><div>1. THE GENERAL CONTRACTOR SHALL PROVIDE COLD-FORMED METAL FRAMING SHOP DRAWINGS STAMPED BY A PROFESSIONAL ENGINEER.</div><div>2. ENGINEERING RESPONSIBILITY: PREPARATION OF SHOP DRAWINGS, DESIGN CALCULATIONS, AND OTHER STRUCTURAL DATA BY A QUALIFIED PROFESSIONAL ENGINEER.</div><div>3. PROFESSIONAL ENGINEER QUALIFICATION: A PROFESSIONAL ENGINEER WHO IS (1) FULLY QUALIFIED TO PRACTICE IN JURISDICTION WHERE PROJECT IS LOCATED AND WHO IS EXPERIENCED IN PRACTICES OF PROFESSIONAL ENGINEERING OF THE TYPE INDICATED. ENGINEERING SERVICES ARE OFFERED AS THOSE PROVIDED FOR THE PROJECT IN DESIGN, DESIGN AND DETAIL.</div><div>4. SHOP DRAWINGS:<div><div>A. INCLUDE LAYOUT, SPACINGS, SIZES, THICKNESSES, AND TYPES OF COLD-FORMED STEEL FRAMING, FABRICATION, AND FASTENINGS AND JOINTS AND CRANE DETAILS, INCLUDING MECHANICAL FASTENINGS.</div><div>B. INDICATE REINFORCING CHANNELS, OPENING FRAMING, SUPPLEMENTAL FRAMING, STRAPPING, BRACING, BRIDGING, SPLICES, ACCESSORIES, CONNECTION DETAILS, AND ATTACHMENT TO ADJACENT WORK.</div></div></div></div></div><tr><td data-bbox="1151 27 1516 1052"><div><div>MILLWORK NOTES</div><div><div>1. REFER TO FINISH SCHEDULE FOR FINISHES.</div><div>2. MILLWORK CONTRACTOR TO SITE VERIFY ALL DIMENSIONS PRIOR TO CONSTRUCTION.</div><div>3. GENERAL CONTRACTOR SHALL REFER TO CASEWORK & COUNTERTOP SPECIFICATIONS.</div><div>4. CUSTOMER SEER OF ALL SERVING COUNTERTOPS SHALL NOT EXCEED 1/8" ABOVE FINISH FLOOR.</div><div>5. G.C. IS RESPONSIBLE FOR SUPPLYING & INSTALLING ALL SITE REQUIREMENTS (IN WALL, BLOODING, ETC.) FOR MILLWORK. COORDINATE ALL REQUIREMENTS WITH VENDORS.</div><div>6. SHOP DRAWINGS MUST BE SUBMITTED AND APPROVED BY ARCHITECT & TENANT'S CONSTRUCTION MANAGER FOR APPROVAL PRIOR TO FABRICATION WHEN REQUIRED.</div><div>7. ALL MILLWORK IS TO CONFORM TO AIA/NAAMC.A.C. PREMIUM STANDARDS.</div><div>8. G.C. IS RESPONSIBLE FOR THE COORDINATION OF THE INSTALLATION PROCESS OF ALL MILLWORK, INCLUDING TOUCH-UP OF ANY DAMAGE AND FINAL CLEANING AFTER INSTALLATION.</div><div>9. MILLWORK VENDOR TO COORDINATE WITH OTHER TRADES AND PROVIDE CONCEALED GROUNDS & OR FLOORING AS REQUIRED. PROVIDE CUTOUTS FOR OUTLETS AND EQUIPMENT AS REQUIRED. VERIFY ALL FABRICATED PARTS TO FABRICATION.</div><div>10. G.C. TO PROVIDE ADDITIONAL CUTOUTS AS REQUIRED IN VENDOR SUPPLIED MILLWORK. ALL MODIFICATIONS TO BE PERFORMED BY A QUALIFIED PART CARPENTER. ALL CUTS TO BE PLACED TO MINIMIZE VISIBILITY. NO ADDITIONAL MODIFICATION TO MILLWORK WILL BE ALLOWED WITHOUT PRIOR APPROVAL FROM TENANT'S PROJECT MANAGER.</div><div>11. ALL CUTOUTS IN UNFINISHED STONE SHALL BE SPACED A MINIMUM OF 2" APART AND/OR PER MANUFACTURER'S SPECIFICATIONS.</div><div>12. FINISHED VENEERED WOOD SHALL BE FREE FROM KNOTS, SHAKES AND OTHER DEFECTS AFFECTING OVERALL QUALITY OR APPEARANCE, & SHALL BE CAREFULLY SELECTED FOR GRAIN & COLOR FOR MATCHED VARIATIONS AT JOINTS BETWEEN VENEERS.</div><div>13. ALL MILLWORK IS TO BE LABELLED OUT IN A TRADE SHOP ONLY. NO FIELD CUTTING WILL BE ALLOWED. ALSO, NO FIELD FINISHING MORE THAN 18" FROM TOP-UPS OF MILLWORK WILL BE PERMITTED.</div><div>14. ALL MILLWORK HARDWARE TO BE FURNISHED & INSTALLED BY MILLWORK VENDOR.</div><div>15. MILLWORK VENDOR TO FINISH & INSTALL RUBBER SURFACES ON ALL DOORS AND DRAWERS.</div><div>16. WOOD BLOCKING SHALL BE PRE-TREATED IN ACCORDANCE WITH APPLICABLE CODE REQUIREMENTS. LENGTHS OF WALL BLOCKING ARE TYPICAL, ALWAYS EXTENDING TO THE MOST STUD IN EACH DIRECTION.</div><div>17. ALL SURFACES TO BE FINISHED, NO EXPOSED UNFINISHED SURFACES WILL BE ACCEPTED.</div><div>18. U.O.N. ALL INTERIOR KNEEWALL SURFACES TO RECEIVE A WHITE CLEANABLE TRIP FINISH.</div><div>19. U.O.N. ALL CABINET INTERIORS TO RECEIVE A WHITE PLASTIC LAMINATE FINISH.</div><div>20. U.O.N. THE UNDERSIDE OF ALL COUNTERTOP SUBSTRATES TO RECEIVE A WHITE PLASTIC LAMINATE FINISH.</div><div>21. MILLWORK CONTRACTOR TO INSURE ALL SPECIFIED EQUIPMENT FITS INTO COUNTER AS NOTED. CHECK ALL MANUFACTURER'S SPECIFICATIONS PRIOR TO FABRICATION.</div><div>22. MILLWORK CONTRACTOR TO INSURE COUNTER FITS BRUSH WITH SURROUNDING SITE AND FINISH.</div><div>23. COORDINATE ALL CUTOUTS A/P FINAL LOCATIONS WITH KITCHEN EQUIPMENT CONTRACTOR, TYP.</div><div>24. 1/2" X 1/2" STAINLESS STEEL CORNER GUARDS ALL EXPOSED OUTSIDE CORNERS AT MILLWORK, TYP.</div><div>25. 1/2" X 1/2" STAINLESS STEEL BOTTOM EDGING AT ALL EXPOSED LAMINATE TOP-EDGES AT MILLWORK, TYP.</div><div>26. FROD EQUIPMENT AND MILLWORK TO BE SEALED, USING APPROVED CLEAR SILICONE SEALANT, TO FLOORS, WALLS AND COUNTER TOPS AS REQUIRED.</div><div>27. ALL ENGINEERED STONE BACKSPLASHES AND COUNTERTOPS SHALL BE SEALED TO ADJACENT WALLS WITH CLEAR SILICONE SEALANT AS REQUIRED. GAPS BETWEEN ENGINEERED STONE AND WALL SURFACES SHALL NOT EXCEED 1/8" MAX.</div><div>28. ANY SUPPORT LEGS INDICATED ON THE DRAWINGS ARE SUGGESTED PLACEMENT ONLY. QUANTITY OF SUPPORT LEGS SHALL BE DETERMINED BY THE MILLWORK CONTRACTOR AND ICE.</div><div>29. INSTALLATION OF EQUIPMENT AND MILLWORK TO INCLUDE PROPER SPACING TO ALLOW FOR CLEANING.</div><div>30. ALL STAINLESS STEEL, ADJUSTABLE LEGS SHALL HAVE FEET MECHANICALLY FASTENED TO THE FLOOR.</div><div>31. MAX SPAN BETWEEN LOW WALL SUPPORTS AND/OR STAINLESS STEEL LEGS SHALL NOT EXCEED 4'-0" MAX.</div><div>32. MILLWORK CONTRACTOR TO LASE WITH ICE TO COORDINATE ADEQUATE MILLWORK REINFORCEMENT TO SUPPORT SPECIFIC EQUIPMENT AT FULL CAPACITY.</div><div>33. WHERE COUNTERTOP SUBSTRATE INTERFERES WITH UNDERCOUNTER EQUIPMENT CLEARANCES, STEEL PLAT BARS SHALL BE USED TO SUPPORT THE COUNTERTOP AS NEEDED.</div><div>34. ALL SEAM LOCATIONS SHALL BE SUPPORTED BY LOW WALL AND/OR STAINLESS STEEL LEG SUPPORT WITH STEEL CHANNEL RUNNING BACK TO MAIN LOW WALL SUPPORT.</div><div>35. AFTER WORK IS COMPLETED ALL MILLWORK AND/OR EQUIPMENT WILL BE CLEANED AND SANITIZED BEFORE OPERATIONS COMMENCE.</div><div>36. ALL PLYWOOD SUBSTRATES SHALL BE MAXIMUM GRADE PLYWOOD OR APPROVED EQUAL.</div><div>37. G.C. SHALL FURNISH AND INSTALL ACCESS PANELS IN MILLWORK WHERE INDICATED ON DRAWINGS. REQUIRED BY THE NATURE OF THE PROJECT, OR REQUIRED TO SERVICE DEVICES WITHIN THE MILLWORK. THE ACCESS PANELS SHALL BE OF SUFFICIENT SIZE SO THAT ALL EQUIPMENT WILL BE COMPLETELY SERVICEABLE. PANELS SHALL BE FINISHED TO MATCH THE SURFACE IN WHICH THEY ARE LOCATED.</div><div>38. MILLWORK CONTRACTOR TO PROVIDE ADEQUATE VENTILATION IN EQUIPMENT FOR REQUIRED EQUIPMENT. CHECK ALL MANUFACTURER'S SPECIFICATIONS PRIOR TO FABRICATION.</div><div>39. U.O.N. LOUVERED MILLWORK DOORS SHALL HAVE TOP VENTILATION SLOTS ROUTED INTO THE ENTIRE DOOR & 1/2" O.C. VENTILATION SLOTS SHALL STOP 1/8" FROM ALL SIDES. INSIDE OF SLOT TO BE PAINTED BLACK WITH WATERPROOF SEALANT.</div></div></div><tr><td data-bbox="1516 27 1593 1052"><div><div>TORRINGTON SAVINGS BANK</div><div>TORRINGTON SAVINGS BANK 635 MAIN ST., TORRINGTON, CT 06790</div></div></td></tr></td></tr></div></div></td></tr></div>	<div><div>PLUMBING NOTES</div><div><div>1. WHERE POSSIBLE, UTILITIES SHALL BE CONCEALED WITHIN BUILDING WALLS OR COLUMN CHASES, NOT RUN ALONG WALL FACE, DO NOT STRIKE OUT OF FLOOR AND RUN ON THE FACE OF THE WALL.</div><div>2. ANY AND ALL EXPOSED PIPING OR FITTINGS TO BE STAINLESS STEEL, CHROME PLATED OR ENCLOSED IN A CONCEALED, MOUNTED STAINLESS STEEL CHASE.</div><div>3. DRINKING FOUNTAINS ARE BY MECHANICAL TRADES. VERIFY UTILITY REQUIREMENTS WITH MECHANICAL ENGINEER.</div></div><div><div>FIRE / LIFE SAFETY NOTES</div><div><div>1. FIRE PROTECTION EQUIPMENT AND SERVICE ACCESS MUST BE PROVIDED DURING THE CONSTRUCTION PERIOD AS REQUIRED BY THE COUNTY.</div><div>2. PROVIDE A PORTABLE FIRE EXTINGUISHER WITH A RATING OF NOT LESS THAN 2-A WITH 10-PO TYPICAL, EXTANT TO ALL PORTIONS OF THE PROJECT, AND ADDITIONAL EXTINGUISHERS AS REQUIRED BY THE GOVERNMENT FIELD INSPECTOR OR BUILDING DEPARTMENT INSPECTOR.</div><div>3. ALL FIRE RATED ASSEMBLIES SHALL BE INSTALLED, LABELED, AND INSPECTED IN ACCORDANCE WITH THE APPLICABLE BUILDING CODE WHEN REQUIRED.</div><div>4. PROVIDE EXIT SIGN WITH 1-7275 OVER REQUIRED EXITS, WHERE SHOWN ON DRAWINGS, AND ADDITIONAL SIGNS AS REQUIRED BY BUILDING DEPARTMENT INSPECTOR OR FIRE DEPARTMENT FIELD INSPECTOR. CONNECT EXIT SIGNS TO EMERGENCY POWER CIRCUITS. COMPLY WITH BUILDING CODES.</div><div>5. VERIFY EXISTING LIGHTING OF ONE FOOT CANEAT AT FLOOR LEVEL, COMPLY WITH BUILDING CODES.</div><div>6. EVERY EXIT DOOR SHALL BE OPERABLE FROM THE INSIDE WITHOUT THE USE OF A KEY OR ANY SPECIAL KNOWLEDGE OR EFFORT. SPECIAL LOCKING DEVICES SHALL BE OF AN APPROVED TYPE. ALL NEW DOORS SHALL HAVE APPROVED LEVER HANDLES.</div><div>7. DOORS OPENING INTO REQUIRED 1-HOUR FIRE-RATED CORRIDORS SHALL BE PROTECTED WITH A SHOWN ON DRAWING 1-HOUR APPROVED 1-HOUR APPROVED RATING AND SHALL BE SELF-CLOSING.</div><div>8. 24-HOUR DOOR JAMBS TO BE TIGHT-FITTING, SMOKE AND DRAFT CONTROLLED.</div><div>9. EXIT DOORS SHALL SWING IN THE DIRECTION OF TRAVEL WHEN SERVING 30 OR MORE PERSONS.</div><div>10. PROVIDE FIRE DAMPERS ON DOORS WHERE AIR DUCTS PENETRATE FIRE-RATED WALLS OR CHASES.</div><div>11. STORAGE, DISPENSING OR USE OF ANY FLAMMABLE OR COMBUSTIBLE LIQUIDS, FLAMMABLE GAS AND HAZARDOUS SUBSTANCES SHALL COMPLY WITH UNIFORM FIRE CODE REGULATIONS.</div><div>12. EXTEND OR MODIFY EXISTING FIRE / LIFE SAFETY SYSTEM AS REQUIRED TO PROVIDE AN APPROVED FIRE / LIFE SAFETY SYSTEM FOR FLOORING AND ZONE APPROVAL. SUBMIT PLANS TO FIRE DEPARTMENT WITH COMPLETE DESCRIPTION OF SEQUENCE OF OPERATION, AND OBTAIN APPROVAL PRIOR TO INSTALLATION.</div><div>13. LOCATE THE CENTER OF FIRE ALARM PULSING DEVICES 4" ABOVE THE LEVEL OF THE FLOOR, WORKING PLATFORM, GROUND SURFACE OR SIDEWALK.</div><div>14. EMERGENCY WARNERS BY SIREN SHALL ACTIVATE A HORN OF WARNING THE HEARING IMPAIRED. FLASHING VIBES SHALL HAVE A FREQUENCY OF NOT MORE THAN 60 FLASHES PER MINUTE.</div><div>15. THE FIRE PROTECTION DOCUMENTATION CONTAINED WITHIN THESE DRAWINGS HAVE BEEN PREPARED TO PERFORMANCE SPECIFICATION LEVEL OF EQUIPMENT FOR GENERAL DESIGN AND FIRE PROTECTION CODE COMPLIANCE (GENERAL). THE GENERAL CONTRACTOR TO OBTAIN A LICENSED FIRE DESIGN ENGINEER FROM THE STATE OF CONNECTICUT FOR THE PROJECT. THE DESIGN ENGINEER SHALL PROVIDE A P.F. SHOP DRAWINGS, STAMP / SIGN AND P.F. SHOP DRAWINGS AND SUBMIT S&P SHOP DRAWINGS FOR PERMIT.</div></div><div><div>STRUCTURAL NOTES</div><div><div>1. THE GENERAL CONTRACTOR SHALL PROVIDE COLD-FORMED METAL FRAMING SHOP DRAWINGS STAMPED BY A PROFESSIONAL ENGINEER.</div><div>2. ENGINEERING RESPONSIBILITY: PREPARATION OF SHOP DRAWINGS, DESIGN CALCULATIONS, AND OTHER STRUCTURAL DATA BY A QUALIFIED PROFESSIONAL ENGINEER.</div><div>3. PROFESSIONAL ENGINEER QUALIFICATION: A PROFESSIONAL ENGINEER WHO IS (1) FULLY QUALIFIED TO PRACTICE IN JURISDICTION WHERE PROJECT IS LOCATED AND WHO IS EXPERIENCED IN PRACTICES OF PROFESSIONAL ENGINEERING OF THE TYPE INDICATED. ENGINEERING SERVICES ARE OFFERED AS THOSE PROVIDED FOR THE PROJECT IN DESIGN, DESIGN AND DETAIL.</div><div>4. SHOP DRAWINGS:<div><div>A. INCLUDE LAYOUT, SPACINGS, SIZES, THICKNESSES, AND TYPES OF COLD-FORMED STEEL FRAMING, FABRICATION, AND FASTENINGS AND JOINTS AND CRANE DETAILS, INCLUDING MECHANICAL FASTENINGS.</div><div>B. INDICATE REINFORCING CHANNELS, OPENING FRAMING, SUPPLEMENTAL FRAMING, STRAPPING, BRACING, BRIDGING, SPLICES, ACCESSORIES, CONNECTION DETAILS, AND ATTACHMENT TO ADJACENT WORK.</div></div></div></div></div><tr><td data-bbox="1151 27 1516 1052"><div><div>MILLWORK NOTES</div><div><div>1. REFER TO FINISH SCHEDULE FOR FINISHES.</div><div>2. MILLWORK CONTRACTOR TO SITE VERIFY ALL DIMENSIONS PRIOR TO CONSTRUCTION.</div><div>3. GENERAL CONTRACTOR SHALL REFER TO CASEWORK & COUNTERTOP SPECIFICATIONS.</div><div>4. CUSTOMER SEER OF ALL SERVING COUNTERTOPS SHALL NOT EXCEED 1/8" ABOVE FINISH FLOOR.</div><div>5. G.C. IS RESPONSIBLE FOR SUPPLYING & INSTALLING ALL SITE REQUIREMENTS (IN WALL, BLOODING, ETC.) FOR MILLWORK. COORDINATE ALL REQUIREMENTS WITH VENDORS.</div><div>6. SHOP DRAWINGS MUST BE SUBMITTED AND APPROVED BY ARCHITECT & TENANT'S CONSTRUCTION MANAGER FOR APPROVAL PRIOR TO FABRICATION WHEN REQUIRED.</div><div>7. ALL MILLWORK IS TO CONFORM TO AIA/NAAMC.A.C. PREMIUM STANDARDS.</div><div>8. G.C. IS RESPONSIBLE FOR THE COORDINATION OF THE INSTALLATION PROCESS OF ALL MILLWORK, INCLUDING TOUCH-UP OF ANY DAMAGE AND FINAL CLEANING AFTER INSTALLATION.</div><div>9. MILLWORK VENDOR TO COORDINATE WITH OTHER TRADES AND PROVIDE CONCEALED GROUNDS & OR FLOORING AS REQUIRED. PROVIDE CUTOUTS FOR OUTLETS AND EQUIPMENT AS REQUIRED. VERIFY ALL FABRICATED PARTS TO FABRICATION.</div><div>10. G.C. TO PROVIDE ADDITIONAL CUTOUTS AS REQUIRED IN VENDOR SUPPLIED MILLWORK. ALL MODIFICATIONS TO BE PERFORMED BY A QUALIFIED PART CARPENTER. ALL CUTS TO BE PLACED TO MINIMIZE VISIBILITY. NO ADDITIONAL MODIFICATION TO MILLWORK WILL BE ALLOWED WITHOUT PRIOR APPROVAL FROM TENANT'S PROJECT MANAGER.</div><div>11. ALL CUTOUTS IN UNFINISHED STONE SHALL BE SPACED A MINIMUM OF 2" APART AND/OR PER MANUFACTURER'S SPECIFICATIONS.</div><div>12. FINISHED VENEERED WOOD SHALL BE FREE FROM KNOTS, SHAKES AND OTHER DEFECTS AFFECTING OVERALL QUALITY OR APPEARANCE, & SHALL BE CAREFULLY SELECTED FOR GRAIN & COLOR FOR MATCHED VARIATIONS AT JOINTS BETWEEN VENEERS.</div><div>13. ALL MILLWORK IS TO BE LABELLED OUT IN A TRADE SHOP ONLY. NO FIELD CUTTING WILL BE ALLOWED. ALSO, NO FIELD FINISHING MORE THAN 18" FROM TOP-UPS OF MILLWORK WILL BE PERMITTED.</div><div>14. ALL MILLWORK HARDWARE TO BE FURNISHED & INSTALLED BY MILLWORK VENDOR.</div><div>15. MILLWORK VENDOR TO FINISH & INSTALL RUBBER SURFACES ON ALL DOORS AND DRAWERS.</div><div>16. WOOD BLOCKING SHALL BE PRE-TREATED IN ACCORDANCE WITH APPLICABLE CODE REQUIREMENTS. LENGTHS OF WALL BLOCKING ARE TYPICAL, ALWAYS EXTENDING TO THE MOST STUD IN EACH DIRECTION.</div><div>17. ALL SURFACES TO BE FINISHED, NO EXPOSED UNFINISHED SURFACES WILL BE ACCEPTED.</div><div>18. U.O.N. ALL INTERIOR KNEEWALL SURFACES TO RECEIVE A WHITE CLEANABLE TRIP FINISH.</div><div>19. U.O.N. ALL CABINET INTERIORS TO RECEIVE A WHITE PLASTIC LAMINATE FINISH.</div><div>20. U.O.N. THE UNDERSIDE OF ALL COUNTERTOP SUBSTRATES TO RECEIVE A WHITE PLASTIC LAMINATE FINISH.</div><div>21. MILLWORK CONTRACTOR TO INSURE ALL SPECIFIED EQUIPMENT FITS INTO COUNTER AS NOTED. CHECK ALL MANUFACTURER'S SPECIFICATIONS PRIOR TO FABRICATION.</div><div>22. MILLWORK CONTRACTOR TO INSURE COUNTER FITS BRUSH WITH SURROUNDING SITE AND FINISH.</div><div>23. COORDINATE ALL CUTOUTS A/P FINAL LOCATIONS WITH KITCHEN EQUIPMENT CONTRACTOR, TYP.</div><div>24. 1/2" X 1/2" STAINLESS STEEL CORNER GUARDS ALL EXPOSED OUTSIDE CORNERS AT MILLWORK, TYP.</div><div>25. 1/2" X 1/2" STAINLESS STEEL BOTTOM EDGING AT ALL EXPOSED LAMINATE TOP-EDGES AT MILLWORK, TYP.</div><div>26. FROD EQUIPMENT AND MILLWORK TO BE SEALED, USING APPROVED CLEAR SILICONE SEALANT, TO FLOORS, WALLS AND COUNTER TOPS AS REQUIRED.</div><div>27. ALL ENGINEERED STONE BACKSPLASHES AND COUNTERTOPS SHALL BE SEALED TO ADJACENT WALLS WITH CLEAR SILICONE SEALANT AS REQUIRED. GAPS BETWEEN ENGINEERED STONE AND WALL SURFACES SHALL NOT EXCEED 1/8" MAX.</div><div>28. ANY SUPPORT LEGS INDICATED ON THE DRAWINGS ARE SUGGESTED PLACEMENT ONLY. QUANTITY OF SUPPORT LEGS SHALL BE DETERMINED BY THE MILLWORK CONTRACTOR AND ICE.</div><div>29. INSTALLATION OF EQUIPMENT AND MILLWORK TO INCLUDE PROPER SPACING TO ALLOW FOR CLEANING.</div><div>30. ALL STAINLESS STEEL, ADJUSTABLE LEGS SHALL HAVE FEET MECHANICALLY FASTENED TO THE FLOOR.</div><div>31. MAX SPAN BETWEEN LOW WALL SUPPORTS AND/OR STAINLESS STEEL LEGS SHALL NOT EXCEED 4'-0" MAX.</div><div>32. MILLWORK CONTRACTOR TO LASE WITH ICE TO COORDINATE ADEQUATE MILLWORK REINFORCEMENT TO SUPPORT SPECIFIC EQUIPMENT AT FULL CAPACITY.</div><div>33. WHERE COUNTERTOP SUBSTRATE INTERFERES WITH UNDERCOUNTER EQUIPMENT CLEARANCES, STEEL PLAT BARS SHALL BE USED TO SUPPORT THE COUNTERTOP AS NEEDED.</div><div>34. ALL SEAM LOCATIONS SHALL BE SUPPORTED BY LOW WALL AND/OR STAINLESS STEEL LEG SUPPORT WITH STEEL CHANNEL RUNNING BACK TO MAIN LOW WALL SUPPORT.</div><div>35. AFTER WORK IS COMPLETED ALL MILLWORK AND/OR EQUIPMENT WILL BE CLEANED AND SANITIZED BEFORE OPERATIONS COMMENCE.</div><div>36. ALL PLYWOOD SUBSTRATES SHALL BE MAXIMUM GRADE PLYWOOD OR APPROVED EQUAL.</div><div>37. G.C. SHALL FURNISH AND INSTALL ACCESS PANELS IN MILLWORK WHERE INDICATED ON DRAWINGS. REQUIRED BY THE NATURE OF THE PROJECT, OR REQUIRED TO SERVICE DEVICES WITHIN THE MILLWORK. THE ACCESS PANELS SHALL BE OF SUFFICIENT SIZE SO THAT ALL EQUIPMENT WILL BE COMPLETELY SERVICEABLE. PANELS SHALL BE FINISHED TO MATCH THE SURFACE IN WHICH THEY ARE LOCATED.</div><div>38. MILLWORK CONTRACTOR TO PROVIDE ADEQUATE VENTILATION IN EQUIPMENT FOR REQUIRED EQUIPMENT. CHECK ALL MANUFACTURER'S SPECIFICATIONS PRIOR TO FABRICATION.</div><div>39. U.O.N. LOUVERED MILLWORK DOORS SHALL HAVE TOP VENTILATION SLOTS ROUTED INTO THE ENTIRE DOOR & 1/2" O.C. VENTILATION SLOTS SHALL STOP 1/8" FROM ALL SIDES. INSIDE OF SLOT TO BE PAINTED BLACK WITH WATERPROOF SEALANT.</div></div></div><tr><td data-bbox="1516 27 1593 1052"><div><div>TORRINGTON SAVINGS BANK</div><div>TORRINGTON SAVINGS BANK 635 MAIN ST., TORRINGTON, CT 06790</div></div></td></tr></td></tr></div></div>	<div><div>MILLWORK NOTES</div><div><div>1. REFER TO FINISH SCHEDULE FOR FINISHES.</div><div>2. MILLWORK CONTRACTOR TO SITE VERIFY ALL DIMENSIONS PRIOR TO CONSTRUCTION.</div><div>3. GENERAL CONTRACTOR SHALL REFER TO CASEWORK & COUNTERTOP SPECIFICATIONS.</div><div>4. CUSTOMER SEER OF ALL SERVING COUNTERTOPS SHALL NOT EXCEED 1/8" ABOVE FINISH FLOOR.</div><div>5. G.C. IS RESPONSIBLE FOR SUPPLYING & INSTALLING ALL SITE REQUIREMENTS (IN WALL, BLOODING, ETC.) FOR MILLWORK. COORDINATE ALL REQUIREMENTS WITH VENDORS.</div><div>6. SHOP DRAWINGS MUST BE SUBMITTED AND APPROVED BY ARCHITECT & TENANT'S CONSTRUCTION MANAGER FOR APPROVAL PRIOR TO FABRICATION WHEN REQUIRED.</div><div>7. ALL MILLWORK IS TO CONFORM TO AIA/NAAMC.A.C. PREMIUM STANDARDS.</div><div>8. G.C. IS RESPONSIBLE FOR THE COORDINATION OF THE INSTALLATION PROCESS OF ALL MILLWORK, INCLUDING TOUCH-UP OF ANY DAMAGE AND FINAL CLEANING AFTER INSTALLATION.</div><div>9. MILLWORK VENDOR TO COORDINATE WITH OTHER TRADES AND PROVIDE CONCEALED GROUNDS & OR FLOORING AS REQUIRED. PROVIDE CUTOUTS FOR OUTLETS AND EQUIPMENT AS REQUIRED. VERIFY ALL FABRICATED PARTS TO FABRICATION.</div><div>10. G.C. TO PROVIDE ADDITIONAL CUTOUTS AS REQUIRED IN VENDOR SUPPLIED MILLWORK. ALL MODIFICATIONS TO BE PERFORMED BY A QUALIFIED PART CARPENTER. ALL CUTS TO BE PLACED TO MINIMIZE VISIBILITY. NO ADDITIONAL MODIFICATION TO MILLWORK WILL BE ALLOWED WITHOUT PRIOR APPROVAL FROM TENANT'S PROJECT MANAGER.</div><div>11. ALL CUTOUTS IN UNFINISHED STONE SHALL BE SPACED A MINIMUM OF 2" APART AND/OR PER MANUFACTURER'S SPECIFICATIONS.</div><div>12. FINISHED VENEERED WOOD SHALL BE FREE FROM KNOTS, SHAKES AND OTHER DEFECTS AFFECTING OVERALL QUALITY OR APPEARANCE, & SHALL BE CAREFULLY SELECTED FOR GRAIN & COLOR FOR MATCHED VARIATIONS AT JOINTS BETWEEN VENEERS.</div><div>13. ALL MILLWORK IS TO BE LABELLED OUT IN A TRADE SHOP ONLY. NO FIELD CUTTING WILL BE ALLOWED. ALSO, NO FIELD FINISHING MORE THAN 18" FROM TOP-UPS OF MILLWORK WILL BE PERMITTED.</div><div>14. ALL MILLWORK HARDWARE TO BE FURNISHED & INSTALLED BY MILLWORK VENDOR.</div><div>15. MILLWORK VENDOR TO FINISH & INSTALL RUBBER SURFACES ON ALL DOORS AND DRAWERS.</div><div>16. WOOD BLOCKING SHALL BE PRE-TREATED IN ACCORDANCE WITH APPLICABLE CODE REQUIREMENTS. LENGTHS OF WALL BLOCKING ARE TYPICAL, ALWAYS EXTENDING TO THE MOST STUD IN EACH DIRECTION.</div><div>17. ALL SURFACES TO BE FINISHED, NO EXPOSED UNFINISHED SURFACES WILL BE ACCEPTED.</div><div>18. U.O.N. ALL INTERIOR KNEEWALL SURFACES TO RECEIVE A WHITE CLEANABLE TRIP FINISH.</div><div>19. U.O.N. ALL CABINET INTERIORS TO RECEIVE A WHITE PLASTIC LAMINATE FINISH.</div><div>20. U.O.N. THE UNDERSIDE OF ALL COUNTERTOP SUBSTRATES TO RECEIVE A WHITE PLASTIC LAMINATE FINISH.</div><div>21. MILLWORK CONTRACTOR TO INSURE ALL SPECIFIED EQUIPMENT FITS INTO COUNTER AS NOTED. CHECK ALL MANUFACTURER'S SPECIFICATIONS PRIOR TO FABRICATION.</div><div>22. MILLWORK CONTRACTOR TO INSURE COUNTER FITS BRUSH WITH SURROUNDING SITE AND FINISH.</div><div>23. COORDINATE ALL CUTOUTS A/P FINAL LOCATIONS WITH KITCHEN EQUIPMENT CONTRACTOR, TYP.</div><div>24. 1/2" X 1/2" STAINLESS STEEL CORNER GUARDS ALL EXPOSED OUTSIDE CORNERS AT MILLWORK, TYP.</div><div>25. 1/2" X 1/2" STAINLESS STEEL BOTTOM EDGING AT ALL EXPOSED LAMINATE TOP-EDGES AT MILLWORK, TYP.</div><div>26. FROD EQUIPMENT AND MILLWORK TO BE SEALED, USING APPROVED CLEAR SILICONE SEALANT, TO FLOORS, WALLS AND COUNTER TOPS AS REQUIRED.</div><div>27. ALL ENGINEERED STONE BACKSPLASHES AND COUNTERTOPS SHALL BE SEALED TO ADJACENT WALLS WITH CLEAR SILICONE SEALANT AS REQUIRED. GAPS BETWEEN ENGINEERED STONE AND WALL SURFACES SHALL NOT EXCEED 1/8" MAX.</div><div>28. ANY SUPPORT LEGS INDICATED ON THE DRAWINGS ARE SUGGESTED PLACEMENT ONLY. QUANTITY OF SUPPORT LEGS SHALL BE DETERMINED BY THE MILLWORK CONTRACTOR AND ICE.</div><div>29. INSTALLATION OF EQUIPMENT AND MILLWORK TO INCLUDE PROPER SPACING TO ALLOW FOR CLEANING.</div><div>30. ALL STAINLESS STEEL, ADJUSTABLE LEGS SHALL HAVE FEET MECHANICALLY FASTENED TO THE FLOOR.</div><div>31. MAX SPAN BETWEEN LOW WALL SUPPORTS AND/OR STAINLESS STEEL LEGS SHALL NOT EXCEED 4'-0" MAX.</div><div>32. MILLWORK CONTRACTOR TO LASE WITH ICE TO COORDINATE ADEQUATE MILLWORK REINFORCEMENT TO SUPPORT SPECIFIC EQUIPMENT AT FULL CAPACITY.</div><div>33. WHERE COUNTERTOP SUBSTRATE INTERFERES WITH UNDERCOUNTER EQUIPMENT CLEARANCES, STEEL PLAT BARS SHALL BE USED TO SUPPORT THE COUNTERTOP AS NEEDED.</div><div>34. ALL SEAM LOCATIONS SHALL BE SUPPORTED BY LOW WALL AND/OR STAINLESS STEEL LEG SUPPORT WITH STEEL CHANNEL RUNNING BACK TO MAIN LOW WALL SUPPORT.</div><div>35. AFTER WORK IS COMPLETED ALL MILLWORK AND/OR EQUIPMENT WILL BE CLEANED AND SANITIZED BEFORE OPERATIONS COMMENCE.</div><div>36. ALL PLYWOOD SUBSTRATES SHALL BE MAXIMUM GRADE PLYWOOD OR APPROVED EQUAL.</div><div>37. G.C. SHALL FURNISH AND INSTALL ACCESS PANELS IN MILLWORK WHERE INDICATED ON DRAWINGS. REQUIRED BY THE NATURE OF THE PROJECT, OR REQUIRED TO SERVICE DEVICES WITHIN THE MILLWORK. THE ACCESS PANELS SHALL BE OF SUFFICIENT SIZE SO THAT ALL EQUIPMENT WILL BE COMPLETELY SERVICEABLE. PANELS SHALL BE FINISHED TO MATCH THE SURFACE IN WHICH THEY ARE LOCATED.</div><div>38. MILLWORK CONTRACTOR TO PROVIDE ADEQUATE VENTILATION IN EQUIPMENT FOR REQUIRED EQUIPMENT. CHECK ALL MANUFACTURER'S SPECIFICATIONS PRIOR TO FABRICATION.</div><div>39. U.O.N. LOUVERED MILLWORK DOORS SHALL HAVE TOP VENTILATION SLOTS ROUTED INTO THE ENTIRE DOOR & 1/2" O.C. VENTILATION SLOTS SHALL STOP 1/8" FROM ALL SIDES. INSIDE OF SLOT TO BE PAINTED BLACK WITH WATERPROOF SEALANT.</div></div></div> <tr><td data-bbox="1516 27 1593 1052"><div><div>TORRINGTON SAVINGS BANK</div><div>TORRINGTON SAVINGS BANK 635 MAIN ST., TORRINGTON, CT 06790</div></div></td></tr>	<div><div>TORRINGTON SAVINGS BANK</div><div>TORRINGTON SAVINGS BANK 635 MAIN ST., TORRINGTON, CT 06790</div></div>	
<div><div>PLUMBING NOTES</div><div><div>1. WHERE POSSIBLE, UTILITIES SHALL BE CONCEALED WITHIN BUILDING WALLS OR COLUMN CHASES, NOT RUN ALONG WALL FACE, DO NOT STRIKE OUT OF FLOOR AND RUN ON THE FACE OF THE WALL.</div><div>2. ANY AND ALL EXPOSED PIPING OR FITTINGS TO BE STAINLESS STEEL, CHROME PLATED OR ENCLOSED IN A CONCEALED, MOUNTED STAINLESS STEEL CHASE.</div><div>3. DRINKING FOUNTAINS ARE BY MECHANICAL TRADES. VERIFY UTILITY REQUIREMENTS WITH MECHANICAL ENGINEER.</div></div><div><div>FIRE / LIFE SAFETY NOTES</div><div><div>1. FIRE PROTECTION EQUIPMENT AND SERVICE ACCESS MUST BE PROVIDED DURING THE CONSTRUCTION PERIOD AS REQUIRED BY THE COUNTY.</div><div>2. PROVIDE A PORTABLE FIRE EXTINGUISHER WITH A RATING OF NOT LESS THAN 2-A WITH 10-PO TYPICAL, EXTANT TO ALL PORTIONS OF THE PROJECT, AND ADDITIONAL EXTINGUISHERS AS REQUIRED BY THE GOVERNMENT FIELD INSPECTOR OR BUILDING DEPARTMENT INSPECTOR.</div><div>3. ALL FIRE RATED ASSEMBLIES SHALL BE INSTALLED, LABELED, AND INSPECTED IN ACCORDANCE WITH THE APPLICABLE BUILDING CODE WHEN REQUIRED.</div><div>4. PROVIDE EXIT SIGN WITH 1-7275 OVER REQUIRED EXITS, WHERE SHOWN ON DRAWINGS, AND ADDITIONAL SIGNS AS REQUIRED BY BUILDING DEPARTMENT INSPECTOR OR FIRE DEPARTMENT FIELD INSPECTOR. CONNECT EXIT SIGNS TO EMERGENCY POWER CIRCUITS. COMPLY WITH BUILDING CODES.</div><div>5. VERIFY EXISTING LIGHTING OF ONE FOOT CANEAT AT FLOOR LEVEL, COMPLY WITH BUILDING CODES.</div><div>6. EVERY EXIT DOOR SHALL BE OPERABLE FROM THE INSIDE WITHOUT THE USE OF A KEY OR ANY SPECIAL KNOWLEDGE OR EFFORT. SPECIAL LOCKING DEVICES SHALL BE OF AN APPROVED TYPE. ALL NEW DOORS SHALL HAVE APPROVED LEVER HANDLES.</div><div>7. DOORS OPENING INTO REQUIRED 1-HOUR FIRE-RATED CORRIDORS SHALL BE PROTECTED WITH A SHOWN ON DRAWING 1-HOUR APPROVED 1-HOUR APPROVED RATING AND SHALL BE SELF-CLOSING.</div><div>8. 24-HOUR DOOR JAMBS TO BE TIGHT-FITTING, SMOKE AND DRAFT CONTROLLED.</div><div>9. EXIT DOORS SHALL SWING IN THE DIRECTION OF TRAVEL WHEN SERVING 30 OR MORE PERSONS.</div><div>10. PROVIDE FIRE DAMPERS ON DOORS WHERE AIR DUCTS PENETRATE FIRE-RATED WALLS OR CHASES.</div><div>11. STORAGE, DISPENSING OR USE OF ANY FLAMMABLE OR COMBUSTIBLE LIQUIDS, FLAMMABLE GAS AND HAZARDOUS SUBSTANCES SHALL COMPLY WITH UNIFORM FIRE CODE REGULATIONS.</div><div>12. EXTEND OR MODIFY EXISTING FIRE / LIFE SAFETY SYSTEM AS REQUIRED TO PROVIDE AN APPROVED FIRE / LIFE SAFETY SYSTEM FOR FLOORING AND ZONE APPROVAL. SUBMIT PLANS TO FIRE DEPARTMENT WITH COMPLETE DESCRIPTION OF SEQUENCE OF OPERATION, AND OBTAIN APPROVAL PRIOR TO INSTALLATION.</div><div>13. LOCATE THE CENTER OF FIRE ALARM PULSING DEVICES 4" ABOVE THE LEVEL OF THE FLOOR, WORKING PLATFORM, GROUND SURFACE OR SIDEWALK.</div><div>14. EMERGENCY WARNERS BY SIREN SHALL ACTIVATE A HORN OF WARNING THE HEARING IMPAIRED. FLASHING VIBES SHALL HAVE A FREQUENCY OF NOT MORE THAN 60 FLASHES PER MINUTE.</div><div>15. THE FIRE PROTECTION DOCUMENTATION CONTAINED WITHIN THESE DRAWINGS HAVE BEEN PREPARED TO PERFORMANCE SPECIFICATION LEVEL OF EQUIPMENT FOR GENERAL DESIGN AND FIRE PROTECTION CODE COMPLIANCE (GENERAL). THE GENERAL CONTRACTOR TO OBTAIN A LICENSED FIRE DESIGN ENGINEER FROM THE STATE OF CONNECTICUT FOR THE PROJECT. THE DESIGN ENGINEER SHALL PROVIDE A P.F. SHOP DRAWINGS, STAMP / SIGN AND P.F. SHOP DRAWINGS AND SUBMIT S&P SHOP DRAWINGS FOR PERMIT.</div></div><div><div>STRUCTURAL NOTES</div><div><div>1. THE GENERAL CONTRACTOR SHALL PROVIDE COLD-FORMED METAL FRAMING SHOP DRAWINGS STAMPED BY A PROFESSIONAL ENGINEER.</div><div>2. ENGINEERING RESPONSIBILITY: PREPARATION OF SHOP DRAWINGS, DESIGN CALCULATIONS, AND OTHER STRUCTURAL DATA BY A QUALIFIED PROFESSIONAL ENGINEER.</div><div>3. PROFESSIONAL ENGINEER QUALIFICATION: A PROFESSIONAL ENGINEER WHO IS (1) FULLY QUALIFIED TO PRACTICE IN JURISDICTION WHERE PROJECT IS LOCATED AND WHO IS EXPERIENCED IN PRACTICES OF PROFESSIONAL ENGINEERING OF THE TYPE INDICATED. ENGINEERING SERVICES ARE OFFERED AS THOSE PROVIDED FOR THE PROJECT IN DESIGN, DESIGN AND DETAIL.</div><div>4. SHOP DRAWINGS:<div><div>A. INCLUDE LAYOUT, SPACINGS, SIZES, THICKNESSES, AND TYPES OF COLD-FORMED STEEL FRAMING, FABRICATION, AND FASTENINGS AND JOINTS AND CRANE DETAILS, INCLUDING MECHANICAL FASTENINGS.</div><div>B. INDICATE REINFORCING CHANNELS, OPENING FRAMING, SUPPLEMENTAL FRAMING, STRAPPING, BRACING, BRIDGING, SPLICES, ACCESSORIES, CONNECTION DETAILS, AND ATTACHMENT TO ADJACENT WORK.</div></div></div></div></div><tr><td data-bbox="1151 27 1516 1052"><div><div>MILLWORK NOTES</div><div><div>1. REFER TO FINISH SCHEDULE FOR FINISHES.</div><div>2. MILLWORK CONTRACTOR TO SITE VERIFY ALL DIMENSIONS PRIOR TO CONSTRUCTION.</div><div>3. GENERAL CONTRACTOR SHALL REFER TO CASEWORK & COUNTERTOP SPECIFICATIONS.</div><div>4. CUSTOMER SEER OF ALL SERVING COUNTERTOPS SHALL NOT EXCEED 1/8" ABOVE FINISH FLOOR.</div><div>5. G.C. IS RESPONSIBLE FOR SUPPLYING & INSTALLING ALL SITE REQUIREMENTS (IN WALL, BLOODING, ETC.) FOR MILLWORK. COORDINATE ALL REQUIREMENTS WITH VENDORS.</div><div>6. SHOP DRAWINGS MUST BE SUBMITTED AND APPROVED BY ARCHITECT & TENANT'S CONSTRUCTION MANAGER FOR APPROVAL PRIOR TO FABRICATION WHEN REQUIRED.</div><div>7. ALL MILLWORK IS TO CONFORM TO AIA/NAAMC.A.C. PREMIUM STANDARDS.</div><div>8. G.C. IS RESPONSIBLE FOR THE COORDINATION OF THE INSTALLATION PROCESS OF ALL MILLWORK, INCLUDING TOUCH-UP OF ANY DAMAGE AND FINAL CLEANING AFTER INSTALLATION.</div><div>9. MILLWORK VENDOR TO COORDINATE WITH OTHER TRADES AND PROVIDE CONCEALED GROUNDS & OR FLOORING AS REQUIRED. PROVIDE CUTOUTS FOR OUTLETS AND EQUIPMENT AS REQUIRED. VERIFY ALL FABRICATED PARTS TO FABRICATION.</div><div>10. G.C. TO PROVIDE ADDITIONAL CUTOUTS AS REQUIRED IN VENDOR SUPPLIED MILLWORK. ALL MODIFICATIONS TO BE PERFORMED BY A QUALIFIED PART CARPENTER. ALL CUTS TO BE PLACED TO MINIMIZE VISIBILITY. NO ADDITIONAL MODIFICATION TO MILLWORK WILL BE ALLOWED WITHOUT PRIOR APPROVAL FROM TENANT'S PROJECT MANAGER.</div><div>11. ALL CUTOUTS IN UNFINISHED STONE SHALL BE SPACED A MINIMUM OF 2" APART AND/OR PER MANUFACTURER'S SPECIFICATIONS.</div><div>12. FINISHED VENEERED WOOD SHALL BE FREE FROM KNOTS, SHAKES AND OTHER DEFECTS AFFECTING OVERALL QUALITY OR APPEARANCE, & SHALL BE CAREFULLY SELECTED FOR GRAIN & COLOR FOR MATCHED VARIATIONS AT JOINTS BETWEEN VENEERS.</div><div>13. ALL MILLWORK IS TO BE LABELLED OUT IN A TRADE SHOP ONLY. NO FIELD CUTTING WILL BE ALLOWED. ALSO, NO FIELD FINISHING MORE THAN 18" FROM TOP-UPS OF MILLWORK WILL BE PERMITTED.</div><div>14. ALL MILLWORK HARDWARE TO BE FURNISHED & INSTALLED BY MILLWORK VENDOR.</div><div>15. MILLWORK VENDOR TO FINISH & INSTALL RUBBER SURFACES ON ALL DOORS AND DRAWERS.</div><div>16. WOOD BLOCKING SHALL BE PRE-TREATED IN ACCORDANCE WITH APPLICABLE CODE REQUIREMENTS. LENGTHS OF WALL BLOCKING ARE TYPICAL, ALWAYS EXTENDING TO THE MOST STUD IN EACH DIRECTION.</div><div>17. ALL SURFACES TO BE FINISHED, NO EXPOSED UNFINISHED SURFACES WILL BE ACCEPTED.</div><div>18. U.O.N. ALL INTERIOR KNEEWALL SURFACES TO RECEIVE A WHITE CLEANABLE TRIP FINISH.</div><div>19. U.O.N. ALL CABINET INTERIORS TO RECEIVE A WHITE PLASTIC LAMINATE FINISH.</div><div>20. U.O.N. THE UNDERSIDE OF ALL COUNTERTOP SUBSTRATES TO RECEIVE A WHITE PLASTIC LAMINATE FINISH.</div><div>21. MILLWORK CONTRACTOR TO INSURE ALL SPECIFIED EQUIPMENT FITS INTO COUNTER AS NOTED. CHECK ALL MANUFACTURER'S SPECIFICATIONS PRIOR TO FABRICATION.</div><div>22. MILLWORK CONTRACTOR TO INSURE COUNTER FITS BRUSH WITH SURROUNDING SITE AND FINISH.</div><div>23. COORDINATE ALL CUTOUTS A/P FINAL LOCATIONS WITH KITCHEN EQUIPMENT CONTRACTOR, TYP.</div><div>24. 1/2" X 1/2" STAINLESS STEEL CORNER GUARDS ALL EXPOSED OUTSIDE CORNERS AT MILLWORK, TYP.</div><div>25. 1/2" X 1/2" STAINLESS STEEL BOTTOM EDGING AT ALL EXPOSED LAMINATE TOP-EDGES AT MILLWORK, TYP.</div><div>26. FROD EQUIPMENT AND MILLWORK TO BE SEALED, USING APPROVED CLEAR SILICONE SEALANT, TO FLOORS, WALLS AND COUNTER TOPS AS REQUIRED.</div><div>27. ALL ENGINEERED STONE BACKSPLASHES AND COUNTERTOPS SHALL BE SEALED TO ADJACENT WALLS WITH CLEAR SILICONE SEALANT AS REQUIRED. GAPS BETWEEN ENGINEERED STONE AND WALL SURFACES SHALL NOT EXCEED 1/8" MAX.</div><div>28. ANY SUPPORT LEGS INDICATED ON THE DRAWINGS ARE SUGGESTED PLACEMENT ONLY. QUANTITY OF SUPPORT LEGS SHALL BE DETERMINED BY THE MILLWORK CONTRACTOR AND ICE.</div><div>29. INSTALLATION OF EQUIPMENT AND MILLWORK TO INCLUDE PROPER SPACING TO ALLOW FOR CLEANING.</div><div>30. ALL STAINLESS STEEL, ADJUSTABLE LEGS SHALL HAVE FEET MECHANICALLY FASTENED TO THE FLOOR.</div><div>31. MAX SPAN BETWEEN LOW WALL SUPPORTS AND/OR STAINLESS STEEL LEGS SHALL NOT EXCEED 4'-0" MAX.</div><div>32. MILLWORK CONTRACTOR TO LASE WITH ICE TO COORDINATE ADEQUATE MILLWORK REINFORCEMENT TO SUPPORT SPECIFIC EQUIPMENT AT FULL CAPACITY.</div><div>33. WHERE COUNTERTOP SUBSTRATE INTERFERES WITH UNDERCOUNTER EQUIPMENT CLEARANCES, STEEL PLAT BARS SHALL BE USED TO SUPPORT THE COUNTERTOP AS NEEDED.</div><div>34. ALL SEAM LOCATIONS SHALL BE SUPPORTED BY LOW WALL AND/OR STAINLESS STEEL LEG SUPPORT WITH STEEL CHANNEL RUNNING BACK TO MAIN LOW WALL SUPPORT.</div><div>35. AFTER WORK IS COMPLETED ALL MILLWORK AND/OR EQUIPMENT WILL BE CLEANED AND SANITIZED BEFORE OPERATIONS COMMENCE.</div><div>36. ALL PLYWOOD SUBSTRATES SHALL BE MAXIMUM GRADE PLYWOOD OR APPROVED EQUAL.</div><div>37. G.C. SHALL FURNISH AND INSTALL ACCESS PANELS IN MILLWORK WHERE INDICATED ON DRAWINGS. REQUIRED BY THE NATURE OF THE PROJECT, OR REQUIRED TO SERVICE DEVICES WITHIN THE MILLWORK. THE ACCESS PANELS SHALL BE OF SUFFICIENT SIZE SO THAT ALL EQUIPMENT WILL BE COMPLETELY SERVICEABLE. PANELS SHALL BE FINISHED TO MATCH THE SURFACE IN WHICH THEY ARE LOCATED.</div><div>38. MILLWORK CONTRACTOR TO PROVIDE ADEQUATE VENTILATION IN EQUIPMENT FOR REQUIRED EQUIPMENT. CHECK ALL MANUFACTURER'S SPECIFICATIONS PRIOR TO FABRICATION.</div><div>39. U.O.N. LOUVERED MILLWORK DOORS SHALL HAVE TOP VENTILATION SLOTS ROUTED INTO THE ENTIRE DOOR & 1/2" O.C. VENTILATION SLOTS SHALL STOP 1/8" FROM ALL SIDES. INSIDE OF SLOT TO BE PAINTED BLACK WITH WATERPROOF SEALANT.</div></div></div><tr><td data-bbox="1516 27 1593 1052"><div><div>TORRINGTON SAVINGS BANK</div><div>TORRINGTON SAVINGS BANK 635 MAIN ST., TORRINGTON, CT 06790</div></div></td></tr></td></tr></div></div>	<div><div>MILLWORK NOTES</div><div><div>1. REFER TO FINISH SCHEDULE FOR FINISHES.</div><div>2. MILLWORK CONTRACTOR TO SITE VERIFY ALL DIMENSIONS PRIOR TO CONSTRUCTION.</div><div>3. GENERAL CONTRACTOR SHALL REFER TO CASEWORK & COUNTERTOP SPECIFICATIONS.</div><div>4. CUSTOMER SEER OF ALL SERVING COUNTERTOPS SHALL NOT EXCEED 1/8" ABOVE FINISH FLOOR.</div><div>5. G.C. IS RESPONSIBLE FOR SUPPLYING & INSTALLING ALL SITE REQUIREMENTS (IN WALL, BLOODING, ETC.) FOR MILLWORK. COORDINATE ALL REQUIREMENTS WITH VENDORS.</div><div>6. SHOP DRAWINGS MUST BE SUBMITTED AND APPROVED BY ARCHITECT & TENANT'S CONSTRUCTION MANAGER FOR APPROVAL PRIOR TO FABRICATION WHEN REQUIRED.</div><div>7. ALL MILLWORK IS TO CONFORM TO AIA/NAAMC.A.C. PREMIUM STANDARDS.</div><div>8. G.C. IS RESPONSIBLE FOR THE COORDINATION OF THE INSTALLATION PROCESS OF ALL MILLWORK, INCLUDING TOUCH-UP OF ANY DAMAGE AND FINAL CLEANING AFTER INSTALLATION.</div><div>9. MILLWORK VENDOR TO COORDINATE WITH OTHER TRADES AND PROVIDE CONCEALED GROUNDS & OR FLOORING AS REQUIRED. PROVIDE CUTOUTS FOR OUTLETS AND EQUIPMENT AS REQUIRED. VERIFY ALL FABRICATED PARTS TO FABRICATION.</div><div>10. G.C. TO PROVIDE ADDITIONAL CUTOUTS AS REQUIRED IN VENDOR SUPPLIED MILLWORK. ALL MODIFICATIONS TO BE PERFORMED BY A QUALIFIED PART CARPENTER. ALL CUTS TO BE PLACED TO MINIMIZE VISIBILITY. NO ADDITIONAL MODIFICATION TO MILLWORK WILL BE ALLOWED WITHOUT PRIOR APPROVAL FROM TENANT'S PROJECT MANAGER.</div><div>11. ALL CUTOUTS IN UNFINISHED STONE SHALL BE SPACED A MINIMUM OF 2" APART AND/OR PER MANUFACTURER'S SPECIFICATIONS.</div><div>12. FINISHED VENEERED WOOD SHALL BE FREE FROM KNOTS, SHAKES AND OTHER DEFECTS AFFECTING OVERALL QUALITY OR APPEARANCE, & SHALL BE CAREFULLY SELECTED FOR GRAIN & COLOR FOR MATCHED VARIATIONS AT JOINTS BETWEEN VENEERS.</div><div>13. ALL MILLWORK IS TO BE LABELLED OUT IN A TRADE SHOP ONLY. NO FIELD CUTTING WILL BE ALLOWED. ALSO, NO FIELD FINISHING MORE THAN 18" FROM TOP-UPS OF MILLWORK WILL BE PERMITTED.</div><div>14. ALL MILLWORK HARDWARE TO BE FURNISHED & INSTALLED BY MILLWORK VENDOR.</div><div>15. MILLWORK VENDOR TO FINISH & INSTALL RUBBER SURFACES ON ALL DOORS AND DRAWERS.</div><div>16. WOOD BLOCKING SHALL BE PRE-TREATED IN ACCORDANCE WITH APPLICABLE CODE REQUIREMENTS. LENGTHS OF WALL BLOCKING ARE TYPICAL, ALWAYS EXTENDING TO THE MOST STUD IN EACH DIRECTION.</div><div>17. ALL SURFACES TO BE FINISHED, NO EXPOSED UNFINISHED SURFACES WILL BE ACCEPTED.</div><div>18. U.O.N. ALL INTERIOR KNEEWALL SURFACES TO RECEIVE A WHITE CLEANABLE TRIP FINISH.</div><div>19. U.O.N. ALL CABINET INTERIORS TO RECEIVE A WHITE PLASTIC LAMINATE FINISH.</div><div>20. U.O.N. THE UNDERSIDE OF ALL COUNTERTOP SUBSTRATES TO RECEIVE A WHITE PLASTIC LAMINATE FINISH.</div><div>21. MILLWORK CONTRACTOR TO INSURE ALL SPECIFIED EQUIPMENT FITS INTO COUNTER AS NOTED. CHECK ALL MANUFACTURER'S SPECIFICATIONS PRIOR TO FABRICATION.</div><div>22. MILLWORK CONTRACTOR TO INSURE COUNTER FITS BRUSH WITH SURROUNDING SITE AND FINISH.</div><div>23. COORDINATE ALL CUTOUTS A/P FINAL LOCATIONS WITH KITCHEN EQUIPMENT CONTRACTOR, TYP.</div><div>24. 1/2" X 1/2" STAINLESS STEEL CORNER GUARDS ALL EXPOSED OUTSIDE CORNERS AT MILLWORK, TYP.</div><div>25. 1/2" X 1/2" STAINLESS STEEL BOTTOM EDGING AT ALL EXPOSED LAMINATE TOP-EDGES AT MILLWORK, TYP.</div><div>26. FROD EQUIPMENT AND MILLWORK TO BE SEALED, USING APPROVED CLEAR SILICONE SEALANT, TO FLOORS, WALLS AND COUNTER TOPS AS REQUIRED.</div><div>27. ALL ENGINEERED STONE BACKSPLASHES AND COUNTERTOPS SHALL BE SEALED TO ADJACENT WALLS WITH CLEAR SILICONE SEALANT AS REQUIRED. GAPS BETWEEN ENGINEERED STONE AND WALL SURFACES SHALL NOT EXCEED 1/8" MAX.</div><div>28. ANY SUPPORT LEGS INDICATED ON THE DRAWINGS ARE SUGGESTED PLACEMENT ONLY. QUANTITY OF SUPPORT LEGS SHALL BE DETERMINED BY THE MILLWORK CONTRACTOR AND ICE.</div><div>29. INSTALLATION OF EQUIPMENT AND MILLWORK TO INCLUDE PROPER SPACING TO ALLOW FOR CLEANING.</div><div>30. ALL STAINLESS STEEL, ADJUSTABLE LEGS SHALL HAVE FEET MECHANICALLY FASTENED TO THE FLOOR.</div><div>31. MAX SPAN BETWEEN LOW WALL SUPPORTS AND/OR STAINLESS STEEL LEGS SHALL NOT EXCEED 4'-0" MAX.</div><div>32. MILLWORK CONTRACTOR TO LASE WITH ICE TO COORDINATE ADEQUATE MILLWORK REINFORCEMENT TO SUPPORT SPECIFIC EQUIPMENT AT FULL CAPACITY.</div><div>33. WHERE COUNTERTOP SUBSTRATE INTERFERES WITH UNDERCOUNTER EQUIPMENT CLEARANCES, STEEL PLAT BARS SHALL BE USED TO SUPPORT THE COUNTERTOP AS NEEDED.</div><div>34. ALL SEAM LOCATIONS SHALL BE SUPPORTED BY LOW WALL AND/OR STAINLESS STEEL LEG SUPPORT WITH STEEL CHANNEL RUNNING BACK TO MAIN LOW WALL SUPPORT.</div><div>35. AFTER WORK IS COMPLETED ALL MILLWORK AND/OR EQUIPMENT WILL BE CLEANED AND SANITIZED BEFORE OPERATIONS COMMENCE.</div><div>36. ALL PLYWOOD SUBSTRATES SHALL BE MAXIMUM GRADE PLYWOOD OR APPROVED EQUAL.</div><div>37. G.C. SHALL FURNISH AND INSTALL ACCESS PANELS IN MILLWORK WHERE INDICATED ON DRAWINGS. REQUIRED BY THE NATURE OF THE PROJECT, OR REQUIRED TO SERVICE DEVICES WITHIN THE MILLWORK. THE ACCESS PANELS SHALL BE OF SUFFICIENT SIZE SO THAT ALL EQUIPMENT WILL BE COMPLETELY SERVICEABLE. PANELS SHALL BE FINISHED TO MATCH THE SURFACE IN WHICH THEY ARE LOCATED.</div><div>38. MILLWORK CONTRACTOR TO PROVIDE ADEQUATE VENTILATION IN EQUIPMENT FOR REQUIRED EQUIPMENT. CHECK ALL MANUFACTURER'S SPECIFICATIONS PRIOR TO FABRICATION.</div><div>39. U.O.N. LOUVERED MILLWORK DOORS SHALL HAVE TOP VENTILATION SLOTS ROUTED INTO THE ENTIRE DOOR & 1/2" O.C. VENTILATION SLOTS SHALL STOP 1/8" FROM ALL SIDES. INSIDE OF SLOT TO BE PAINTED BLACK WITH WATERPROOF SEALANT.</div></div></div> <tr><td data-bbox="1516 27 1593 1052"><div><div>TORRINGTON SAVINGS BANK</div><div>TORRINGTON SAVINGS BANK 635 MAIN ST., TORRINGTON, CT 06790</div></div></td></tr>	<div><div>TORRINGTON SAVINGS BANK</div><div>TORRINGTON SAVINGS BANK 635 MAIN ST., TORRINGTON, CT 06790</div></div>		
<div><div>MILLWORK NOTES</div><div><div>1. REFER TO FINISH SCHEDULE FOR FINISHES.</div><div>2. MILLWORK CONTRACTOR TO SITE VERIFY ALL DIMENSIONS PRIOR TO CONSTRUCTION.</div><div>3. GENERAL CONTRACTOR SHALL REFER TO CASEWORK & COUNTERTOP SPECIFICATIONS.</div><div>4. CUSTOMER SEER OF ALL SERVING COUNTERTOPS SHALL NOT EXCEED 1/8" ABOVE FINISH FLOOR.</div><div>5. G.C. IS RESPONSIBLE FOR SUPPLYING & INSTALLING ALL SITE REQUIREMENTS (IN WALL, BLOODING, ETC.) FOR MILLWORK. COORDINATE ALL REQUIREMENTS WITH VENDORS.</div><div>6. SHOP DRAWINGS MUST BE SUBMITTED AND APPROVED BY ARCHITECT & TENANT'S CONSTRUCTION MANAGER FOR APPROVAL PRIOR TO FABRICATION WHEN REQUIRED.</div><div>7. ALL MILLWORK IS TO CONFORM TO AIA/NAAMC.A.C. PREMIUM STANDARDS.</div><div>8. G.C. IS RESPONSIBLE FOR THE COORDINATION OF THE INSTALLATION PROCESS OF ALL MILLWORK, INCLUDING TOUCH-UP OF ANY DAMAGE AND FINAL CLEANING AFTER INSTALLATION.</div><div>9. MILLWORK VENDOR TO COORDINATE WITH OTHER TRADES AND PROVIDE CONCEALED GROUNDS & OR FLOORING AS REQUIRED. PROVIDE CUTOUTS FOR OUTLETS AND EQUIPMENT AS REQUIRED. VERIFY ALL FABRICATED PARTS TO FABRICATION.</div><div>10. G.C. TO PROVIDE ADDITIONAL CUTOUTS AS REQUIRED IN VENDOR SUPPLIED MILLWORK. ALL MODIFICATIONS TO BE PERFORMED BY A QUALIFIED PART CARPENTER. ALL CUTS TO BE PLACED TO MINIMIZE VISIBILITY. NO ADDITIONAL MODIFICATION TO MILLWORK WILL BE ALLOWED WITHOUT PRIOR APPROVAL FROM TENANT'S PROJECT MANAGER.</div><div>11. ALL CUTOUTS IN UNFINISHED STONE SHALL BE SPACED A MINIMUM OF 2" APART AND/OR PER MANUFACTURER'S SPECIFICATIONS.</div><div>12. FINISHED VENEERED WOOD SHALL BE FREE FROM KNOTS, SHAKES AND OTHER DEFECTS AFFECTING OVERALL QUALITY OR APPEARANCE, & SHALL BE CAREFULLY SELECTED FOR GRAIN & COLOR FOR MATCHED VARIATIONS AT JOINTS BETWEEN VENEERS.</div><div>13. ALL MILLWORK IS TO BE LABELLED OUT IN A TRADE SHOP ONLY. NO FIELD CUTTING WILL BE ALLOWED. ALSO, NO FIELD FINISHING MORE THAN 18" FROM TOP-UPS OF MILLWORK WILL BE PERMITTED.</div><div>14. ALL MILLWORK HARDWARE TO BE FURNISHED & INSTALLED BY MILLWORK VENDOR.</div><div>15. MILLWORK VENDOR TO FINISH & INSTALL RUBBER SURFACES ON ALL DOORS AND DRAWERS.</div><div>16. WOOD BLOCKING SHALL BE PRE-TREATED IN ACCORDANCE WITH APPLICABLE CODE REQUIREMENTS. LENGTHS OF WALL BLOCKING ARE TYPICAL, ALWAYS EXTENDING TO THE MOST STUD IN EACH DIRECTION.</div><div>17. ALL SURFACES TO BE FINISHED, NO EXPOSED UNFINISHED SURFACES WILL BE ACCEPTED.</div><div>18. U.O.N. ALL INTERIOR KNEEWALL SURFACES TO RECEIVE A WHITE CLEANABLE TRIP FINISH.</div><div>19. U.O.N. ALL CABINET INTERIORS TO RECEIVE A WHITE PLASTIC LAMINATE FINISH.</div><div>20. U.O.N. THE UNDERSIDE OF ALL COUNTERTOP SUBSTRATES TO RECEIVE A WHITE PLASTIC LAMINATE FINISH.</div><div>21. MILLWORK CONTRACTOR TO INSURE ALL SPECIFIED EQUIPMENT FITS INTO COUNTER AS NOTED. CHECK ALL MANUFACTURER'S SPECIFICATIONS PRIOR TO FABRICATION.</div><div>22. MILLWORK CONTRACTOR TO INSURE COUNTER FITS BRUSH WITH SURROUNDING SITE AND FINISH.</div><div>23. COORDINATE ALL CUTOUTS A/P FINAL LOCATIONS WITH KITCHEN EQUIPMENT CONTRACTOR, TYP.</div><div>24. 1/2" X 1/2" STAINLESS STEEL CORNER GUARDS ALL EXPOSED OUTSIDE CORNERS AT MILLWORK, TYP.</div><div>25. 1/2" X 1/2" STAINLESS STEEL BOTTOM EDGING AT ALL EXPOSED LAMINATE TOP-EDGES AT MILLWORK, TYP.</div><div>26. FROD EQUIPMENT AND MILLWORK TO BE SEALED, USING APPROVED CLEAR SILICONE SEALANT, TO FLOORS, WALLS AND COUNTER TOPS AS REQUIRED.</div><div>27. ALL ENGINEERED STONE BACKSPLASHES AND COUNTERTOPS SHALL BE SEALED TO ADJACENT WALLS WITH CLEAR SILICONE SEALANT AS REQUIRED. GAPS BETWEEN ENGINEERED STONE AND WALL SURFACES SHALL NOT EXCEED 1/8" MAX.</div><div>28. ANY SUPPORT LEGS INDICATED ON THE DRAWINGS ARE SUGGESTED PLACEMENT ONLY. QUANTITY OF SUPPORT LEGS SHALL BE DETERMINED BY THE MILLWORK CONTRACTOR AND ICE.</div><div>29. INSTALLATION OF EQUIPMENT AND MILLWORK TO INCLUDE PROPER SPACING TO ALLOW FOR CLEANING.</div><div>30. ALL STAINLESS STEEL, ADJUSTABLE LEGS SHALL HAVE FEET MECHANICALLY FASTENED TO THE FLOOR.</div><div>31. MAX SPAN BETWEEN LOW WALL SUPPORTS AND/OR STAINLESS STEEL LEGS SHALL NOT EXCEED 4'-0" MAX.</div><div>32. MILLWORK CONTRACTOR TO LASE WITH ICE TO COORDINATE ADEQUATE MILLWORK REINFORCEMENT TO SUPPORT SPECIFIC EQUIPMENT AT FULL CAPACITY.</div><div>33. WHERE COUNTERTOP SUBSTRATE INTERFERES WITH UNDERCOUNTER EQUIPMENT CLEARANCES, STEEL PLAT BARS SHALL BE USED TO SUPPORT THE COUNTERTOP AS NEEDED.</div><div>34. ALL SEAM LOCATIONS SHALL BE SUPPORTED BY LOW WALL AND/OR STAINLESS STEEL LEG SUPPORT WITH STEEL CHANNEL RUNNING BACK TO MAIN LOW WALL SUPPORT.</div><div>35. AFTER WORK IS COMPLETED ALL MILLWORK AND/OR EQUIPMENT WILL BE CLEANED AND SANITIZED BEFORE OPERATIONS COMMENCE.</div><div>36. ALL PLYWOOD SUBSTRATES SHALL BE MAXIMUM GRADE PLYWOOD OR APPROVED EQUAL.</div><div>37. G.C. SHALL FURNISH AND INSTALL ACCESS PANELS IN MILLWORK WHERE INDICATED ON DRAWINGS. REQUIRED BY THE NATURE OF THE PROJECT, OR REQUIRED TO SERVICE DEVICES WITHIN THE MILLWORK. THE ACCESS PANELS SHALL BE OF SUFFICIENT SIZE SO THAT ALL EQUIPMENT WILL BE COMPLETELY SERVICEABLE. PANELS SHALL BE FINISHED TO MATCH THE SURFACE IN WHICH THEY ARE LOCATED.</div><div>38. MILLWORK CONTRACTOR TO PROVIDE ADEQUATE VENTILATION IN EQUIPMENT FOR REQUIRED EQUIPMENT. CHECK ALL MANUFACTURER'S SPECIFICATIONS PRIOR TO FABRICATION.</div><div>39. U.O.N. LOUVERED MILLWORK DOORS SHALL HAVE TOP VENTILATION SLOTS ROUTED INTO THE ENTIRE DOOR & 1/2" O.C. VENTILATION SLOTS SHALL STOP 1/8" FROM ALL SIDES. INSIDE OF SLOT TO BE PAINTED BLACK WITH WATERPROOF SEALANT.</div></div></div> <tr><td data-bbox="1516 27 1593 1052"><div><div>TORRINGTON SAVINGS BANK</div><div>TORRINGTON SAVINGS BANK 635 MAIN ST., TORRINGTON, CT 06790</div></div></td></tr>	<div><div>TORRINGTON SAVINGS BANK</div><div>TORRINGTON SAVINGS BANK 635 MAIN ST., TORRINGTON, CT 06790</div></div>			
<div><div>TORRINGTON SAVINGS BANK</div><div>TORRINGTON SAVINGS BANK 635 MAIN ST., TORRINGTON, CT 06790</div></div>				



USE GROUPS:

B

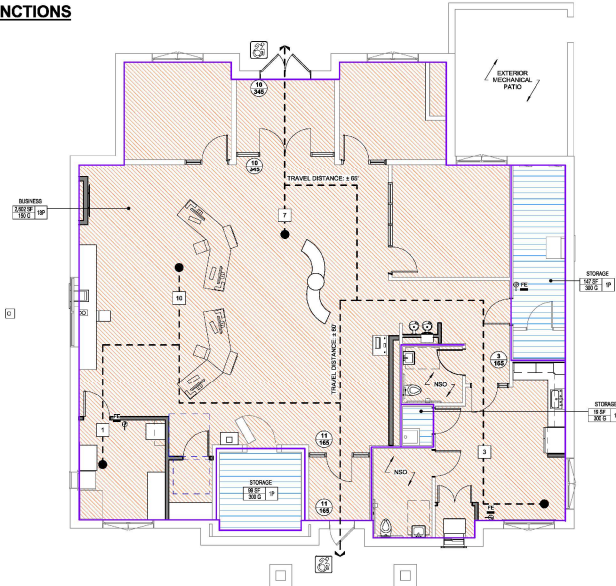
GROUP: B
ACTUAL = 2,870 SF

OCCUPANCY ANALYSIS - PER IBC TABLE 1004.1.2				
USE GROUP	OCCUPANCY FUNCTION	AREA	LOAD FACTOR	CALCULATED OCCUPANCY
FIRST FLOOR	B	STORAGE	19 SF	300 SF
	B	STORAGE	89 SF	300 SF
	B	STORAGE	147 SF	300 SF
	B	BUSINESS	2,861 SF	150 SF
TOTAL CALCULATED SF & OCCUPANT LOAD		2,861 SF		21

2 USE & OCCUPANCY CLASSIFICATION PLAN - PER IBC 302 1/16" = 1'-0"

OCCUPANCY FUNCTIONS

BUSINESS
STORAGE



1 FIRST FLOOR EGRESS & OCCUPANCY PLAN - PER IBC TABLE: 1004.1.2 3/16" = 1'-0"

0 2 4 6
3/16" = 1'

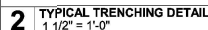
CONNECTICUT APPLICABLE CODES			
CODE	CODE SECTION(S)		
BUILDING CODE	2021 IRC PORTION OF THE 2021 CT STATE BUILDING CODE ADOPTS WITH AMENDMENTS: INTERNATIONAL BUILDING CODE 2018 (IBC 2018)		
PLUMBING CODE	2021 IPC PORTION OF THE 2021 CONNECTICUT STATE BUILDING CODE ADOPTS WITH AMENDMENTS: 2021 INTERNATIONAL PLUMBING CODE (IPC 2021)		
MECHANICAL CODE	2021 MFC PORTION OF THE 2021 CONNECTICUT STATE BUILDING CODE ADOPTS WITH AMENDMENTS: 2021 INTERNATIONAL MECHANICAL CODE (IMC 2021)		
ELECTRICAL CODE	2020 NFPA 70 PORTION OF THE 2014 CT STATE BUILDING CODE ADOPTS WITH AMENDMENTS: NFPA 70, 2020		
LIFE SAFETY CODE	2022 CONNECTICUT STATE FIRE PREVENTION CODE ADOPTS WITH AMENDMENTS: NFPA 1, 2021		
ACCESSIBILITY	ACCESSIBLE AND USABLE BUILDING AND FACILITIES 2017 OF CONNECTICUT ADOPTS WITH AMENDMENTS: A117.1, 2017		
ENERGY CODE COMPLIANCE	2021 BEC PORTION OF THE 2022 CONNECTICUT STATE BUILDING CODE ADOPTS WITH AMENDMENTS: 2019 INTERNATIONAL ENERGY CONSERVATION CODE 2018 (IECC 2018)		
EXISTING BUILDING CODE	2021 BEC PORTION OF THE 2022 CT STATE BUILDING CODE		
PROJECT DATA			
ITEM	CODE SECTION(S)	TYPE V-B	
CONSTRUCTION TYPE	IBC 601	(B) BUSINESS	
USE & OCCUPANCY CLASSIFICATION	IBC 302	(B) + 40 FT, 2 STORY(S) MAX - NOT SPRINKLERED	
TABULAR ALLOWABLE BUILDING HEIGHT	IBC TABLE 504.3 & 504.4	1 STORY(S), 30 FT	
ACTUAL BUILDING HEIGHT	IBC TABLE 504.2	(B) + 3,000 SF, WITHOUT SPRINKLER SYSTEM	
TABULAR ALLOWABLE BUILDING AREA	IBC TABLE 504.2	TOTAL BUILDING = 3,128 SF	
ACTUAL BUILDING AREA	IBC 903.3.1.1	NOT SPRINKLERED	
FIRE SUPPRESSION	IBC 907	PROVIDED	
FIRE DETECTION	IBC TABLE 1004.1.2	BES CODE PLAN	
TOTAL BUILDING OCCUPANT LOAD	IBC 1004.2	N/A	
AREA OF REFUGE	IBC TABLE 1006.2.1	(B) (70) WITHOUT SPRINKLER SYSTEM	
COMMON PATH OF TRAVEL	IBC TABLE 1017.2	(B) (50) WITHOUT SPRINKLER SYSTEM	
MAX TRAVEL DISTANCE	IBC TABLE 1006.2	44' MINIMUM	
CORRIDOR WIDTH	IBC TABLE 1006.2, EXCEPTION 2	(B) NO MORE THAN 20' WITHOUT SPRINKLER SYSTEM	
DEAD END CORRIDOR	IBC TABLE 1006.3	(B) (50) LESS OCCUPANTS	
NUMBER OF EXITS	IBC TABLE 1006.3	LEVEL 3 ALTERATION AREA OF WORK IS GREATER THAN 50% OF BUILDING AREA	
ALTERATION LEVEL	IBC TABLE 604.1	NO GREATER THAN 75 FT TRAVEL DISTANCE	
FIRE EXTINGUISHER			
FIRE RESISTANCE RATINGS			
ITEM	CODE SECTION(S)		
PRIMARY FRAME STRUCTURE	IBC TABLE 601	2 HOURS	
BEARING WALLS		EXTERIOR: 0 HOURS INTERIOR: 0 HOURS	
NON-BEARING WALLS		EXTERIOR: 0 HOURS INTERIOR: 0 HOURS	
FLOOR CONSTRUCTION		0 HOURS	
SWIFT ENCLOSURES	IBC 715.4	1 HOURS, LESS THAN 4 STORES	
EXIT ENCLOSURES	IBC 1003.2	1 HOURS, LESS THAN 4 STORES	
CORRIDORS	IBC TABLE 1006.1	OCCUPANT LOAD LESS THAN 30 HOURS WITHOUT SPRINKLER SYSTEM	
DOOR RATINGS	IBC TABLE 716.5	1 HOURS (CORRIDOR WALL = 10 HOURS) DOOR	
PLUMBING FIXTURE COUNT			
TOTAL CALCULATED OCCUPANTS = 21			
OCCUPANCY CLASSIFICATION	REQ. FIXTURE COUNT	CALC. REQUIRED FIXTURE COUNT	EXISTING TOTAL
BUSINESS	WATER CLOSETS	1 PER 25 FOR FIRST 80 1 PER 30 FOR THE REMAINDER	4
BUSINESS	LAVATORIES	1 PER 40 FOR FIRST 80 1 PER 60 FOR THE REMAINDER	2
BUSINESS	DRINKING FOUNTAIN	1 PER 100	1
BUSINESS	SERVICE SINK	1 SERVICE SINK	1
CODE SYMBOLS LEGEND			
CALCULATED OCCUPANT LOAD	(NAME) NAME - NUMBER & NAME OCCUPANT FUNCTION AREA (SQ FT) OCCUPANT LOAD OCCUPANT LOAD FACTOR (GROSS OR NET)	5 HOUR RATED WALL ASSEMBLY 1 HOUR RATED WALL ASSEMBLY 2 HOUR RATED WALL ASSEMBLY 3 HOUR RATED WALL ASSEMBLY	ISSUED FOR: BID & PERMIT ISSUED DATE: 7.7.2023 DRAWN BY: A/ur CHECKED BY: N/ur PROJECT NUMBER: 2103
EXIT CAPACITY	(10) ACTUAL EGRESS CAPACITY MAXIMUM EGRESS CAPACITY	MAXIMUM CORRIDOR PATH OF TRAVEL	EGRESS PATH START EGRESS DIRECTION TRAVEL DISTANCE: 10 FT EGRESS PATH ACCUMULATED OCCUPANCY
HANDICAP ACCESSIBLE ROUTE	(20) ACCESSIBLE ROUTE HEARING ACCESSIBILITY	MAXIMUM TRAVEL DISTANCE IN ACCUMULATED OCCUPANT LOAD	CODE DATA & EGRESS PLAN G101
FIRE EXTINGUISHER	(21) FIRE EXTINGUISHER	AREA NOT IN CONTROL, UNLESS NOTED OTHERWISE	
PROJECT SCOPE LIMITS	(22) PROJECT SCOPE LIMITS		

TORRINGTON SAVINGS BANK
TORRINGTON SAVINGS BANK
635 MAIN ST., TORRINGTON, CT 06790



ISSUED FOR: BID & PERMIT
ISSUED DATE: 7.7.2023
DRAWN BY: A/ur
CHECKED BY: N/ur
PROJECT NUMBER: 2103





CODE DATA & EGRESS PLAN
G101

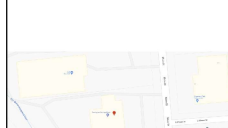
[illegible]

TORRINGTON SAVINGS BANK
TORRINGTON SAVINGS BANK
635 MAIN ST, TORRINGTON, CT 06790

[illegible]

EQUIPMENT
DEMOLITION LEGEND

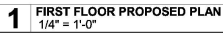
DEMOLITION LEGEND	
KEYNOTE	
COMPONENT TO BE REMOVED	
COMPONENT TO REMAIN	
AREA NOT IN CONTRACT	



ISSUED FOR: BID & PERMIT
ISSUED DATE: 7.7.2023
DRAWN BY: JB
CHECKED BY: CM
PROJECT NUMBER: 21663
<small>Copyright © 2019 by Pearson Education, Inc. All Rights Reserved.</small>
DRAWING NAME:

**FIRST FLOOR
DEMOLITION PLAN**

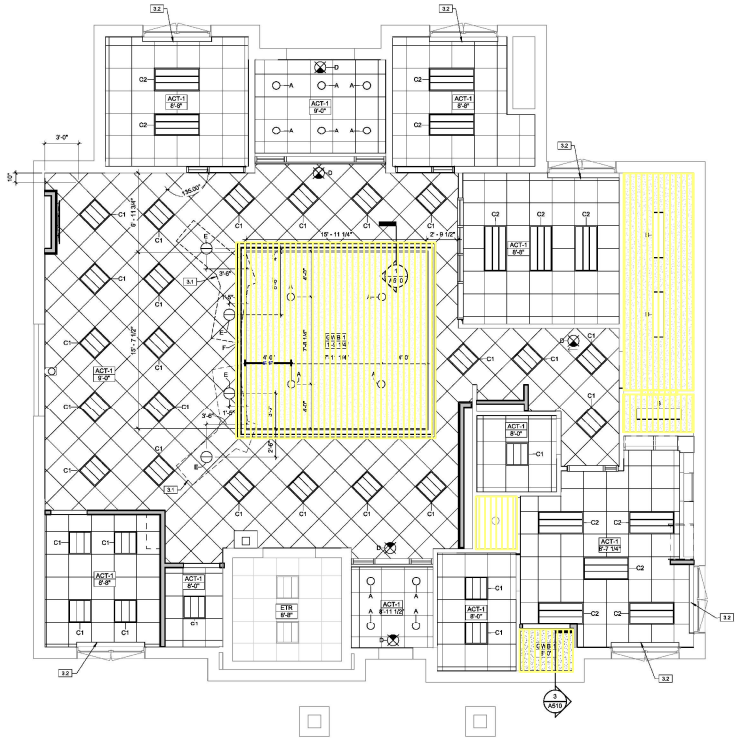
DRAWING NO.
AD101



TORRINGTON SAVINGS BANK

LIGHTING FIXTURE SCHEDULE					
TYPE	DESCRIPTION	MANUFACTURER	PART NUMBER	MOUNTING	COMMENTS
A	1" CAN LIGHT	COOPER LIGHTING	HL56	RECESSED	REFER TO ELECTRICAL DRAWINGS FOR MORE INFORMATION
B	104 CEILING MOUNTED VOLUME	COLUMBIA	ORNL10LS	CEILING	REFER TO ELECTRICAL DRAWINGS FOR MORE INFORMATION
C1	24" TROFFER LIGHT	COLUMBIA	24L10-38L-ADP-1P85	CEILING	REFER TO ELECTRICAL DRAWINGS FOR MORE INFORMATION
C2	24" TROFFER LIGHT	COLUMBIA	24L10-38L-ADP-1P85	CEILING	REFER TO ELECTRICAL DRAWINGS FOR MORE INFORMATION
E	DECO-TRAC LIGHT FIXTURE	PROGRESS LIGHT	PRO15-104	CEILING	REFER TO ELECTRICAL DRAWINGS FOR MORE INFORMATION
F	LED STRIP LIGHT	TRIMO ARCHITECTURAL	CTR1	CEILING	REFER TO ELECTRICAL DRAWINGS FOR MORE INFORMATION

10 - Gyp Ceilings - 480 SF



1 FIRST FLOOR EXISTING CEILING PLAN
1/4" = 1'-0"

PHASE ZERO DESIGN

4 WILSON STREET
DANBURY, CONNECTICUT 06810
PHONE: 860.334.1339
WWW.PHASEZERODESIGN.COM

Torrington Savings Bank

100 MAIN STREET
TORRINGTON, CT 06801

COMMERCIAL CONSTRUCTION

100 MAIN STREET
TORRINGTON, CT 06801

GENERAL CEILING NOTES

A. HVAC SHOWN ON THIS PLAN IS DIAGRAMMATICAL. REFER TO MEP DRAWINGS FOR FULL SCOPE OF WORK.
B. ALL FIXTURES TO BE INSTALLED IN ACT CEILINGS TO BE DETERMINED IN CEILING GRID (S).
C. DO NOT SCALE. VERIFY ALL CEILING HEIGHTS, AND CONFIRM THAT THE WORK CAN BE BUILT AS SHOWN IN THE EVENT OF ANY CONFLICTS OR OMISSIONS WITHIN THE DRAWINGS, GO TO CONTACT ARCHITECT FOR CLARIFICATION PRIOR TO THE PERFORMANCE OF ANY WORK IN QUESTION.
D. CEILING HEIGHT DIMENSIONS ARE TO FINISHED SURFACES.
E. ALIGN ALL CEILING GRIDS WITHIN ROOM UNLESS OTHERWISE NOTED.
F. SEE FINISH SCHEDULE FOR ADDITIONAL CEILING INFO.

CEILING KEYNOTES

DESCRIPTION
3.1 DASHED LINE INDICATES TELLER COUNTERS BELOW
3.2 NEW ROLLER SHADERS, SEE DETAIL 20410 AND FINISH SCHEDULE FOR MORE INFORMATION

REFLECTED CEILING PLAN LEGEND

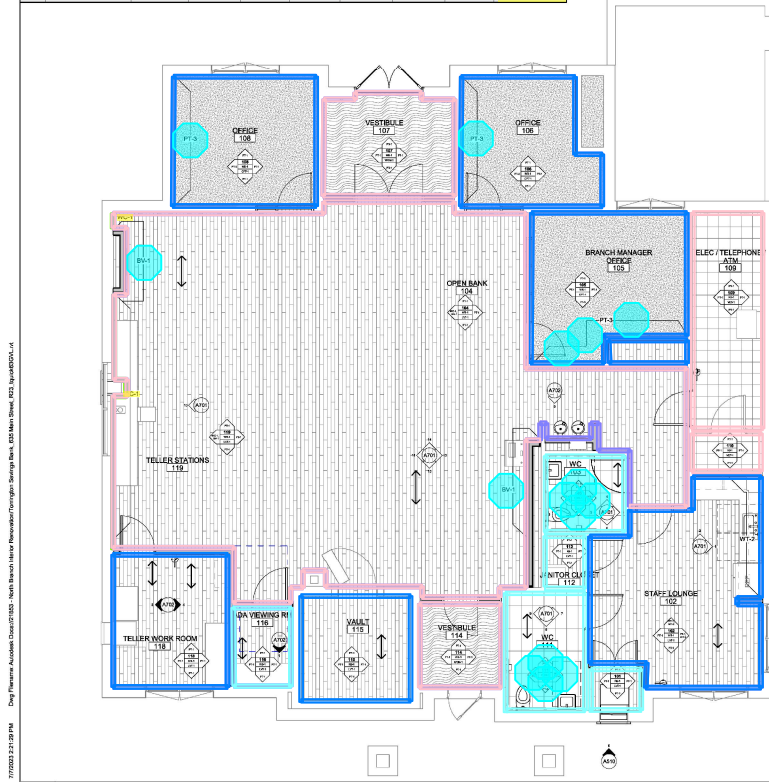
KEYNOTE: [Symbol] [Text]
CEILING INFORMATION: [Symbol] [Text]
ACT: [Symbol] [Text]
CEILING: [Symbol] [Text]
LIGHT FIXTURES: [Symbol] [Text]

KEY PLAN

ISSUED FOR: BID & PERMIT
ISSUED DATE: 7.7.2023
DRAWN BY: Author
CHECKED BY: [Name]
PROJECT NUMBER: 21853
FIRST FLOOR REFLECTED CEILING PLAN
DRAWING NO. A111

A111 RCP (23% of Scale); Takeoff in Active Area: All Areas; Torrington Savings Bank - Main St. Torrington, CT B-MR-192; Monica 2023; 7/28/2023 12:26 PM

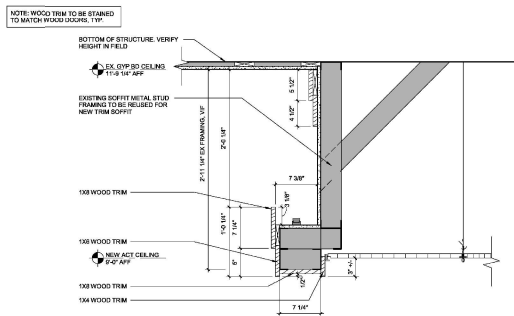
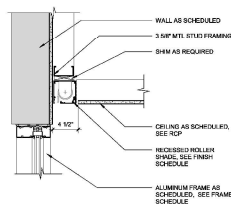
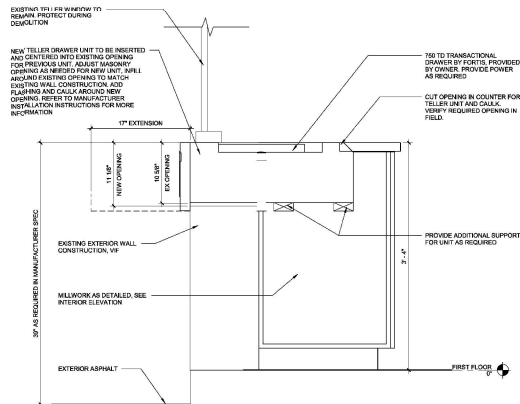
FINISH SCHEDULE									
RM #	ROOM NAME	FLOOR	BASE	N	E	S	W	CEILING	NOTES
101	ATM CABIN	LVT-1	WB-1	PT-1	PT-1	PT-1	PT-1	WB-1	
102	STAFF LOUNGE	LVT-1	WB-1	PT-1, PT-2	PT-1, PT-2	PT-1, PT-2	PT-1, PT-2	WB-1	
103	WC	LVT-1	WB-1	PT-1, PT-2	PT-1, PT-2	PT-1, PT-2	PT-1, PT-2	WB-1	
104	OPEN BANK	LVT-1	WB-1	PT-1	PT-1	PT-1	PT-1	WB-1	SEE SCHEDULE FOR MATERIALS
105	BRANCH MANAGER OFFICE	GFS-1	WB-1	PT-1	PT-1	PT-1	PT-1	WB-1	
106	OFFICE	GFS-1	WB-1	PT-1	PT-1	PT-1	PT-1	WB-1	
107	VESTIBULE	WOM-1	WB-1	PT-1	PT-1	PT-1	PT-1	WB-1	
108	OFFICE	GFS-1	WB-1	PT-1	PT-1	PT-1	PT-1	WB-1	
109	ELEC TELEPHONE (ATM)	WOM-1	WB-1	PT-1	PT-1	PT-1	PT-1	WB-1	
110	STORAGE	WOM-1	WB-1	PT-1	PT-1	PT-1	PT-1	WB-1	
111	WC	LVT-1	WB-1	PT-1	PT-1	PT-1	PT-1	WB-1	
112	JANITOR CLOSET	LVT-1	WB-1	PT-1	PT-1	PT-1	PT-1	WB-1	
113	VESTIBULE	WOM-1	WB-1	PT-1	PT-1	PT-1	PT-1	WB-1	
114	VAULT	LVT-1	WB-1	PT-1	PT-1	PT-1	PT-1	WB-1	
115	VAULT	LVT-1	WB-1	PT-1	PT-1	PT-1	PT-1	WB-1	
116	VAULT	LVT-1	WB-1	PT-1	PT-1	PT-1	PT-1	WB-1	
117	TELLER WORK ROOM	LVT-1	WB-1	PT-1	PT-1	PT-1	PT-1	WB-1	
118	TELLER STATIONS	LVT-1	WB-1	PT-1	PT-1	PT-1	PT-1	WB-1	

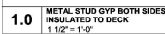


1 PROPOSED FINISH PLAN
1/4" = 1'-0"

INTERIOR FINISH IDENTIFICATION LEGEND									
D	DESCRIPTION	MANUFACTURER	NAME	STYLE	COLOR	SIZE	SPECIAL INFO		
CEILING	ACT-1	ARMSTRONG	GALLA	WHITE		24" X 24"	CLASS A / REVISED TEGULAR W/ SUPPLYING XL 6" X 6" EXPOSED GRID. SEE FINISH SCHEDULE		
FLOOR	OPT-1	GARRET	SHAW CONTRACT	NOBLE MATERIALS	HOUSED TILE 6" X 6"	24" X 24"	CLASS B / QUARTER TURN INSTALL. OFFICES		
TOILET	OPT-1	LUXURY VINYL TILE	SHAW CONTRACT	TERMINAL 2000	GRAY TRATCH	12" X 24" (3/4" THICK)	CLASS B / TYPE 1 / STAGGER INSTALL. SEE FINISH PLAN		
WC-1	VINYL COMPOSITION TILE	ARMSTRONG	ANTICLO	STANDARD EXCELLEN	SHAW'S WHITE	12" X 12"	TOILET ROOM FLOOR TILE		
WC-1	WALK OFF MAT	BECKLEY	ROUGH IDEA BRUSH	DRAFT ROOMS		24" X 24"	VERTIBLE W/ NEXTSTEP CUSHION, MOUTHPIECE INSTALL		
MILKWORK	ACT-1	WILSONART	NEOWALNUT	1761			VERTICAL, MILKWORK SURFACES		
OPT-1	QUARTZ	WILSONART					HORIZONTAL, SURFACE FRONT OF HOUSE		
OPT-2	QUARTZ	WILSONART					BREAK ROOM COUNTERTOP		
WC-1	BRICK VENDER	BELDEN BRICK COMPANY	BT. BROWN BLEND				TELLER STATION ACCENT WALL		
WB-1	MANUAL ROLLER SHADE	MECHO SHADE	EDD VAIL	67% STONE		1/4" OPEN	W/ MECHO SHADE MANUAL SHADE SYSTEM VERNY WINDOW SIZES AT ALL WINDOWS		
WALL	PT-1	PAINT	BEHLMANN MOORE	SEA SALT CO-10			EGG SHELL		
PT-2	PAINT	BEHLMANN MOORE	WHITE COOL CO-10				EGG SHELL		
PT-3	PAINT	BEHLMANN MOORE	PORCH BATH CO-10				EGG SHELL		
PT-4	PAINT	BEHLMANN MOORE	COMFORTABLE CO-10				EGG SHELL		
PT-5	PAINT	BEHLMANN MOORE	GAUMLET DRY				EGG SHELL		
PT-6	PAINT	BEHLMANN MOORE	GAUMLET DRY				EGG SHELL		
PT-7	PAINT	BEHLMANN MOORE	GAUMLET DRY				EGG SHELL		
PT-8	PAINT	BEHLMANN MOORE	GAUMLET DRY				EGG SHELL		
PT-9	PAINT	BEHLMANN MOORE	GAUMLET DRY				EGG SHELL		
PT-10	PAINT	BEHLMANN MOORE	GAUMLET DRY				EGG SHELL		
PT-11	PAINT	BEHLMANN MOORE	GAUMLET DRY				EGG SHELL		
PT-12	PAINT	BEHLMANN MOORE	GAUMLET DRY				EGG SHELL		
PT-13	PAINT	BEHLMANN MOORE	GAUMLET DRY				EGG SHELL		
PT-14	PAINT	BEHLMANN MOORE	GAUMLET DRY				EGG SHELL		
PT-15	PAINT	BEHLMANN MOORE	GAUMLET DRY				EGG SHELL		
PT-16	PAINT	BEHLMANN MOORE	GAUMLET DRY				EGG SHELL		
PT-17	PAINT	BEHLMANN MOORE	GAUMLET DRY				EGG SHELL		
PT-18	PAINT	BEHLMANN MOORE	GAUMLET DRY				EGG SHELL		
PT-19	PAINT	BEHLMANN MOORE	GAUMLET DRY				EGG SHELL		
PT-20	PAINT	BEHLMANN MOORE	GAUMLET DRY				EGG SHELL		
PT-21	PAINT	BEHLMANN MOORE	GAUMLET DRY				EGG SHELL		
PT-22	PAINT	BEHLMANN MOORE	GAUMLET DRY				EGG SHELL		
PT-23	PAINT	BEHLMANN MOORE	GAUMLET DRY				EGG SHELL		
PT-24	PAINT	BEHLMANN MOORE	GAUMLET DRY				EGG SHELL		
PT-25	PAINT	BEHLMANN MOORE	GAUMLET DRY				EGG SHELL		
PT-26	PAINT	BEHLMANN MOORE	GAUMLET DRY				EGG SHELL		
PT-27	PAINT	BEHLMANN MOORE	GAUMLET DRY				EGG SHELL		
PT-28	PAINT	BEHLMANN MOORE	GAUMLET DRY				EGG SHELL		
PT-29	PAINT	BEHLMANN MOORE	GAUMLET DRY				EGG SHELL		
PT-30	PAINT	BEHLMANN MOORE	GAUMLET DRY				EGG SHELL		
PT-31	PAINT	BEHLMANN MOORE	GAUMLET DRY				EGG SHELL		
PT-32	PAINT	BEHLMANN MOORE	GAUMLET DRY				EGG SHELL		
PT-33	PAINT	BEHLMANN MOORE	GAUMLET DRY				EGG SHELL		
PT-34	PAINT	BEHLMANN MOORE	GAUMLET DRY				EGG SHELL		
PT-35	PAINT	BEHLMANN MOORE	GAUMLET DRY				EGG SHELL		
PT-36	PAINT	BEHLMANN MOORE	GAUMLET DRY				EGG SHELL		
PT-37	PAINT	BEHLMANN MOORE	GAUMLET DRY				EGG SHELL		
PT-38	PAINT	BEHLMANN MOORE	GAUMLET DRY				EGG SHELL		
PT-39	PAINT	BEHLMANN MOORE	GAUMLET DRY				EGG SHELL		
PT-40	PAINT	BEHLMANN MOORE	GAUMLET DRY				EGG SHELL		
PT-41	PAINT	BEHLMANN MOORE	GAUMLET DRY				EGG SHELL		
PT-42	PAINT	BEHLMANN MOORE	GAUMLET DRY				EGG SHELL		
PT-43	PAINT	BEHLMANN MOORE	GAUMLET DRY				EGG SHELL		
PT-44	PAINT	BEHLMANN MOORE	GAUMLET DRY				EGG SHELL		
PT-45	PAINT	BEHLMANN MOORE	GAUMLET DRY				EGG SHELL		
PT-46	PAINT	BEHLMANN MOORE	GAUMLET DRY				EGG SHELL		
PT-47	PAINT	BEHLMANN MOORE	GAUMLET DRY				EGG SHELL		
PT-48	PAINT	BEHLMANN MOORE	GAUMLET DRY				EGG SHELL		
PT-49	PAINT	BEHLMANN MOORE	GAUMLET DRY				EGG SHELL		
PT-50	PAINT	BEHLMANN MOORE	GAUMLET DRY				EGG SHELL		
PT-51	PAINT	BEHLMANN MOORE	GAUMLET DRY				EGG SHELL		
PT-52	PAINT	BEHLMANN MOORE	GAUMLET DRY				EGG SHELL		
PT-53	PAINT	BEHLMANN MOORE	GAUMLET DRY				EGG SHELL		
PT-54	PAINT	BEHLMANN MOORE	GAUMLET DRY				EGG SHELL		
PT-55	PAINT	BEHLMANN MOORE	GAUMLET DRY				EGG SHELL		
PT-56	PAINT	BEHLMANN MOORE	GAUMLET DRY				EGG SHELL		
PT-57	PAINT	BEHLMANN MOORE	GAUMLET DRY				EGG SHELL		
PT-58	PAINT	BEHLMANN MOORE	GAUMLET DRY				EGG SHELL		
PT-59	PAINT	BEHLMANN MOORE	GAUMLET DRY				EGG SHELL		
PT-60	PAINT	BEHLMANN MOORE	GAUMLET DRY				EGG SHELL		
PT-61	PAINT	BEHLMANN MOORE	GAUMLET DRY				EGG SHELL		
PT-62	PAINT	BEHLMANN MOORE	GAUMLET DRY				EGG SHELL		
PT-63	PAINT	BEHLMANN MOORE	GAUMLET DRY				EGG SHELL		
PT-64	PAINT	BEHLMANN MOORE	GAUMLET DRY				EGG SHELL		
PT-65	PAINT	BEHLMANN MOORE	GAUMLET DRY				EGG SHELL		
PT-66	PAINT	BEHLMANN MOORE	GAUMLET DRY				EGG SHELL		
PT-67	PAINT	BEHLMANN MOORE	GAUMLET DRY				EGG SHELL		
PT-68	PAINT	BEHLMANN MOORE	GAUMLET DRY				EGG SHELL		
PT-69	PAINT	BEHLMANN MOORE	GAUMLET DRY				EGG SHELL		
PT-70	PAINT	BEHLMANN MOORE	GAUMLET DRY				EGG SHELL		
PT-71	PAINT	BEHLMANN MOORE	GAUMLET DRY				EGG SHELL		
PT-72	PAINT	BEHLMANN MOORE	GAUMLET DRY				EGG SHELL		
PT-73	PAINT	BEHLMANN MOORE	GAUMLET DRY				EGG SHELL		
PT-74	PAINT	BEHLMANN MOORE	GAUMLET DRY				EGG SHELL		
PT-75	PAINT	BEHLMANN MOORE	GAUMLET DRY				EGG SHELL		
PT-76	PAINT	BEHLMANN MOORE	GAUMLET DRY				EGG SHELL		
PT-77	PAINT	BEHLMANN MOORE	GAUMLET DRY				EGG SHELL		
PT-78	PAINT	BEHLMANN MOORE	GAUMLET DRY				EGG SHELL		
PT-79	PAINT	BEHLMANN MOORE	GAUMLET DRY				EGG SHELL		
PT-80	PAINT	BEHLMANN MOORE	GAUMLET DRY				EGG SHELL		
PT-81	PAINT	BEHLMANN MOORE	GAUMLET DRY				EGG SHELL		
PT-82	PAINT	BEHLMANN MOORE	GAUMLET DRY				EGG SHELL		
PT-83	PAINT	BEHLMANN MOORE	GAUMLET DRY				EGG SHELL		
PT-84	PAINT	BEHLMANN MOORE	GAUMLET DRY				EGG SHELL		
PT-85	PAINT	BEHLMANN MOORE	GAUMLET DRY				EGG SHELL		
PT-86	PAINT	BEHLMANN MOORE	GAUMLET DRY				EGG SHELL		
PT-87	PAINT	BEHLMANN MOORE	GAUMLET DRY				EGG SHELL		
PT-88	PAINT	BEHLMANN MOORE	GAUMLET DRY				EGG SHELL		
PT-89	PAINT	BEHLMANN MOORE	GAUMLET DRY				EGG SHELL		
PT-90	PAINT	BEHLMANN MOORE	GAUMLET DRY				EGG SHELL		
PT-91	PAINT	BEHLMANN MOORE	GAUMLET DRY				EGG SHELL		
PT-92	PAINT	BEHLMANN MOORE	GAUMLET DRY				EGG SHELL		
PT-93	PAINT	BEHLMANN MOORE	GAUMLET DRY				EGG SHELL		
PT-94	PAINT	BEHLMANN MOORE	GAUMLET DRY				EGG SHELL		
PT-95	PAINT	BEHLMANN MOORE	GAUMLET DRY				EGG SHELL		
PT-96	PAINT	BEHLMANN MOORE	GAUMLET DRY				EGG SHELL		
PT-97	PAINT	BEHLMANN MOORE	GAUMLET DRY				EGG SHELL		
PT-98	PAINT	BEHLMANN MOORE	GAUMLET DRY				EGG SHELL		
PT-99	PAINT	BEHLMANN MOORE	GAUMLET DRY				EGG SHELL		
PT-100	PAINT	BEHLMANN MOORE	GAUMLET DRY				EGG SHELL		

- 21 - Paint 08' high - 945 SF
- 22 - Paint 09

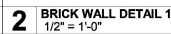
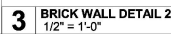




1. SEE LIFE SAFETY DRAWINGS FOR LOCATIONS OF RATED PARTITIONS
2. ALL GYPSUM WALL BOARD TO BE TYPE "X" UNLESS OTHERWISE SPECIFIED
3. PROVIDE TILE BACKERBOARD ON ALL WALL SCHEDULE TO RECEIVE TILE FINISH
4. WALL FINISHES VARY, REFER TO FINISH SCHEDULE, INTERIOR ELEVATIONS, AND DETAILS FOR ALL PARTITIONS
5. MAINTAIN FIRE RATING AND ACoustICAL RATING OF PARTITIONS AROUND FIRE EXTINGUISHER LOCATIONS, ELEVATOR LANDING ENCLOSURES, AND STAIRWAYS
6. FIRE-RATED PARTITIONS SHALL HAVE FIRE STOP SEALANTS AT THE HEAD, SILL, THROUGH PENETRATIONS, OPENINGS, AND JUNCTIONS WITH DISSIMILAR MATERIALS
7. NON-RATED PARTITIONS SHALL HAVE SEALANTS AT THE HEAD, SILL, THROUGH PENETRATIONS, OPENINGS, AND JUNCTIONS WITH DISSIMILAR MATERIALS
8. ALL STUD WALLS CONSTRUCTED TO DECK SHALL HAVE A DEFLECTION TRACK TO ACCOMMODATE MOVEMENT OF THE STRUCTURE. ALL DEFLECTION TRACK SHALL ACCOMMODATE A MINIMUM OF 1/2" OF DEFLECTION OF THE DECK

<p>PHASE ZERO DESIGN architects + interior designers</p> <p>8 WILCOX STREET SANDUSKY, CONNECTICUT 06870 PHONE: (860) 264-1024 FAX: (860) 264-1028 www.phasezerodesign.com</p>	
<p>TSB Torrington Savings Bank</p> <p>TORRINGTON SAVINGS BANK 125 MAIN STREET TORRINGTON, CT 06871</p>	
<p>NCC COMMERCIAL CONSTRUCTION</p> <p>NCC COMMERCIAL CONSTRUCTION 352 BAKER JACKSON WAY, 2ND FLOOR PLAINVILLE, CT 06062</p>	

TORRINGTON SAVINGS BANK
635 MAIN ST, TORRINGTON, CT 06790



INTERIOR WALL
ASSEMBLIES AND
MISC DETAILS

A531

[illegible]

GYP. BOARD WALL CONSTRUCTION, SEE PART 1 TYPE 1.
 MT. STUD-HEADER PER MANUFACTURER RECOMMENDATIONS.
 CAULKING @ EA. SIDE
 SHM AS REQUIRED
 HOLLOW METAL FRAME REFERENCE DOOR SCHEDULE
 DOOR PER DOOR SCHEDULE

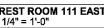
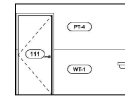
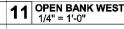
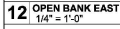
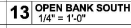
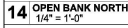
H1	HMF DOOR HEAD 3" = 1'-0"
-----------	------------------------------------

TORBRINGTON SAVINGS BANK

**DOOR SCHEDULE
& DOOR TYPE
ELEVATIONS**

DOOR SCHEDULE & DOOR TYPE ELEVATIONS

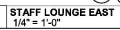
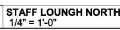
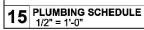
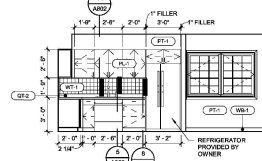
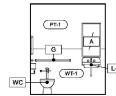
A600

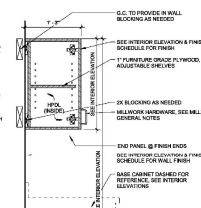


 PLUMBING FIXTURE TAG

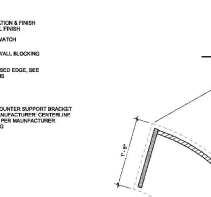
 FINISH TAG

RESTROOM ACCESSORIES SCHEDULE				
	DESCRIPTION	MANUFACTURER	MODEL	NOTES
A	ADA WALL MIRROR	BOBBIK	9-200	24"X 36" WELDED FRAME MIRROR
B	WALL MIRROR	BOBBIK	9-200	24"X 36" WELDED FRAME MIRROR
C	SOAP DISPENSER	BOBBIK	5-211	MANGAL WALL MOUNTED
D	PAPER TOWEL DISPENSER	BOBBIK	3-1563	RECESSED
E	TOILET PAPER DISPENSER	BOBBIK	9-0057	SURFACE MOUNTED; SATIN FINISH
F	42" GRAB BAR	BOBBIK	9-6005-00	42" LENGTH; SATIN PRESSED FINISH
G	36" GRAB BAR	BOBBIK	9-6005-00	36" LENGTH; SATIN PRESSED FINISH
H	18" VERTICAL GRAB BAR	BOBBIK	9-6005-00	18" LENGTH; SATIN PRESSED FINISH
I	CALL FOR RFP			EXISTING CALL FOR RFP TO BE REBID; RELOCATED AS REQUIRED

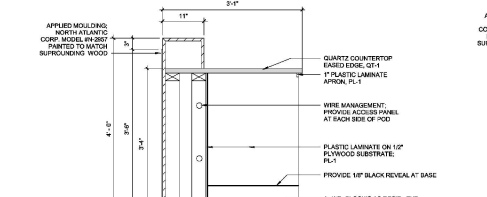
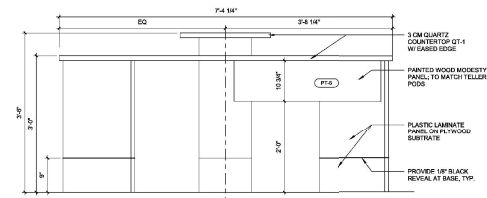
**A701**



⑧ SECTION
1" = 1'-0"



13 SECTION

[illegible]

① TELLER POD DETAIL 1